



coerco

Grease Arrestor

Installation, Operation
& Maintenance Manual



Grease Arrestor

Product Installation, Operation and Maintenance Manual



Introduction

Coerco engineer a range of Polyethylene Grease Arrestors to suit any above or below ground application that have all been rigorously tested to meet Water Corporation Guidelines and Australian Standard and approved by Department of Health for installation throughout W.A., S.A. and N.T.

Their durable lightweight design makes them convenient to transport which is ideal for local and remote destinations alike. Coerco Grease Arrestors are designed to provide many years of trouble-free service by following these installation guidelines. Sizing is a critical aspect to ensure efficiency, therefore, tanks should be sized by either calculating the fixture unit ratings or peak flow rates. Refer to your local Water Authority for further details.

WESTERN AUSTRALIA



Water Corporation - Trade Waste (Ph: 13 13 95)

<https://www.watercorporation.com.au/Help-and-advice/Trade-waste/Retail-food-businesses/Grease-arrestor-maintenance/Grease-arrestor-sizing>

SOUTH AUSTRALIA



SA Water - Trade Waste (Ph: 1300-729-283)

Email: tradewaste@sawater.com.au

NORTHERN TERRITORY



Power and Water Corporation - Trade Waste (Ph: 1800-245-092)

Email: tradewastedept.pwc@powerwater.com.au

Grease Arrestor

Product Installation, Operation and Maintenance Manual



Installation Instructions

These instructions must be read in conjunction with local council, government authorities and relevant standards applicable to this installation and should be performed by suitably qualified personnel.

Grease Arrestors discharging to the Ministers Sewer must have a Trade Waste Application submitted and approved by the local Water Authority prior to installation.



Handling

- Tank should only be moved when empty by using the lifting points located at the top of the tank.
- Conformance plate is located at the base of the internal manhole riser and can be found by removing the inlet cover.
- Data Plate is moulded into the tank directly above the inlet pipe.
- Care should be taken when placing or moving tanks on hard/abrasive surfaces.
- Visual Inspection for any damage during transport should be conducted prior to installation.
- Identification plate and serial no. is located on top of the tank, adjacent to the inlet side and should be recorded at the tail of this manual for future reference.



Excavation

- Ensure excavated hole is free of all services – Dial Before You Dig 'www.1100.com.au'.
- Observe all local and statutory requirements related to excavations (eg. Benching/battering/shoring/dewatering/barriers and warning signs).
- The installer shall take all reasonable precautions to ensure the tank is not within the zone of influence of nearby existing structures, such as retaining walls, residential dwellings, commercial buildings, trafficable areas, and the like. In such circumstances, advice from a suitably qualified person should be obtained.
- Measure the distance from the base of the tank while sitting on flat ground to the inlet pipe invert level (effective depth).
- Excavate a suitably sized hole and allow for a 100mm clean and level compacted base of sand, cracker dust, or crushed limestone up to 6mm, beneath the base of the tank.
- **Note:** Maximum cover allowed over the tank is equal to the top of the riser on each model as shown in diagram. Non-compliance will void warranty.

Grease Arrestor

Product Installation, Operation and Maintenance Manual



Installation Instructions (continued)



Above Ground Installation

- Grease Arrestors must be installed on a level concrete slab no less than 100mm thick.
- Install 20mm galvanized steel pins through the support leg holes and fix to the concrete base with suitable fixings eg. Dynabolt, Ankascrew.
- Ensure there is vertical clearance above the grease arrester, greater than the maximum depth of the grease arrester, but not less than 1m.
- Manhole riser should be cut to a suitable height for the application.
- Remove factory fitted screw lid and seal the underside of the Manhole Adaptor, to the riser with Sikaflex Stick & Seal, Selleys N Mastic, or similar product.
- Fix Manhole Adaptor from the inside with minimum of 4 x Stainless Steel Screws. Refit screw lid and ensure a gas tight seal.
- Provision should be made for a platform and access steps, manufactured to Australian Standard AS-1657 for safe access to inspect and maintain.
- Provide adequate protection to prevent unauthorized access or damage to Grease arrester (eg. Enclosure, cage, or bollards etc.).
- The grease arrester is manufactured from UV stabilized polyethylene with a UV resistance value of UV20 as per AS4766. However, consideration shall be given to install the apparatus out of direct sunlight to maximise efficiency.
- Grease Arrestors located in internal areas shall meet ventilation requirements as specified in AS5215:2022.
- Above ground Grease Arrestors shall have provision to contain the entire operating volume in the case of a spill.

Grease Arrestor

Product Installation, Operation and Maintenance Manual



Installation Instructions (continued)

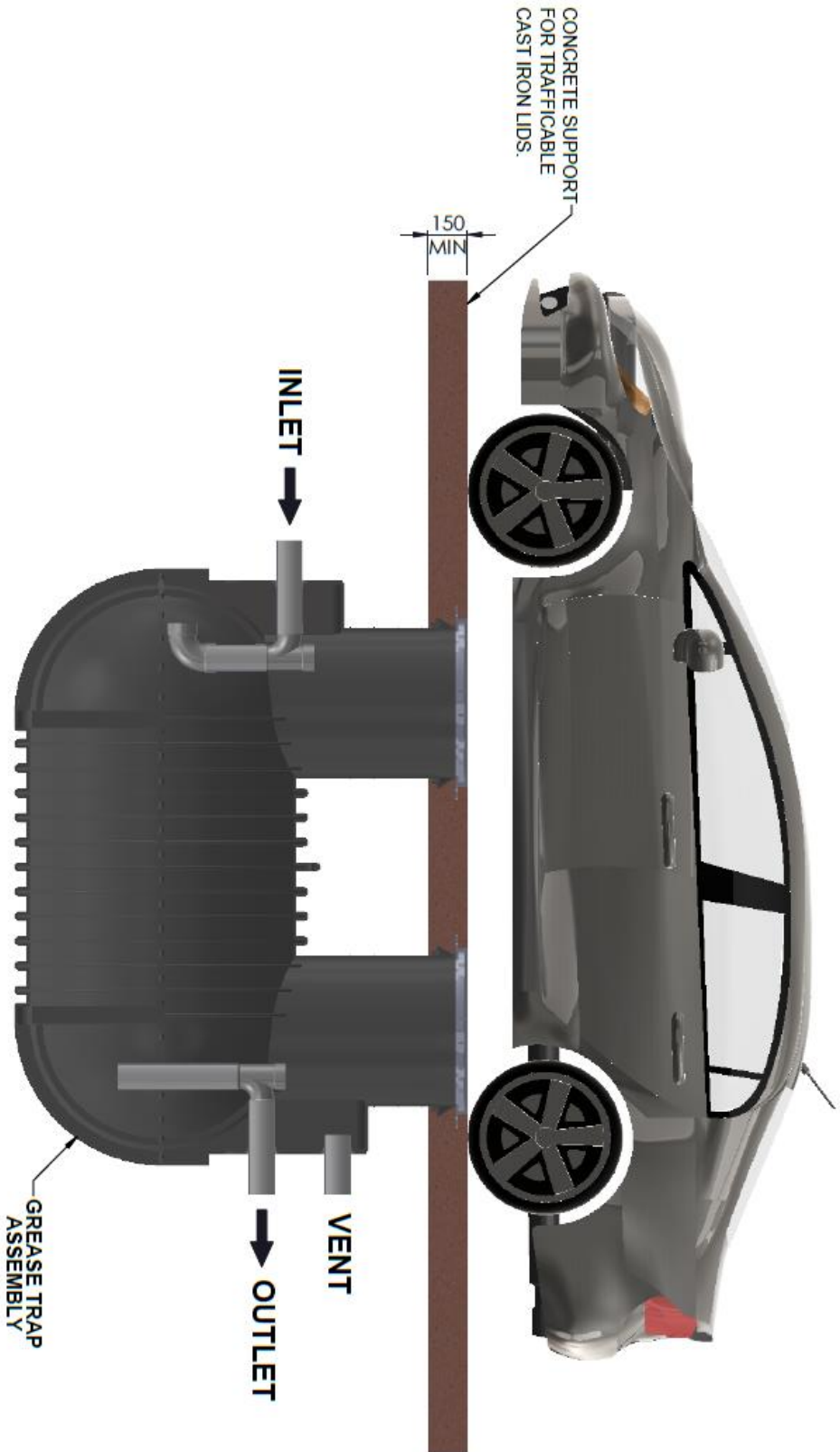


Below Ground Installation

- For non-trafficable areas, poly screw-lids can be installed as detailed in the Above Ground methodology above, must comply with AS3996:2019 and must be contained within a secure compound to prevent unauthorized access.
- Grease Arrestor manhole risers fitted to the tank can be cut to suit the application and should be at a height to ensure adequate stormwater drainage away from the unit.
- Seal the underside of the Manhole Adaptor, to the tank riser with Sikaflex Stick & Seal, Selleys N Mastic, or similar product.
- Fix Manhole Adaptor to the tank riser from the inside with minimum of 4 x Stainless Steel Screws and ensure a gas tight seal.
- Prepare a Butyl Mastic sealing bead on top of the Manhole Adaptor and fit the trafficable cover directly to the manhole adaptor and ensure a gas tight seal.
- Gatic style cast iron or composite lids must be installed into a self-supporting 150mm concrete slab with no direct weight transfer applied to the Grease Arrestor. Consult the manufacturer or design engineer for further details. For trafficable areas tanks should be fitted with Gatic style cast iron or composite access lids that comply with AS3996-2006 Table 3.1 (refer below). Furthermore, Gatic style cast iron or composite access lids must be keyed into a self-supporting concrete slab, that complies with AS5215:2022 Section 7.2. Under no circumstances should any additional force be applied to the Grease Arrestor. Please consult the manufacturer or design engineer for further details.

Trafficable Areas

NOTE:
FOR ILLUSTRATION PURPOSES ONLY.
NOT TRUE TO SCALE



**TITLE: GREASE ARRESTOR TYPICAL
INSTALLATION WITH TRAFFICABLE CAST
IRON LIDS.**



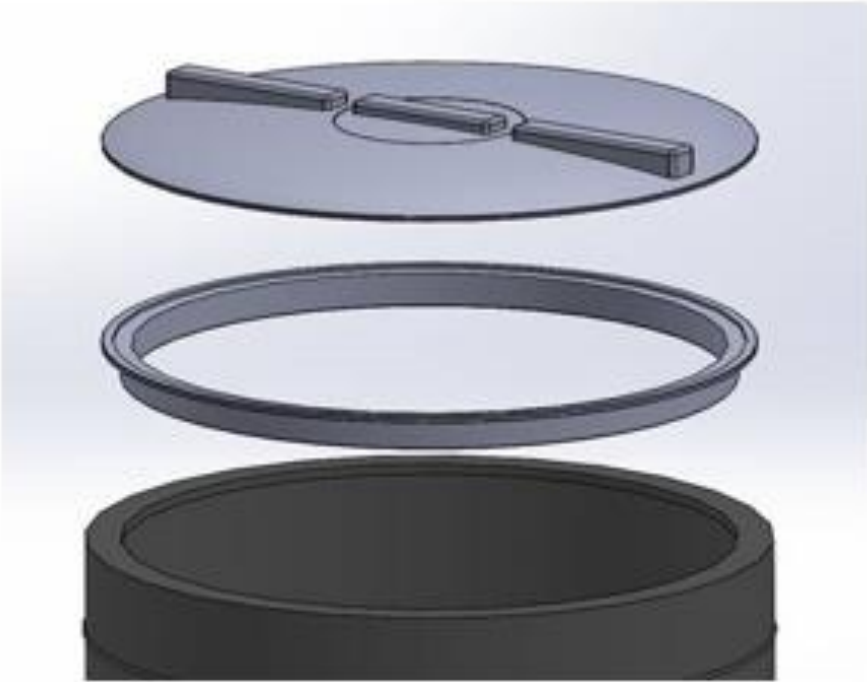
DATE	26JUL2022	MATERIAL	-
PRODUCT	GREASE TRAP ASSEMBLY	SURFACE FINISH	-
PRODUCT CODE	GA2000	WALL THICKNESS	-
TITLE	CONCEPT PLAN	SCALE	NTS

REVISIONS			
REV	BY	DATE	DESCRIPTION
A	GT	26JUL2022	CHANGE VENT POSITION

SHEET 1 OF 1	CHKD	
	APP'D	
A3	SHEET SIZE	

© THIS DRAWING IS THE COPYRIGHT OF COERCIO. IT CANNOT BE COPIED IN PART OR FULL WITHOUT THE WRITTEN PERMISSION OF COERCIO

Trafficable Areas



Above ground poly screw lid

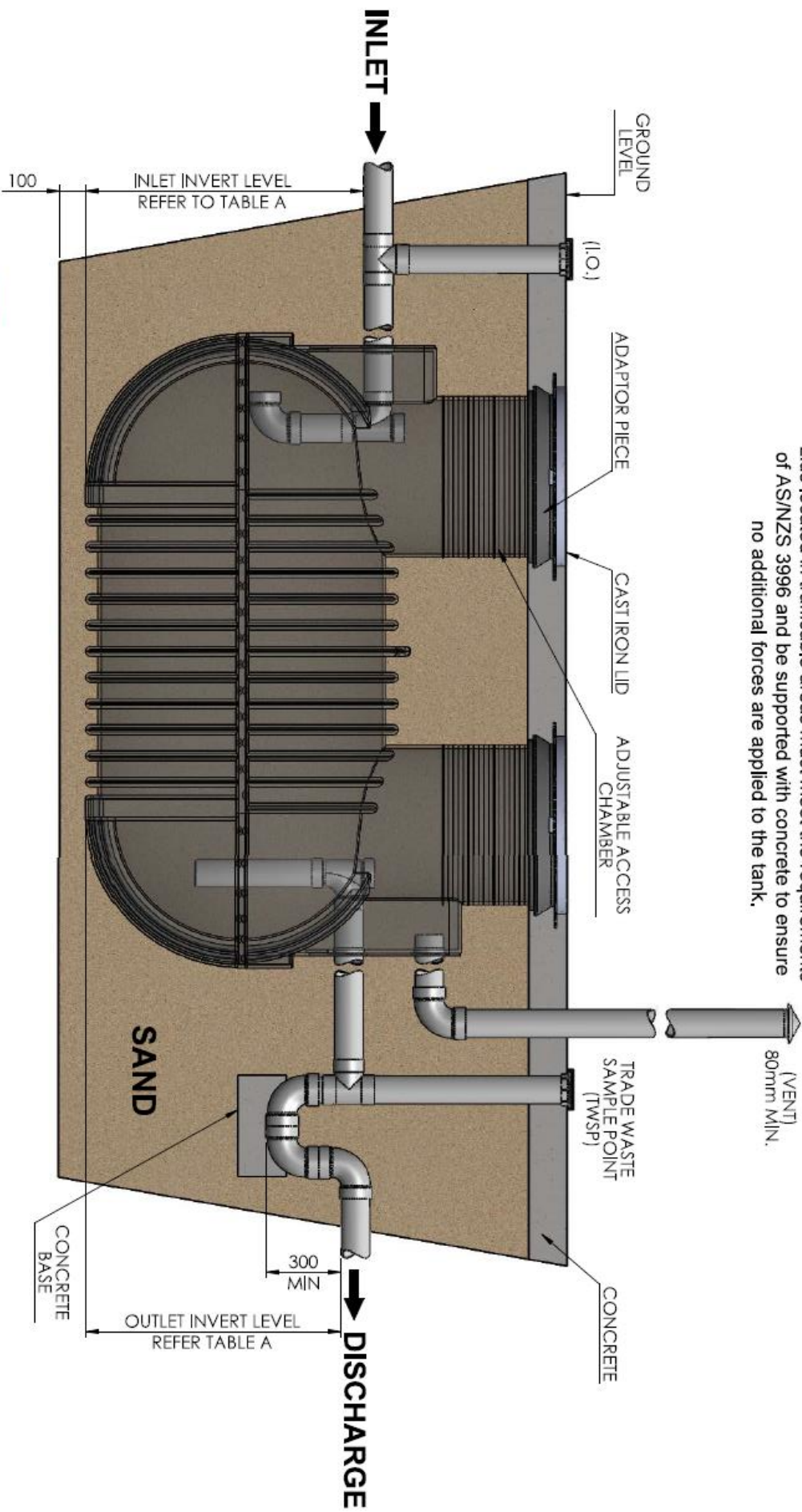


Below ground trafficable cover

For Western Australian Installations

Typical Grease Arrestor Layout Below Ground

This document must be read in conjunction with Water Corporation Plans HX33-10-00, HX33-11-30 and HX33-10-10. Lids located in trafficable areas must meet the requirements of AS/NZS 3996 and be supported with concrete to ensure no additional forces are applied to the tank.



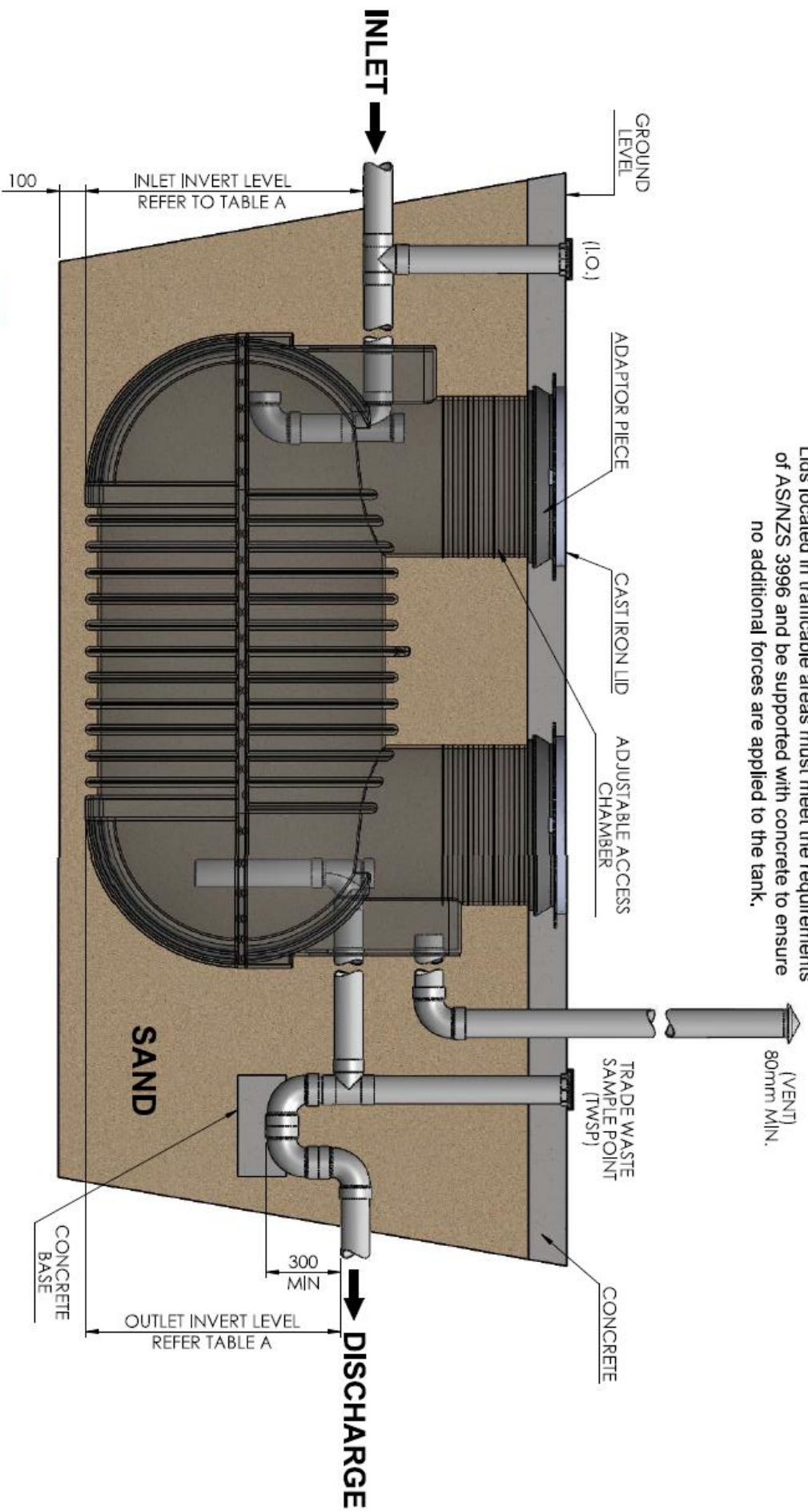
DATE	05/07/2022	MATERIAL	-	REVISIONS		INITIAL RELEASE		SHEET 1 OF 1	
PRODUCT	WEST AUSTRALIA GREASE ARRESTOR	SURFACE FINISH	-	0	MI	05/07/2022	CHKD	CHKD	
PRODUCT CODE	GA2000	WALL THICKNESS	-				APVD	APVD	
DRAWING No	C-GA2000-WA-001	SCALE	NTS				SHEET	SHEET	
© THIS DRAWING IS THE COPYRIGHT OF COERCO. IT CANNOT BE COPIED IN PART OR FULL WITHOUT THE WRITTEN PERMISSION OF COERCO								A3	SIZE

1 2 3 4 5 6

For Western Australian Installations

Typical Grease Arrestor Layout Below Ground

This document must be read in conjunction with Water Corporation Plans HX33-10-00, HX33-11-30 and HX33-10-10. Lids located in trafficable areas must meet the requirements of AS/NZS 3996 and be supported with concrete to ensure no additional forces are applied to the tank.

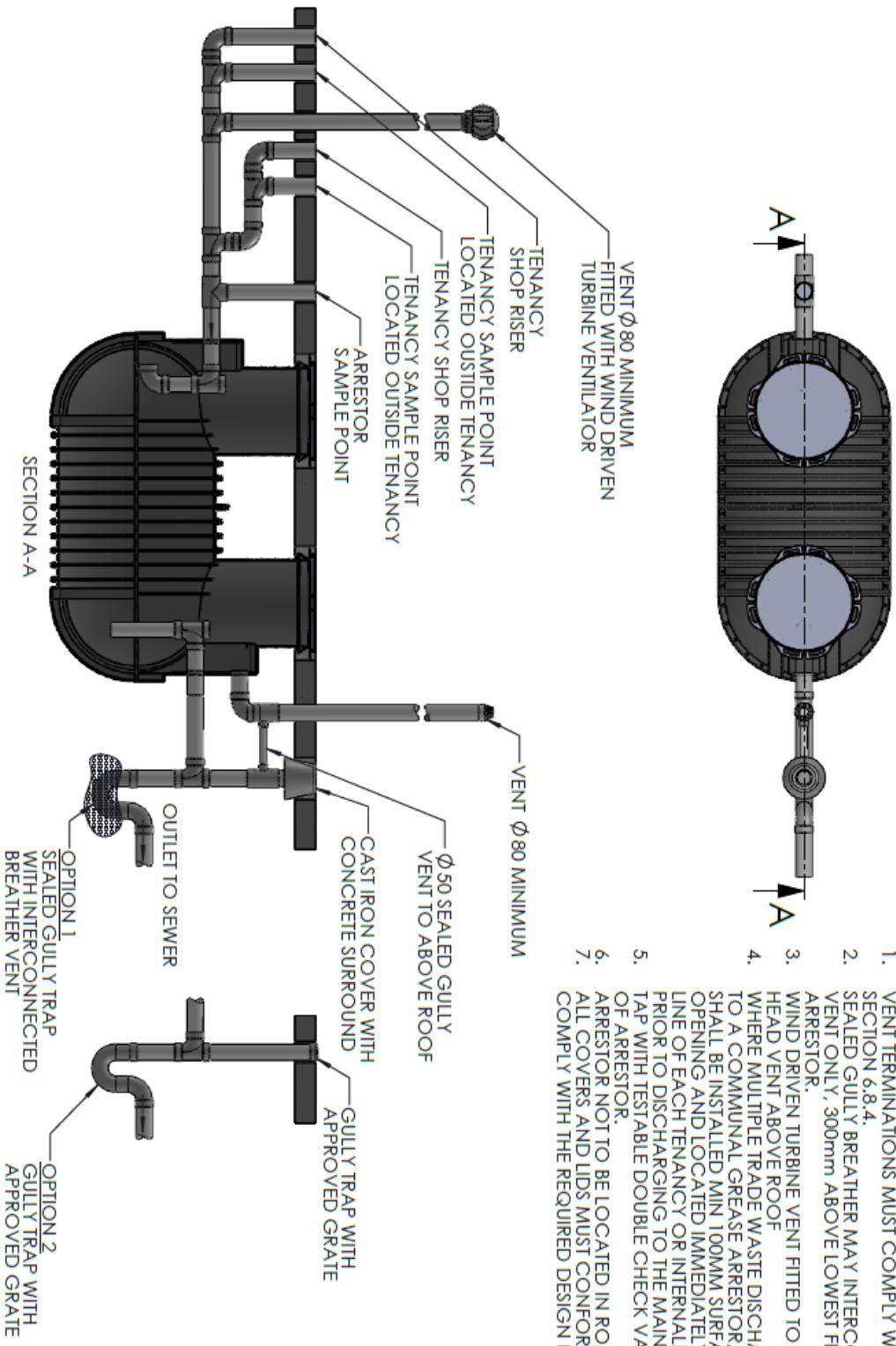


DATE	05/07/2022	MATERIAL	-	REVISIONS		INITIAL RELEASE		SHEET 1 OF 1
PRODUCT	WEST AUSTRALIA GREASE ARRESTOR	SURFACE FINISH	-	0	MI	05/07/2022	CHKD	CHKD
PRODUCT CODE	GA2000	WALL THICKNESS	-				APVD	APVD
DRAWING No	C-GA2000-WA-001	SCALE	NTS				SHEET	SHEET
© THIS DRAWING IS THE COPYRIGHT OF COERCO. IT CANNOT BE COPIED IN PART OR FULL WITHOUT THE WRITTEN PERMISSION OF COERCO								A3
								SIZE

1 2 3 4 5 6

For South Australian Installations

FIGURE 1: BELOW GROUND TRADE WASTE GREASE ARRESTOR DETAIL



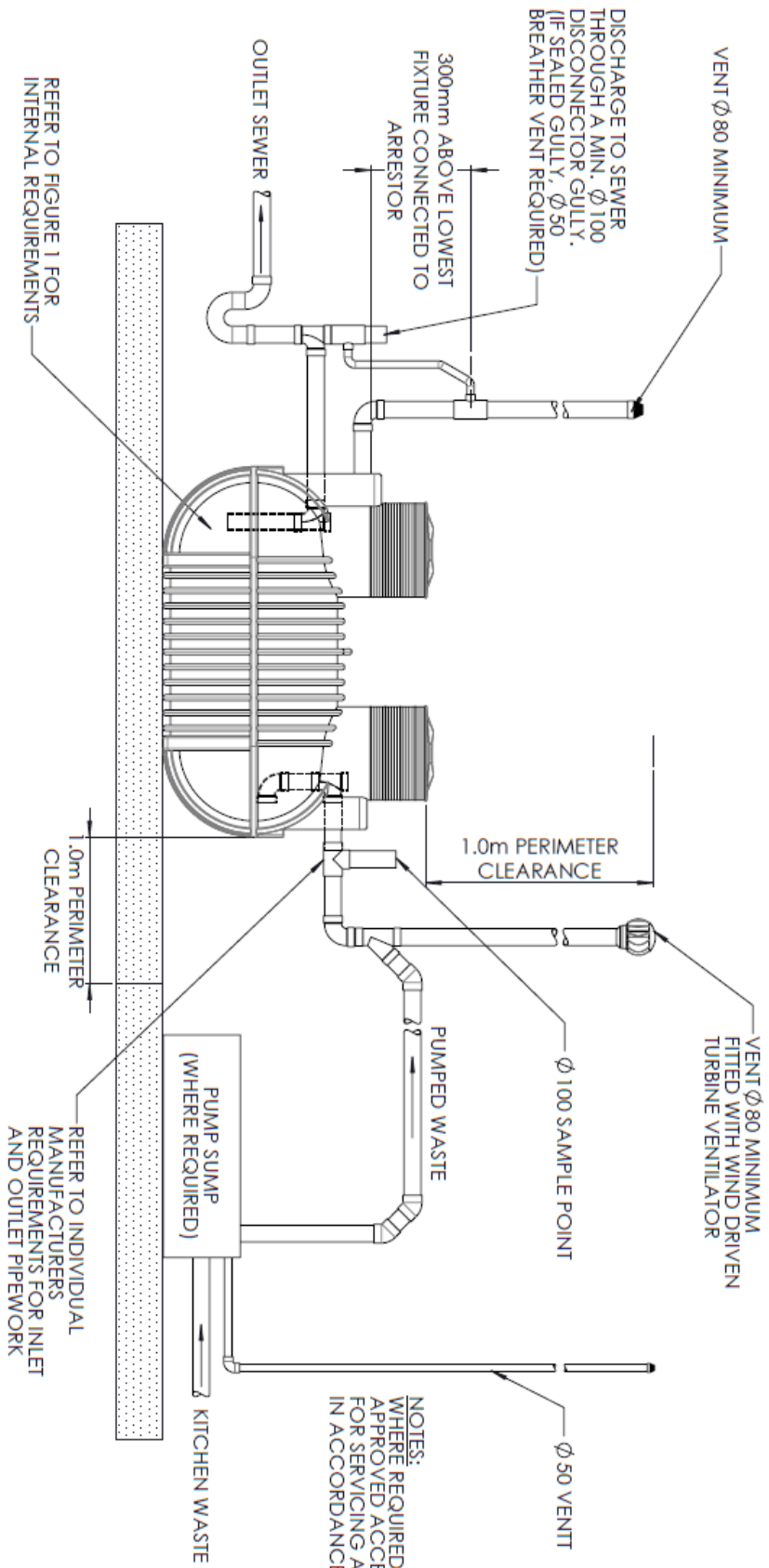
- NOTES:
1. VENT TERMINATIONS MUST COMPLY WITH AS/NZS 3500.2:2015 SECTION 6.8.4.
 2. SEALED GULLY BREATHER MAY INTERCONNECT WITH INDUCT VENT ONLY, 300mm ABOVE LOWEST FIXTURE CONNECTED TO ARRESTOR.
 3. WIND DRIVEN TURBINE VENT FITTED TO UPSTREAM TRADE WASTE HEAD VENT ABOVE ROOF
 4. WHERE MULTIPLE TRADE WASTE DISCHARGES ARE CONNECTED TO A COMMUNAL GREASE ARRESTOR, A SAMPLING POINT OPENING AND LOCATED IMMEDIATELY OUTSIDE THE BUILDING LINE OF EACH TENANCY OR INTERNALLY AT EACH TENANCY, PRIOR TO DISCHARGING TO THE MAIN DRAIN.
 5. TAP WITH TESTABLE DOUBLE CHECK VALVE REQUIRED WITHIN 5m OF ARRESTOR.
 6. ARRESTOR NOT TO BE LOCATED IN ROADWAYS.
 7. ALL COVERS AND LIDS MUST CONFORM WITH AS3996-2006 AND COMPLY WITH THE REQUIRED DESIGN LOADING.

DATE	26/07/2022	MATERIAL				SHEET 1 OF 2
PRODUCT	SOUTH AUSTRALIA GREASE ARRESTOR	SURFACE FINISH				CHD
PRODUCT CODE	GA2000	WALL THICKNESS				APVD
DRAWING No	C-GA2000-SA-001	SCALE				SHEET SIZE
© THIS DRAWING IS THE COPYRIGHT OF COERCO. IT CANNOT BE COPIED IN PART OR FULL WITHOUT THE WRITTEN PERMISSION OF COERCO		NTS				A3



For South Australian Installations

FIGURE 2: TYPICAL GREASE ARRESTOR INSTALLATION ABOVE GROUND PUMPED DISCHARGE




- NOTES:**
1. VENT TERMINATIONS MUST COMPLY WITH AS/NZS 3500.2:2015 SECTION 6.8.4.
 2. SEALED GULLY BREATHER MAY INTERCONNECT WITH INDUCT VENT ONLY.
 3. 300mm ABOVE LOWEST FIXTURE CONNECTED TO ARRESTOR.
 3. INDUCT AND UPSTREAM VENTS CANNOT BE INTERCONNECTED

NOTES:
WHERE REQUIRED PROVIDE APPROVED ACCESS PLATFORM FOR SERVICING AND INSPECTION IN ACCORDANCE AS1657-2013.

REFER TO FIGURE 1 FOR INTERNAL REQUIREMENTS

REFER TO INDIVIDUAL MANUFACTURERS REQUIREMENTS FOR INLET AND OUTLET PIPEWORK

 coerco <small>Engineered Product Solutions</small>		DATE 26/07/2022		MATERIAL SURFACE FINISH -		VISIONS		SHEET 2 OF 2	
PRODUCT SOUTH AUSTRALIA GREASE ARRESTOR		PRODUCT CODE GA2000A		WALL THICKNESS -		01		CHND	
DRAWING No C-GA2000-SA-002		SCALE NTS		NTS		MI 26/07/2022		APVD	
© THIS DRAWING IS THE COPYRIGHT OF COERCO. IT CANNOT BE COPIED IN PART OR FULL WITHOUT THE WRITTEN PERMISSION OF COERCO		ISSUED FOR CONSTRUCTION		DESCRIPTION		DATE		SHEET SIZE A3	

Grease Arrestor

Product Installation, Operation and Maintenance Manual



Table A

Model	Capacity (L)	Install Type 1	Length 2 (mm)	Width 2 (mm)	Height 3 (mm)	Pipe Size (mm)	Inlet Height 4 (mm)	Outlet Height 4 (mm)	Max. Grease Storage Depth (mm)	Max. Solids Storage Depth (mm)	Sizing	WAWC Approval No.
GA1200	1267lt	Both	2500	1000	1595	100	910	810	119	231	1.05lt/s 9 F.U.	AN-093-02
GA2000	1861lt	Both	2498	1224	1768	100	1110	1010	153	277	1.55lt/s 16 F.U.	AN-093-01
GA4000	4210lt	Both	2500	1800	2445	100	1570	1570	240	416	3.50lt/s 85 F.U.	AN-093-03

1: Above or Below Ground 2: External 3: Including Manhole Riser 4: From tank base

Table 3.1 Load Classifications of Covers and Grates

Class	Typical Use	Normal wheel loading kg	Serviceability design load kN	Ultimate limit state design load kN
A	Areas (including footways) accessible only to pedestrians and pedal cyclists and closed to other traffic (extra-light duty)	330	6.7	10
B	Areas (including footways and light tractor paths) accessible to vehicles (excluding commercial vehicles) or livestock (light duty)	2 670	53	80
C	Malls and areas open to slow moving commercial vehicles (medium duty)	5 000	100	150
D	Carriageways of roads and areas open to commercial vehicles (heavy duty)	8 000	140	210
E	General docks and aircraft pavements (extra heavy duty - E)	13 700	267	400
F	Docks and aircraft pavements subject to high wheel loads (extra heavy duty - F)	20 000	400	600
G	Docks and aircraft pavements subject to very high wheels loads (extra heavy duty - G)	30 000	600	900

NOTES

- Nominal wheel loads are given for guidance only. Consideration should be given to the type, size and pneumatic pressure of the load applied.
- Class B design loads exceed AS 5100.2 requirements for footway loading
- Class D design loads exceed AS 5100.2 requirements for a W80 wheel load.
- Class C units are based on an intermediate load.
- The serviceability load is set at 2/3 of the ultimate limit state design load.
- A force of 1kN approximately equal to the weight of 100 kg.

Grease Arrestor

Product Installation, Operation and Maintenance Manual



Placement of Tank

- Utilising the molded lifting points, place the tank on the completed 100mm clean and level compacted sand pad
- Ensure tank is true and level with adequate drain fall.
- Your installation should be installed as approved by the relevant authority to meet all applicable standards and guidelines.
- Connect Plumbing pipework to AS/NZS 3500 regulations.
- All Grease Arrestors require venting to atmosphere in accordance with AS/NZS 3500 and must be read in conjunction with
- **Western Australia** - Water Corp. <https://www.watercorporation.com.au/Help-and-advice/Trade-waste/Retail-food-businesses/Grease-arrestor-maintenance/Grease-arrestor-installation-guidelines> and Plan HX33-10-00 and PLB Technical Note "Venting in Trade Waste Applications"
- All Grease Arrestors require installation of a Trade Waste Sample Point (TWSP) immediately downstream of the outlet, as per guidelines contained in Water Corp Plan HX33-11-30 and HX33-10-10 for sealed TWSP's.
- **South Australia** – S.A. Water Basic pre-treatment devices – Design, Installation and Accessibility notes 18/12/18.
- Adjust risers to suit application, as detailed above.
- Secure Manhole Adaptor with Stainless Steel fasteners and cover all tank openings to prevent dirt ingress during backfilling.
- In areas of potential high water tables, concrete ground anchors should be provided at the base of the hole tied in with 20mm rebar installed to the four legs via the anchor points provided. Contact Coerco Engineering Department for further details and calculations.
- Fill tank with water prior to backfilling.



Backfilling

- Backfill and foundation material should consist of clean permeable sand, cracker dust or crushed limestone. Clay is not permitted.
- Place fill slowly and evenly from all sides, to ensure there are no voids.
- Backfill around the tank shall be placed evenly in compacted layers, no greater than 300mm.
- Only handheld vibrating plate compactors (Jumping Jack/Rammer) may be used in the compaction process.
- Soil pressures based on a backfill/subgrade material must have a minimum density of 18kN/m³ and a maximum of 20kN/m³.
- Backfill material is to be compacted around the perimeter of the tank to a 98% modified dry density + 2% for optimum moisture content.
- Divert stormwater/runoff from the tank location through use of bunds or diversion drains.

Grease Arrestor

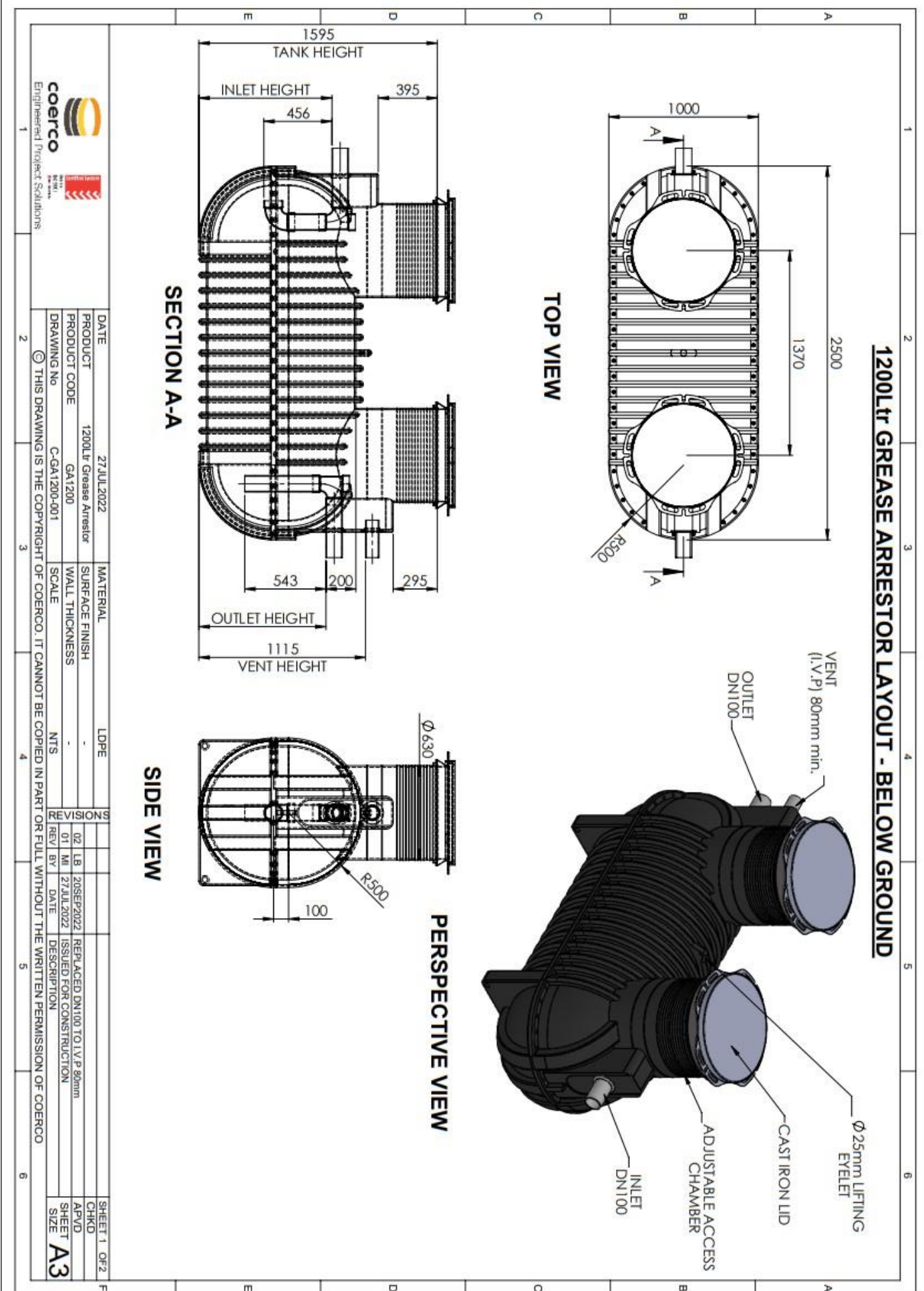
Product Installation, Operation and Maintenance Manual



Completion and Maintenance Instructions

- Your installation must be inspected by the relevant authority, which should be arranged at a suitable time prior to usage.
- A Certificate of Compliance must be provided to the PLB on commencement/completion of the installation.
- A Trade Waste application should be submitted to the local Water Authority prior to any discharge from the apparatus.
- The local Water Authority must be notified within fourteen (14) days upon installation of the Grease Arrestor.
- A maintenance schedule agreement will be determined by the local Water Authority based on wastewater loads, with a suitably licensed contractor utilized for cleaning/maintenance to the schedule.
- Clear access must be maintained at all times.
- A water tap with an appropriate backflow prevention device must be located within 5m of the arrestor pit for maintenance purposes.
- No use of emulsifying agents upstream of apparatus is permitted.

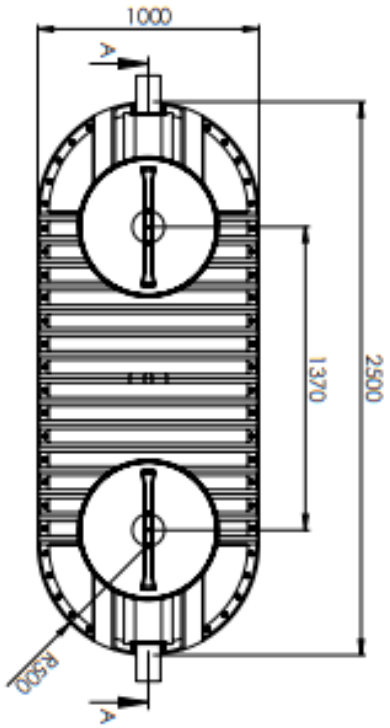
GA1200



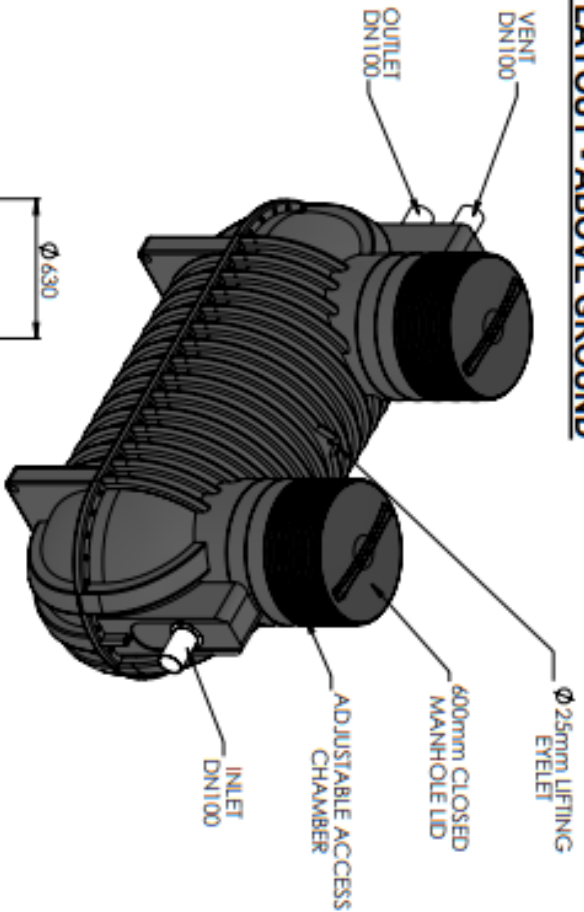
DATE	27 JUL 2022	MATERIAL	LDPE	
PRODUCT	1200Ltr Grease Arrestor	SURFACE FINISH	-	
PRODUCT CODE	GA1200	WALL THICKNESS	-	
DRAWING No	C-GA1200-001	SCALE	NTS	
© THIS DRAWING IS THE COPYRIGHT OF COERCO. IT CANNOT BE COPIED IN PART OR FULL WITHOUT THE WRITTEN PERMISSION OF COERCO		REVISIONS		
		02 LB	20SEP2022	REPLACED DN100 TO I.V.P 80mm
		01 MI	27JUL2022	ISSUED FOR CONSTRUCTION
				DESCRIPTION
				SIZE

SHEET 1 OF 2
CHKD
APVD
SHEET
SIZE
A3

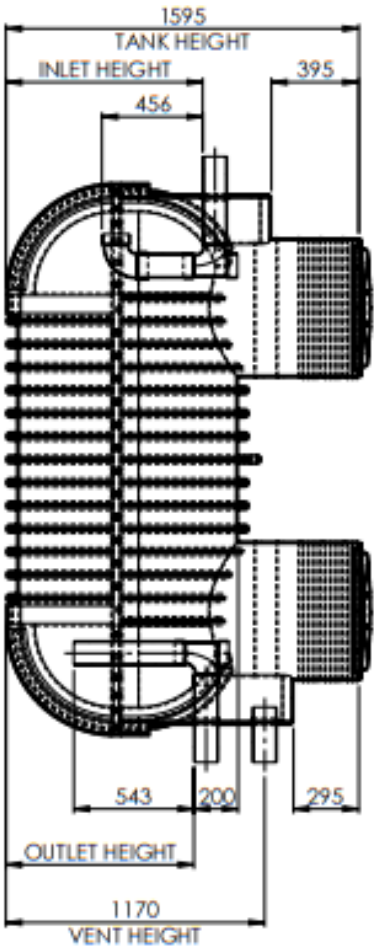
1200Ltr GREASE ARRESTOR LAYOUT - ABOVE GROUND



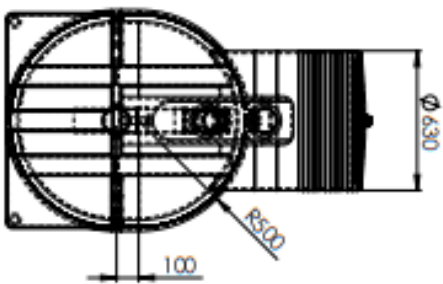
TOP VIEW



ISOMETRIC VIEW



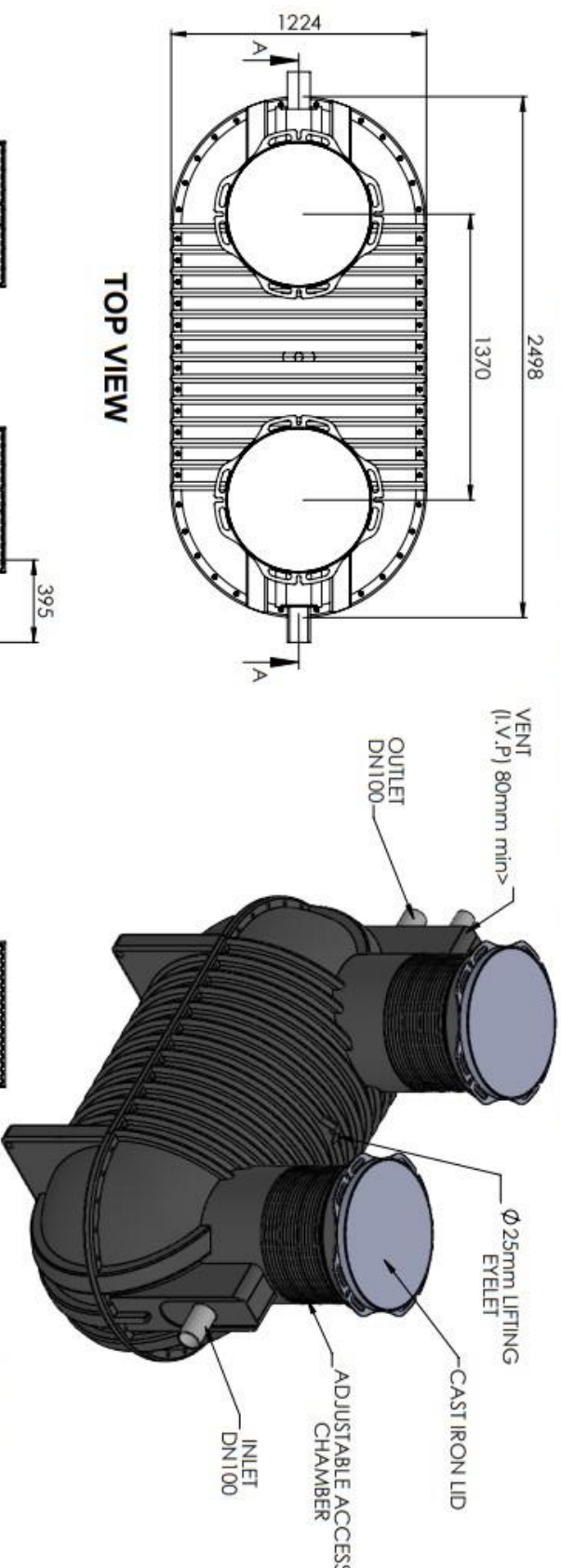
SECTION A-A



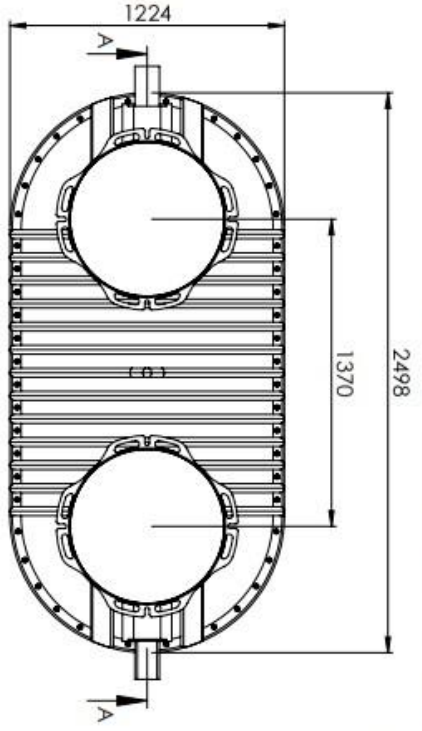
SIDE VIEW

REV 01 ISSUED FOR CONSTRUCTION DW:CHIK/APP DATE 27/07/22		MATERIAL LDPE		DRAWN MI	
DESCRIPTION 1200LTR GREASE ARRESTOR		FINISH S.G.		CHK APP	
DATE 27/07/22		SCALE NTS		STOCK CODE GA1200A	
COERSCO L:01-00000 Project 1504/005 23 Harris Rd, Malaga Western Australia 6000		PHONE 1800 646 277 E-mail: info@coerco.com.au		PRODUCT 1200LTR GREASE ARRESTOR	
GENERAL ARRANGEMENT DRAWING		SHEET 1 OF 1		SCALE 1:1	

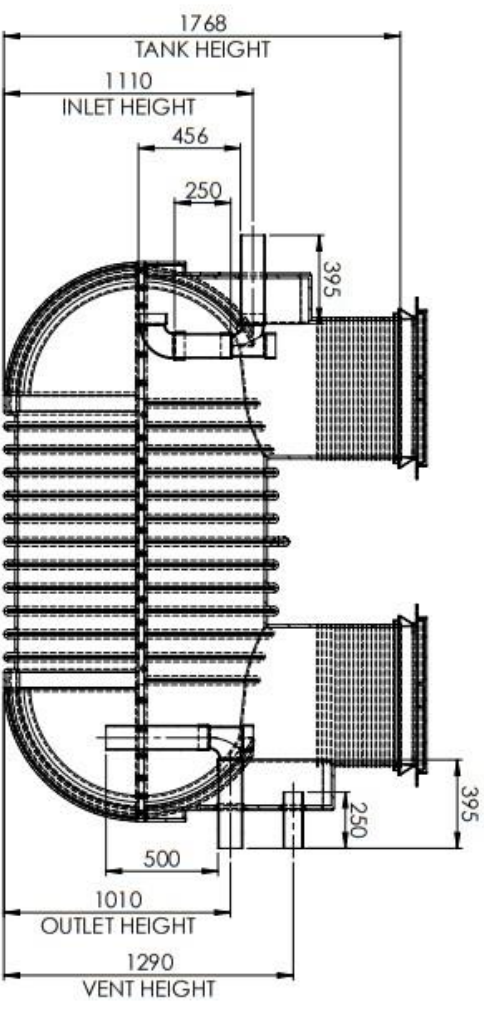
2000Ltr GREASE ARRESTOR LAYOUT - BELOW GROUND



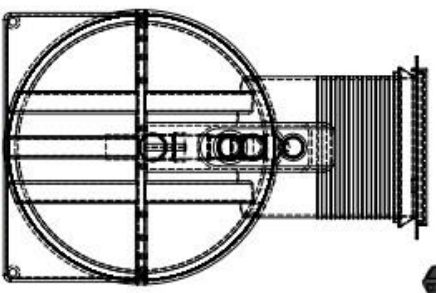
TOP VIEW



SECTION A-A



SIDE VIEW

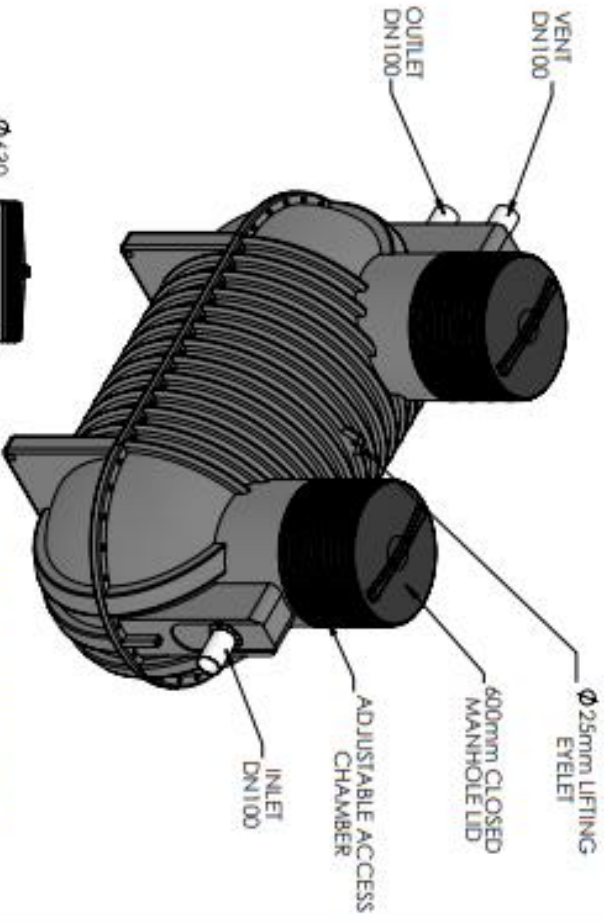
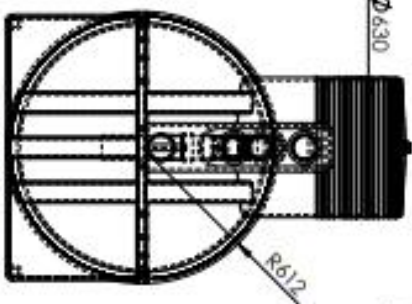
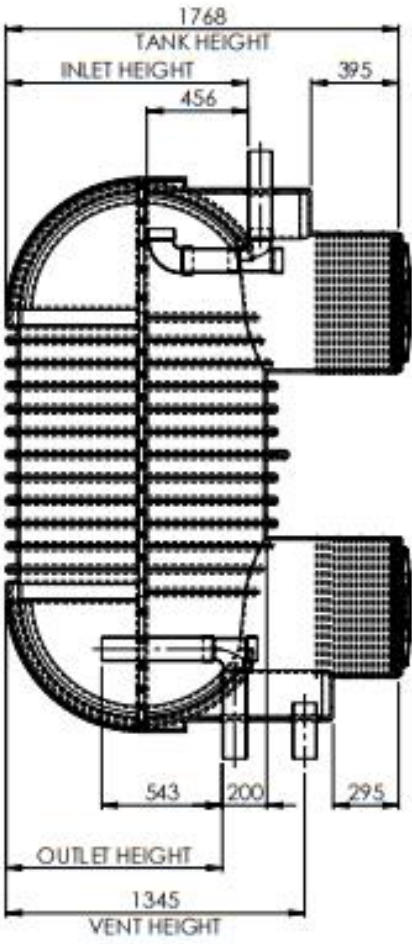
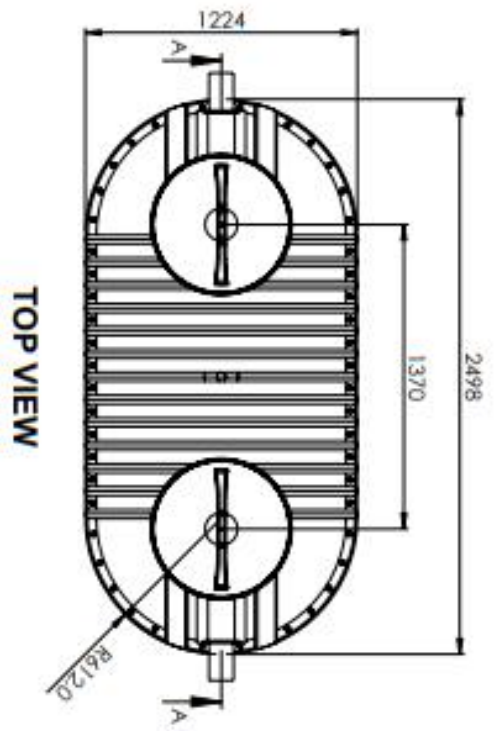


PERSPECTIVE VIEW

REV A ISSUED FOR APPROVAL DESCRIPTION DWGCHK/APP DATE		LB MI TK WC 30.09.22 16.09.22		MATERIAL AS SPECIFIED SURFACE FINISH MIN. WALL THICKNESS mm		TITLE GA2000 2000Ltr GREASE ARRESTOR PRODUCTION DRAWING	
B REPLACE DN100 TO I.V.P 80mm min, ADJUST OUTLET HEIGHT				DWG MI MI TK WC APP WC SCALE: NTS		SHEET 1 OF 1 DWGNO. GA2000 REV. A	
PROHIBIT ANY use of this document nor its contents may be used or reproduced in any manner without the written authorisation of COERCO unless otherwise noted. All dimensions are in millimetres.				COERCO L'ingegneri Proprietà Soluzioni		Phone: 1800 646 277 E-mail: info@coerco.com.au	

GA2000

2000Ltr GREASE ARRESTOR LAYOUT - ABOVE GROUND



SECTION A-A

SIDE VIEW

ISOMETRIC VIEW

REV	DESCRIPTION	DW/CHK/APP	DATE	COERCIO 23 Harris Rd, Malaga Western Australia, 8000 L-01-10-0001 Ingotek Solutions	MATERIAL	LDPE	DWNL	LB	STOCK CODE	GA2000A
01	ISSUED FOR CONSTRUCTION	ML	25/07/22		COLOR/ FINISH		CHK		PRODUCT	2000LTR GREASE ARRESTOR
					S.G.		APP		GENERAL ARRANGEMENT DRAWING	
							SCALE: NTS			

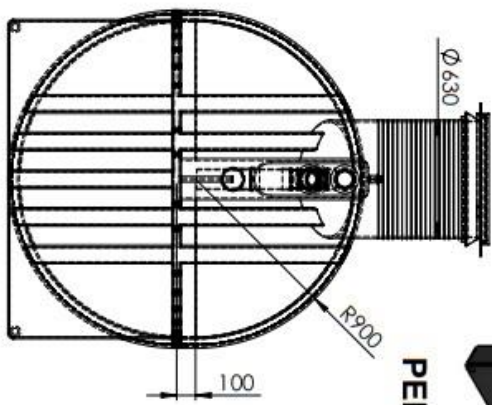
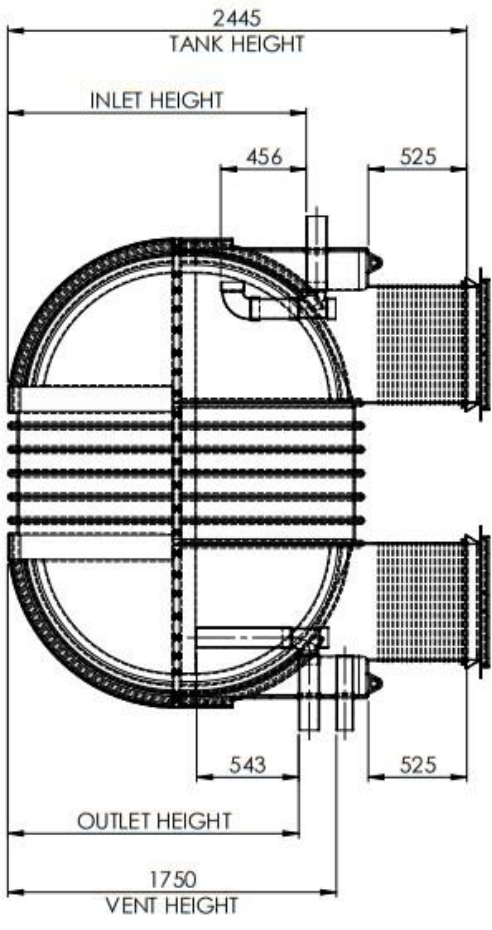
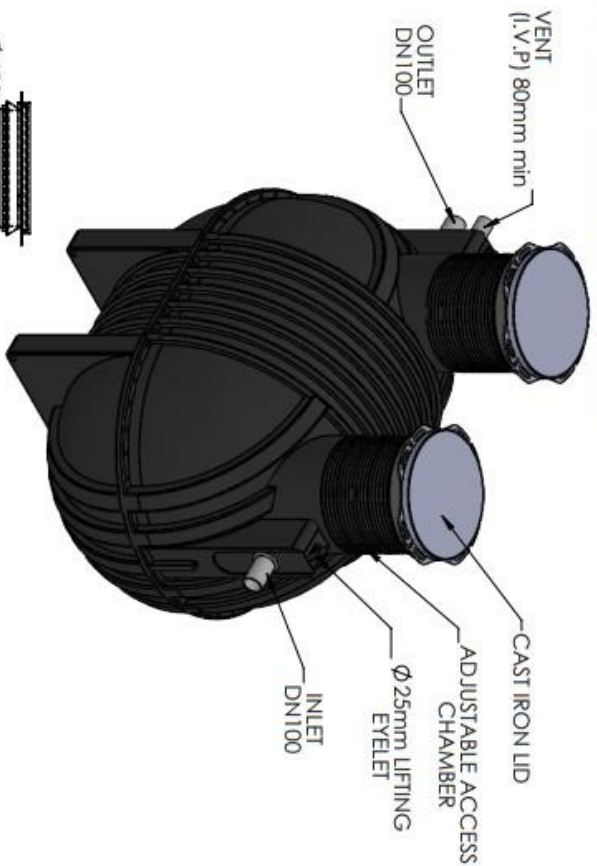
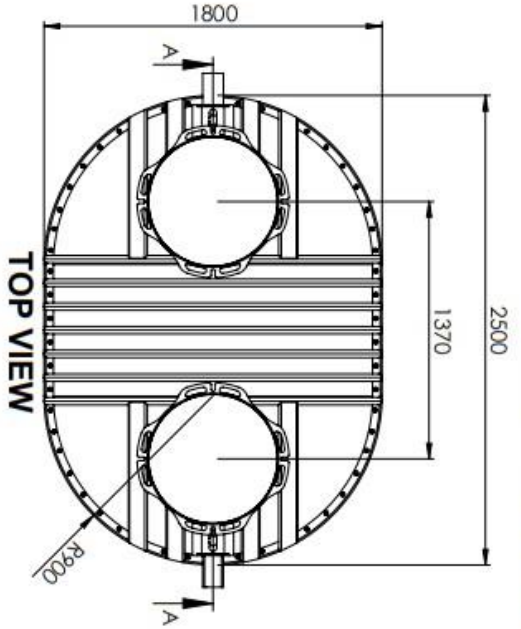
PROBES/STAMP: Number this document not its contents may be used or reproduced
 All rights reserved without the written authorisation of COERCIO
 All other documents used are the property of their respective owners and are not to be reproduced.

Phone: 1800 648 277
 E-mail: info@coercio.com.au

SHEET 1 OF 1
 SHEET NO: C-GA2000A-001

GA4000

4000Ltr GREASE ARRESTOR LAYOUT - BELOW GROUND



SECTION A-A

SIDE VIEW

PERSPECTIVE VIEW



DATE	27JUL2022	MATERIAL	LDPE
PRODUCT	4000Ltr Grease Arrester	SURFACE FINISH	-
PRODUCT CODE	GA4000	WALL THICKNESS	-
DRAWING No	C-GA4000-001	SCALE	NTS

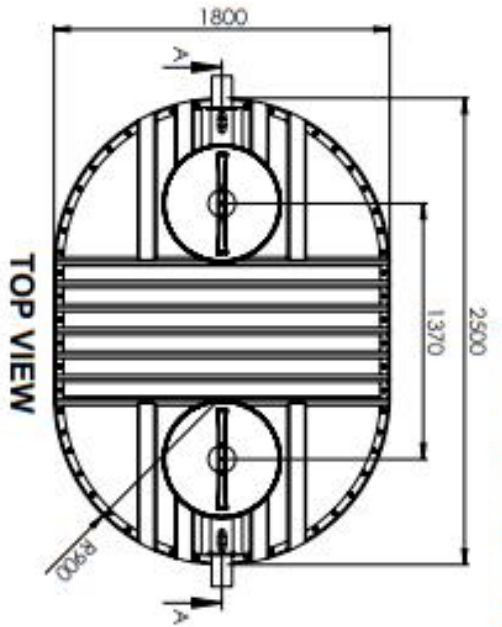
REVISIONS	REV	BY	DATE	DESCRIPTION
01	LB		20SEP2022	REPLACED DN100 TO I.V.P 80mm
01	ML		27JUL2022	ISSUED FOR CONSTRUCTION

SHEET 1 OF 2	CHKD	APVD
SHEET		
SIZE	A3	

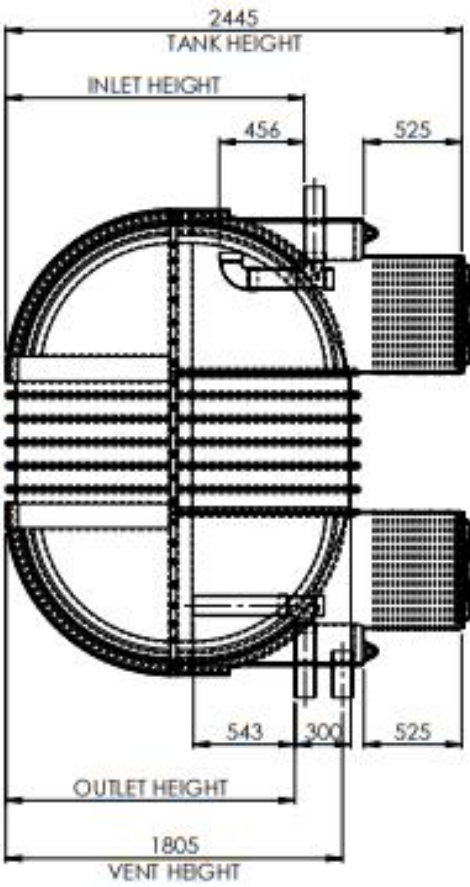
THIS DRAWING IS THE COPYRIGHT OF COERCO. IT CANNOT BE COPIED IN PART OR FULL WITHOUT THE WRITTEN PERMISSION OF COERCO

GA4000

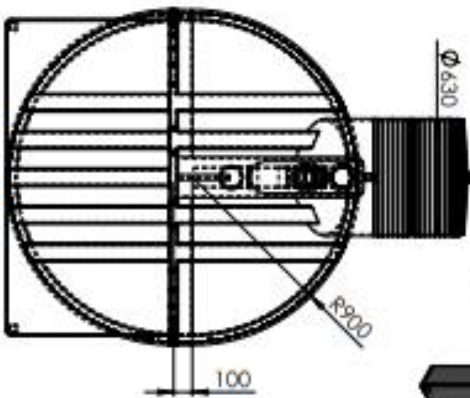
4000Ltr GREASE ARRESTOR LAYOUT - ABOVE GROUND



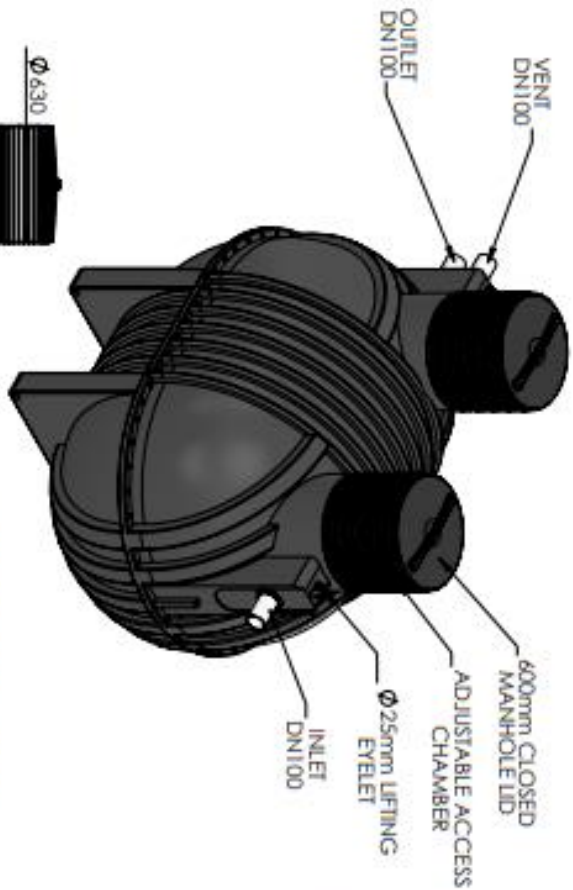
TOP VIEW



SECTION A-A



SIDE VIEW



ISOMETRIC VIEW

PROBES/STAMP NUMBER THE DOCUMENT NOT BE COPIED FOR BE USED OR REPRODUCED ANY REVISIONS WILL BE NOTIFIED BY THE PROJECT MANAGER ALL DIMENSIONS UNLESS OTHERWISE SPECIFIED ARE IN MILLIMETERS				COERCIO L-101100000 PROJECT HEADQUARTERS 23 Harris Rd, Malaga Western Australia 6000 Phone: 1800 648 277 E-mail: info@coercio.com.au	
REV 01 ISSUED FOR CONSTRUCTION	DESCRIPTION MI	DW/CHK/APP MI	DATE 25/07/22	MATERIAL COLOUR/FINISH S.G.	LDPE DW/ MI CHK/ APP SCALE: NTS
STOCK CODE GA4000A		PRODUCT 4000LTR GREASE ARRESTOR			
SHEET 1 OF 1		GENERAL ARRANGEMENT DRAWING			
SHEET 1 OF 1		C-GA4000A-001			

Grease Arrestor

Product Installation, Operation and
Maintenance Manual



Australian Consumer Law and Consumer Warranty

- Coerco warrants all our Grease Arrestors against defects in materials and workmanship for a period of 5 years from the date of purchase.
- Coerco handles returns and process refunds in accordance with the Australian Consumer Law.
- Should you wish to return your order, you must contact us within fourteen (14) calendar days of delivery to report any discrepancies or faults.
- You are entitled to return a faulty Product. You may choose a refund or exchange if a Product has a major fault. If the fault is minor, Coerco may elect to give you a free repair instead of a replacement or refund.
- Returns or refunds are made in our discretion subject to any guarantees that cannot be excluded under the Australian Consumer Law.

Owner Details

Name			
Installation Address			Postcode
Phone		Email	
Serial Numbers			
Date of Purchase			

Installer Details

Name/Company			
Address			Postcode
Phone		Email	

Contact Us

We are always happy to receive feedback about our products and services so call one of our friendly staff if you require any further information about any of our products and services.

Mail:
Coerco
P.O. Box 319
Dalwallinu W.A. 6609.

Freecall:
1800-491-756

Email:
info@coerco.com.au

