

Corrugated Industrial Tanks

Industrial Process Tanks



Features of Corrugated Industrial Tank

- Specific Gravities from 1.2SG - 2SG
- Operating temperatures from -18°C up to +50°C
- Multiple types of polyethylene available
- One piece construction with self supporting roof
- Corrugated for traditional appearance
- UV stabilised to withstand our harsh climate
- Durable and impact resistant polyethylene for long life
- Manufactured with guidance from Australian Standards
- Available in all of our colour range (Refer to page 14)

Corrugated Industrial Tank Specification

Code	Capacity (Litres)	Diameter (mm)	Inlet Height (mm)	Total Height (mm)	Available SG
IT1000	1,000	1000	1495	1550	1.2 -2.0
IT2500	2,500	1400	1900	2050	1.2 -2.0
IT2500S	2,500	1850	1070	1250	1.2 -2.0
IT4500	4,500	1850	1950	2100	1.2 -2.0
IT4500S	4,500	2420	1200	1350	1.2 -2.0
IT9000	9,000	2420	2255	2430	1.2 -2.0
IT9000S	9,000	2950	1560	1825	1.2 -2.0
IT9500	9,500	2600	1915	2150	1.2 -2.0
IT13500	13,500	2950	2075	2325	1.2 -2.0
IT22500	22,500	3550	2550	2825	1.2 -2.0
IT32000	32,000	3925	2740	3000	1.2 -1.3

Please note tank sizes may vary between States and Territories in Australia.

Flat Walled Industrial Tanks

Industrial Process Tanks



Features of Flat Walled Industrial Tank

- Specific Gravities from 1.2SG - 2SG
- Operating temperatures from -18°C up to +50°C
- Multiple types of polyethylene available
- One piece construction with self supporting roof
- Flat-walled design combines strength with a sleek, modern finish
- UV stabilised to withstand our harsh climate
- Durable and impact resistant polyethylene for long life
- Manufactured in guidance with Australian Standards
- Available in all of our colour range (Refer to page 14)

Flat Walled Industrial Tank Specifications

Code	Capacity (Litres)	Diameter (mm)	Inlet Height (mm)	Total Height (mm)	Available SG
IT5300	5,300	1800	2275	2275	1.2 -2.0
IT10500	10,500	2450	2445	2450	1.2 -2.0
IT14000	14,000	2475	3080	3200	1.2 -2.0
IT25000	25,000	3825	2535	2555	1.2 -2.0
IT50000	50,000	4575	3285	3400	1.2 -2.0

Please note tank sizes may vary between States and Territories in Australia.

Conical Based Process Tank Systems

Industrial Process Tanks



Features

- Complete drainage thanks to a cone-based design making our tanks ideal for mixing or batching liquid solutions, dosing of bio diesel and also pre-mixing of liquid or granular chemicals.
- Available with custom fittings, pipework and agitators. These units can be designed to meet any requirements.
- Available as standard in sizes ranging from 5,000 to 27,000 litres; bespoke sizes may be designed to meet your needs.
- Common uses include chemical mixing/ agitation, bio-diesel processing, trace element mixing.



Cone Based Process Tanks

Code	Description
ITCB5000GT	5,000 Litre Industrial Process Cone Base Storage Tank - With Weir
ITCB5000RT	5,000 Litre Industrial Process Cone Base Storage Tank - Closed Roof Top
ITCB9000GT	9,000 Litre Industrial Process Cone Base Storage Tank - With Weir
ITCB9000RT	9,000 Litre Industrial Process Cone Base Storage Tank - Closed Roof Top
ITCB16500RT	16,500 Litre Industrial Process Cone Base Storage Tank - Closed Roof Top
ITCB27000FT	27,000 Litre Industrial Process Cone Base Storage Tank - Flat Top
ITCB27000RT	27,000 Litre Industrial Process Cone Base Storage Tank - Closed Roof Top

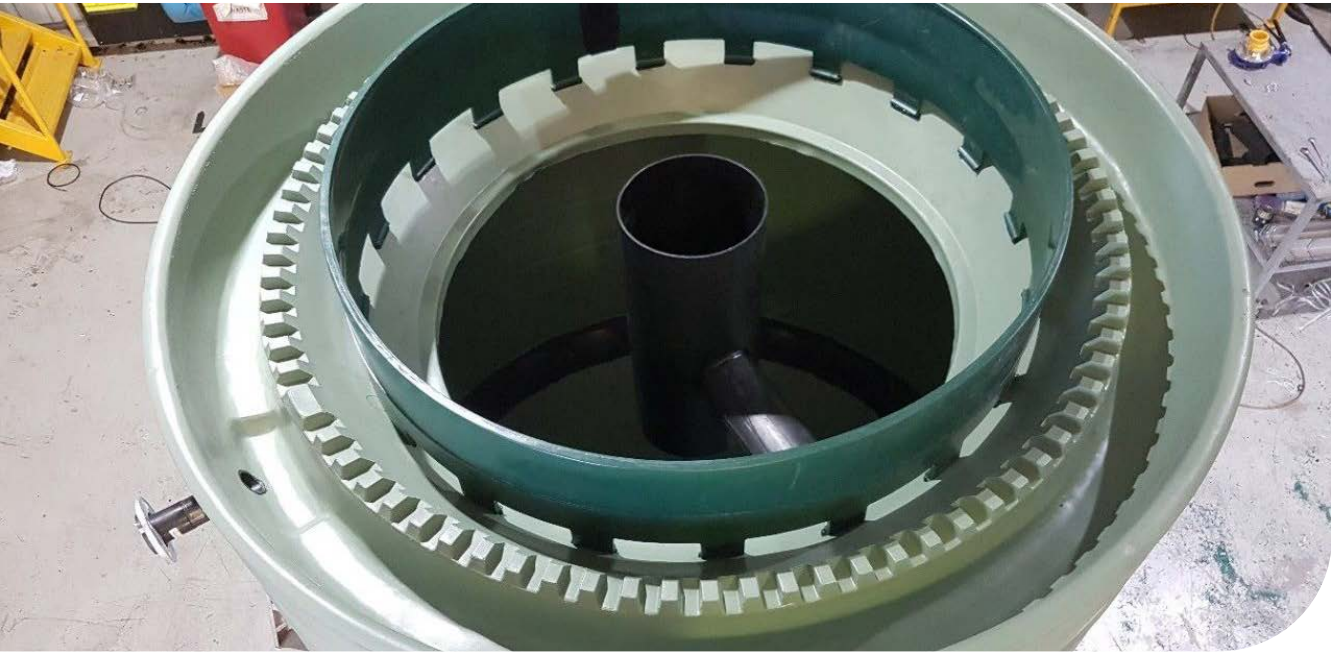
Please note tank sizes may vary between States and Territories in Australia

Cone Based Process Tank Stands

Code	Description
ITCB5000S-G	Stand To Suit 5,000L Conical Tank - On Ground - Hot Dipped Galvanised Steel
ITCB5000S-R	Stand To Suit 5,000L Conical Tank - Raised - Hot Dipped Galvanised Steel
ITCB9000S-G	Stand To Suit 9,000L Conical Tank - On Ground - Hot Dipped Galvanised Steel
ITCB9000S-R	Stand To Suit 9,000L Conical Tank - Raised - Hot Dipped Galvanised Steel
ITCB16500S-R	Stand To Suit 16,500L Conical Tank - Raised - Galvanised Steel
ITCB27000S-R	Stand To Suit 27,000L Conical Tank - Raised - Galvanised Steel

Clarifiers

Industrial Process Tanks



Features

- Manufactured from durable polyethylene
- Chemical and UV resistant
- Cone base allows complete drainage
- Ideal for waste water treatment. Includes inlet, outlet and internal pipework
- Custom modifications to suit your requirements

Industrial Process Clarifier Tanks

Code	Description
ITCC5000	5,000 Litre Industrial Process Clarifier Tank - Including Overflow Weir, Internal DN300 Centre Pipe And Support Structure
ITCC9000	9,000 Litre Industrial Process Clarifier Tank - Including Overflow Weir, Internal DN300 Centre Pipe And Support Structure
ITCC27000	27,000 Litre Industrial Process Clarifier Tank - Including Overflow Weir, Internal DN300 Centre Pipe And Support Structure

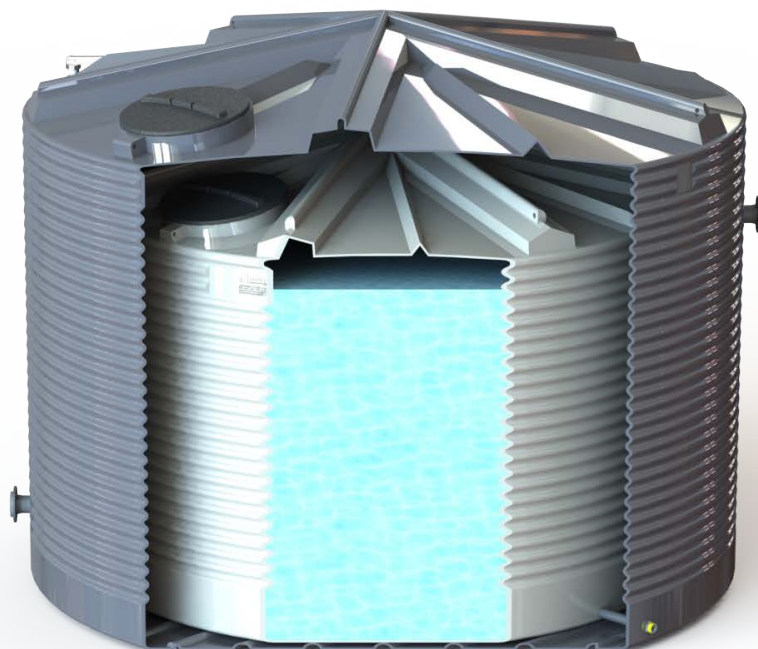
***Tanks are suitable for mediums up to SG1.2. Contact us for mediums of higher densities.**

Industrial Process Clarifier Tank Stands

Code	Description
ITCB5000S-G	Stand To Suit 5000L Conical Tank - On Ground - Hot Dipped Galvanised Steel
ITCB5000S-R	Stand To Suit 5000L Conical Tank - Raised - Hot Dipped Galvanised Steel
ITCB9000S-G	Stand To Suit 9000L Conical Tank - On Ground - Hot Dipped Galvanised Steel
ITCB9000S-R	Stand To Suit 9000L Conical Tank - Raised - Hot Dipped Galvanised Steel
ITCB27000S-R	Stand To Suit 27000L Conical Tank - Raised - Galvanised Steel

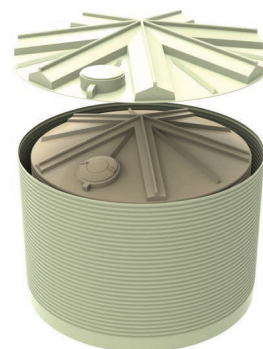
Self Bunded Chemical Tanks

Industrial Process Tanks



Features

- Inner and outer skins both manufactured from durable, light weight, hexene polyethylene
- UV resistant suitable for our harsh climate conditions
- Chemical and impact resistant
- Large range of sizes available
- Designed to suit any project or requirement
- Available in all colourbond colours
- Manufactured with guidance from Australian Standards



Bunded Tanks

Code	Description
ITBT5000	5,000 Litre (1,110 Gallon) Self Bunded Chemical Tank
ITBT8000	8,000 Litre (1,760 Gallon) Self Bunded Chemical Tank
ITBT13500	13,500 Litre (3,000 Gallon) Self Bunded Chemical Tank
ITBT22500	22,500 Litre (5,000 Gallon) Self Bunded Chemical Tank
ITBT32000	32,000 Litre (7,000 Gallon) Self Bunded Chemical Tank

Insulated Tanks

Industrial Process Tanks



Features

- Tough hexene polyethylene construction coated with spray on polyurethane foam
- One-piece construction ensures no weak spots
- UV stabilised to withstand the harsh Australian climate
- Manufactured in accordance with Australian Standards
- Chemical and impact resistant, suitable for a wide range of applications
- Comes with a range of fitting and accessory options to suit your requirements



Container Tank Systems

Code	Description
IT-FM1000	Insulation of 1,000L Storage Tank - 50mm Foam
IT-FM2500	Insulation of 2,500L Storage Tank - 50mm Foam
IT-FM2500S	Insulation of 2,500L Squat Storage Tank - 50mm Foam
IT-FM4500	Insulation of 4,500L Storage Tank - 50mm Foam
IT-FM4500S	Insulation of 4,500L Squat Storage Tank - 50mm Foam
IT-FM5300	Insulation of 5,300L Storage Tank - 50mm Foam
IT-FM9000	Insulation of 9,000L Storage Tank - 50mm Foam
IT-FM9000S	Insulation of 9,000L Squat Storage Tank - 50mm Foam
IT-FM9500	Insulation of 9,500L Storage Tank - 50mm Foam
IT-FM10500	Insulation of 10,500L Storage Tank - 50mm Foam
IT-FM13500	Insulation of 13,500L Storage Tank - 50mm Foam
IT-FM14000	Insulation of 14,000L Storage Tank - 50mm Foam
IT-FM22500	Insulation of 22,500L Storage Tank - 50mm Foam
IT-FM25000	Insulation of 25,000L Storage Tank - 50mm Foam
IT-FM32000	Insulation of 32,000L Storage Tank - 50mm Foam
IT-FM50000	Insulation of 50,000L Storage Tank - 50mm Foam

Available in the following colours:



White



Beige



Smooth Cream

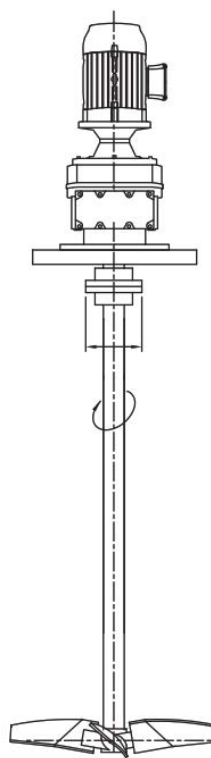
Agitator Tanks

Industrial Process Tanks



Features

- Tanks ranging from 1,000litre to 50,000litre
- Tough hexene polyethylene construction
- One-piece construction ensures no weak spots
- UV stabilised to withstand the harsh Australian climate
- Agitator options available for processing a wide variety of viscosities and applications
- Manufactured in accordance with Australian Standards
- Engineered support stands and overhead frames available
- Chemical and impact resistant, suitable for a wide range of applications
- Wide range of fitting and accessory options to suit your requirements
- Available with personal access platforms fully compliant to Australian Standards



To ensure you are getting the correct mixer, you need to know the following details;

- Product being agitated/mixed
- Specific Gravity of the product (liquid and solid)
- Voltage of motor required

All mixers/agitator recommendations are made based on the information provided.

Container Tank Systems

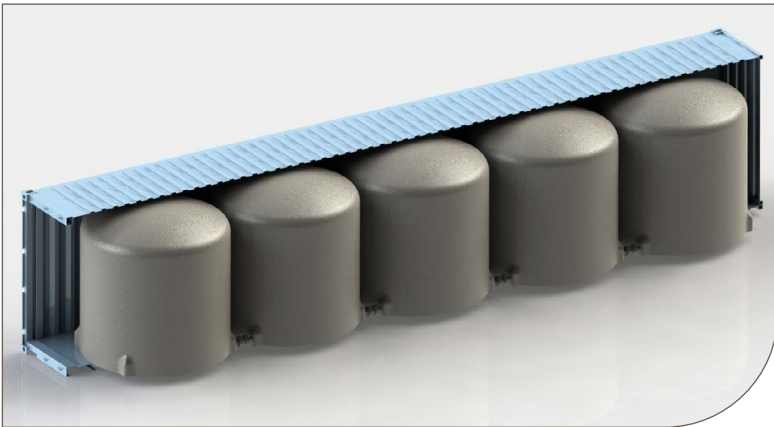
Industrial Process Tanks



Container Tank Systems	
Code	Description
CMT20-20	20,000 Litre Modular Container Tank System
CMT50-40	50,000 Litre Modular Container Tank System

Features

- Available in capacities to suit 20 foot and 40 foot sea containers
- Durable polyethylene tanks means no rust
- 10,000 litres per unit
- Tank units fastened securely for safe transport
- Packaged unit conforms to international shipping and transport dimensional requirements for easy logistics
- Suitable for short or long term water storage in remote areas



Underground Storage Tanks

Industrial Process Tanks



URT4000



URT7000



URT11000



URT15000



URT19000



URT23000



URT27000



URT31000

Product images are a close guide only and may not represent actual product

Features

- Underground design offers greater flexibility
- Engineered and manufactured in accordance with Australian Standards
- UV stabilised to withstand the harsh Australian climate
- Made using the best linear low-density food grade polyethylene
- Available in a wide range of sizes to suit all applications
- Sealed lid for additional safety
- Unbeatable quality and value for money
- A wide range of riser options available for access

Underground Tank Range

Code	Description
URT4000	4,000 Litre (880 Gallon) Underground Tank incl. 455mm Lid
URT7000	7,000 Litre (1,600 Gallon) Underground Tank incl. 455mm Lid
URT11000	11,000 Litre (2,500 Gallon) Underground Tank incl. 455mm Lid
URT15000	15,000 Litre (3,300 Gallon) Underground Tank incl. 455mm Lid
URT19000	19,000 Litre (4,200 Gallon) Underground Tank incl. 455mm Lid
URT23000	23,000 Litre (5,100 Gallon) Underground Tank incl. 455mm Lid
URT27000	27,000 Litre (6,000 Gallon) Underground Tank incl. 455mm Lid
URT31000	31,000 Litre (7,000 Gallon) Underground Tank incl. 455mm Lid

Coerco Industrial Process Tanks

Coerco poly water tanks are designed and manufactured under strict controls to ensure suitability for drinking quality and UV stabilised in all colours to withstand the harsh Australian climate. Our tanks are manufactured using the best linear low density food grade polyethylene and in guidance with the following standards:

- AS/NZS 4766(INT) polyethylene storage tanks for water and chemicals
- AS/NZS 4020 Australian Standards for drinking water
- AS 2070 Part 1 and Part 8 Australian Standards for food contact

Standard Tank Colours



Optional COLORBOND® colours are available but may be subject to surcharge and/or delivery delay. Due to printing differences, some colours may vary. COLORBOND® and colour names are registered trademarks of Blue Scope Steel Ltd. ™Colour names are trademarks of Blue Scope Steel Ltd. Coerco colours represented match COLORBOND® steel colours.



All tanks are rotationally moulded and tested to ensure walls are the thickest at the base where water pressure is greatest

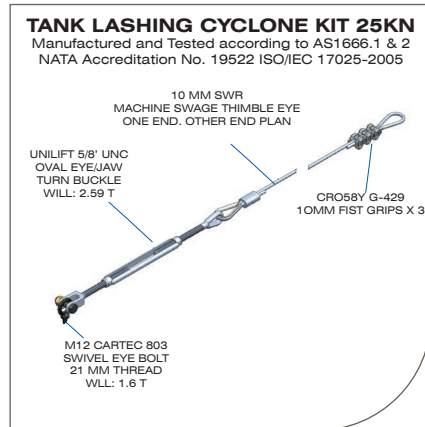


An important feature of Coerco tanks is its **one piece construction**. The roof and walls are moulded as one with no joins seams or parts lines down the walls. At no stage is the roof cut off and screwed back on.



Tank Modifications and Accessories

Industrial Process Tanks



Tank Tie Down Kit

Features

- Secure your tank easily to anchor points
- Provides peace of mind for high wind areas
- Available as certified for cyclonic conditions

Tank Tie Down Kits

Code	Description
TTK-01	Tank tie down kit - not certified for cyclonic regions
TTK-02	Tank tie down kit - includes three x lashings rated for cyclonic regions (suits tanks up to 13,500 litres)
TTK-03	Tank tie down kit - includes four x lashings rated for cyclonic regions (suits 14,000 to 50,000 litre tank)



Features

- An essential tie down for all tanks placed on concrete pads or footings
- Space saving advantage over lashing kits
- Engineered for a large range of tanks in a variety of cyclonic regions
- Significantly reduces trip hazards associated with other lashing kits



Column Tie Down

Column Tie Downs

Code	Description
TTK-05	Engineered Column Style Cyclonic Tie Down Kit to Suit 2,500 Litre
TTK-07	Engineered Column Style Cyclonic Tie Down Kit to Suit 4,500 Litre
TTK-08	Engineered Column Style Cyclonic Tie Down Kit to Suit 9,000 Litre
TTK-09	Engineered Column Style Cyclonic Tie Down Kit to Suit 9,500 Litre
TTK-10	Engineered Column Style Cyclonic Tie Down Kit to Suit 10,500 Litre
TTK-11	Engineered Column Style Cyclonic Tie Down Kit to Suit 13,500 Litre
TTK-12	Engineered Column Style Cyclonic Tie Down Kit to Suit 5,300 Litre
TTK-13	Engineered Column Style Cyclonic Tie Down Kit to Suit 14,000 Litre
TTK-14	Engineered Column Style Cyclonic Tie Down Kit to Suit 22,500 Litre
TTK-15	Engineered Column Style Cyclonic Tie Down Kit to Suit 25,000 Litre
TTK-17	Engineered Column Style Cyclonic Tie Down Kit to Suit 32,000 Litre
TTK-18	Engineered Column Style Cyclonic Tie Down Kit to Suit 50,000 Litre

Tank Modifications and Accessories

Industrial Process Tanks



Tank Tie Down Block

Tank Tie Down Block

Code	Description
TTB-2500	2/5T Concrete Tie Down Block (1000mm x 1000mm x 1000mm)

Features

- Ideal for the tie down of tanks
- Integrated galvanised threads and/or ferrules
- Engineered reinforced blocks for use in cyclonic regions
- Swiftlifters/fork pockets cast-in for ease of placement



Tank Level Gauges

Code	Description
TAL-7	Dip-stick tank level gauge
TAL-10	Liquidator tank level gauge
TAL-12	Liquidator 2 tank level gauge



Dipstick (TAL-7)

- 360 degrees visibility



Liquidator (TAL-10)

- Ideal for chemical tanks, only the float is in contact with liquid
- Captive guided indicator, unaffected by wind or other disturbances



Liquidator 2 (TAL-12)

- Made to fit on curved and unusually shaped roofs
- Ideal for chemical tanks, only the float is in contact with liquid
- Captive guided indicator, unaffected by wind or other disturbances

Access Manholes and Signage

Industrial Process Tanks



SIGN-10-01



COMP-33-10



MT-SAM710



COMP-33-62



SIGN-10-04

Access Manholes and Signage

Code	Description
COMP-33-11	455mm Manhole Lid, Rim and Seal
COMP-33-10	600mm Manhole Lid, Rim and Seal
COMP-33-62	600mm x 600mm Aluminum Hinged Access Cover
MT-SAM710	710mm Side Access Manhole
SIGN-10-01	Confined Space Danger Signage
SIGN-10-03	SWL Lifting Lug Sign (130mm x 60mm)
SIGN-10-04	Stainless Steel Asset Number Sign (100mm x 60mm)
SIGN-10-05	Stainless Steel Asset Number Sign (150mm x 100mm)



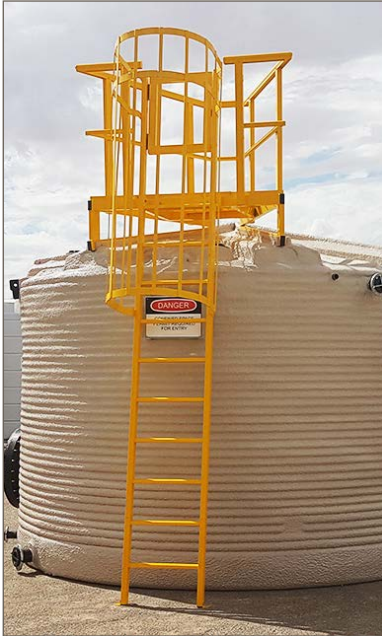
Access Ladders

Industrial Process Tanks



Features

- Manufactured in compliance with Australian Standard AS1657
- Manufactured from marine grade T6 Aluminium
- Light weight and simple installation
- Specifically designed to suit the Coerco tank range
- Stainless steel fixings
- Custom designed and engineered to suit any requirements (optional)
- Painted in Y14 safety yellow or a galvanised finish (optional)



Access Ladders - Galvanised Steel	
Code	Description
HAL-10500G	Hatch access ladder to suit IT10500 manufactured from galvanised steel in compliance with AS1657
HAL-13500G	Hatch access ladder to suit IT13500 manufactured from galvanised steel in compliance with AS1657
HAL-14000G	Hatch access ladder to suit IT14000 manufactured from galvanised steel in compliance with AS1657
HAL-22500G	Hatch access ladder to suit IT22500 manufactured from galvanised steel in compliance with AS1657
HAL-25000G	Hatch access ladder to suit IT25000 manufactured from galvanised steel in compliance with AS1657
HAL-32000G	Hatch access ladder to suit IT32000 manufactured from galvanised steel in compliance with AS1657
HAL-50000G	Hatch access ladder to suit IT50000 manufactured from galvanised steel in compliance with AS1657

Please note tank sizes may vary between States and Territories in Australia

Access Ladders

Industrial Process Tanks



Access Ladders - Aluminium

Code	Description
HAL-10500A	Hatch access ladder to suit IT10500 manufactured from marine grade aluminium in compliance with AS1657
HAL-13500A	Hatch access ladder to suit IT13500 manufactured from marine grade aluminium in compliance with AS1657
HAL-14000A	Hatch access ladder to suit IT14000 manufactured from marine grade aluminium in compliance with AS1657
HAL-22500A	Hatch access ladder to suit IT22500 manufactured from marine grade aluminium in compliance with AS1657
HAL-25000A	Hatch access ladder to suit IT25000 manufactured from marine grade aluminium in compliance with AS1657
HAL-32000A	Hatch access ladder to suit IT32000 manufactured from marine grade aluminium in compliance with AS1657
HAL-50000A	Hatch access ladder to suit IT50000 manufactured from marine grade aluminium in compliance with AS1657

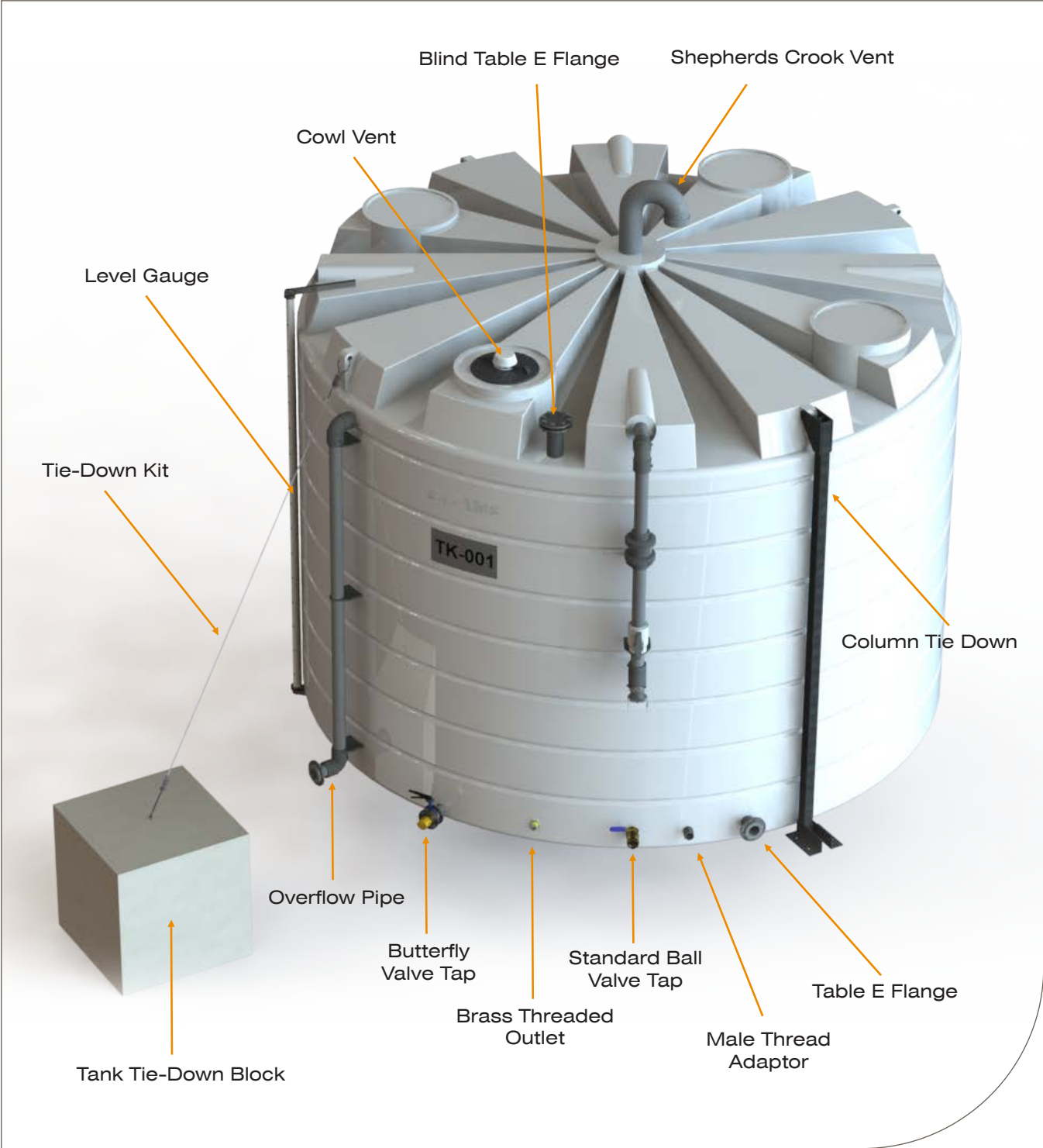
Access Ladders - Painted Aluminium

Code	Description
HAL-10500P	Hatch access ladder to suit IT10500 manufactured from marine grade aluminium in compliance with AS1657 and painted in Y14 safety yellow
HAL-13500P	Hatch access ladder to suit IT13500 manufactured from marine grade aluminium in compliance with AS1657 and painted in Y14 safety yellow
HAL-14000P	Hatch access ladder to suit IT14000 manufactured from marine grade aluminium in compliance with AS1657 and painted in Y14 safety yellow
HAL-22500P	Hatch access ladder to suit IT22500 manufactured from marine grade aluminium in compliance with AS1657 and painted in Y14 safety yellow
HAL-25000P	Hatch access ladder to suit IT25000 manufactured from marine grade aluminium in compliance with AS1657 and painted in Y14 safety yellow
HAL-32000P	Hatch access ladder to suit IT32000 manufactured from marine grade aluminium in compliance with AS1657 and painted in Y14 safety yellow
HAL-50000P	Hatch access ladder to suit IT50000 manufactured from marine grade aluminium in compliance with AS1657 and painted in Y14 safety yellow

Please note tank sizes may vary between States and Territories in Australia

HDPE Fittings and Accessories For Any Project Requirement

Industrial Process Tanks



Tank Modifications and Accessories

Industrial Process Tanks

HDPE Fittings and Accessories For Any Project Requirement

Coerco has a team of qualified poly welding staff who ensure the highest quality standards, which ensures quick site installation and reduced downtimes.

Features

- High Density Polyethylene (HDPE) fittings for all applications including inlets, outlets, anti-vortex and overflow fittings
- Electrofusion welded fittings to suit pipe work of all sizes
- Custom outlets, access hatches, stub flanges, manifolds and vents.
- Modifications to suit all purposes such as agitation, chemical processing, storage and transfer, fire systems, and waste water

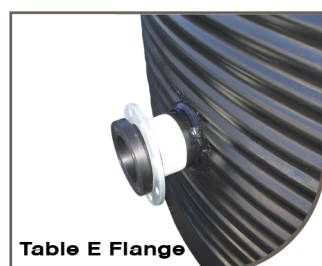


Table E Flange



Male Thread Adaptor



Female Thread Adaptor



Anti-Vortex



Top Fill



Cowl Vent



Shepherds Crook Vent



Brass Threaded Outlets



Stainless Steel Threaded Outlets



Poly Threaded Outlet



90mm PVC Mesh Overflow



Overflow Pipe



Standard Ball Valve Tap



Poly Ball Valve



Butterfly Valve Tap



Rubber Bellows

Septic Tanks

Wastewater Systems

Coerco offers a range of poly septic tank systems which are easily adaptable to suit any requirement and are approved by the Department of Health WA. Manufactured from polyethylene, these products are lightweight, resilient and very flexible to allow easy transportation and installation whilst delivering the perfect desired functionality.



Features

- Lightweight, easy to transport and install
- Manufactured from durable polyethylene
- Anti floatation ring and ribbing incorporated into design
- Certified to Australian Standard AS/NZS1546.1 and approved by Department of Health - WA
- Supplied as complete kit including lid, inlet and outlet 'T' pieces
- Leach drain systems also available (Refer to page 31)

Septic Tanks	
Code	Description (mm)
SEP-7000	7,000 Litre Underground Septic Tank
SEP-11000	11,000 Litre Underground Septic Tank
SEP-15000	15,000 Litre Underground Septic Tank
SEP-19000	19,000 Litre Underground Septic Tank
SEP-23000	23,000 Litre Underground Septic Tank
SEP-27000	27,000 Litre Underground Septic Tank
SEP-31000	31,000 Litre Underground Septic Tank

Septic Tank Accessories	
Code	Description (mm)
EFD-100	100mm Effluent Diverter

Leach Drain Systems

Wastewater Systems



*This flatbed leach drain consists of the flo-cell® product

Benefits

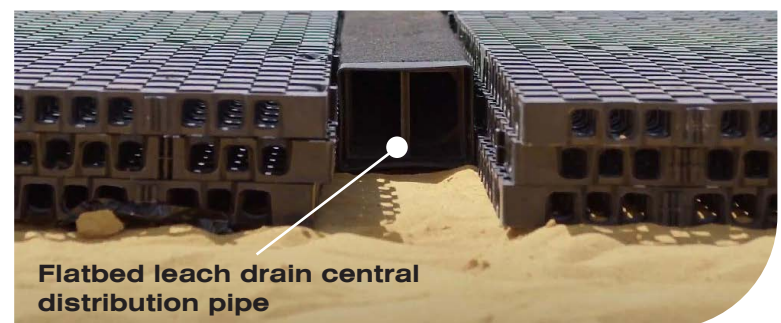
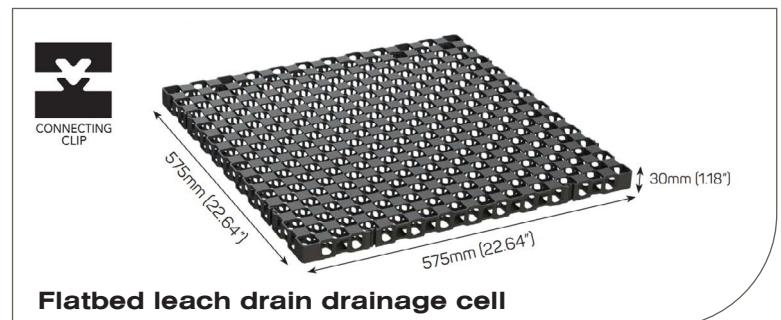
- Approved for use by the Department of Health – Western Australia
- Australian Standard 1546: On-site domestic wastewater treatment
- Resistant to moulds, algae, soil-borne chemicals, bacteria, and bitumen
- 15-year warranty
- An estimated life span of over 100 years if there are no ultraviolet exposure
- Flo-Cell has an ultimate compressive strength of 50t/m²
- A service temperature of -10°C up to 70 °C
- Made of the highest quality polypropylene for durability
- Ready-to-use; no assembly required
- Lightweight - easy to transport and install

Applications

- Trench Drainage
- Sub-soil Drainage
- Wall & Foundation Drainage
- Sub-surface Drainage
- Podium Landscape
- Sports Fields

Flatbed Leach Drain

The flatbed leach drain is a major component of our premium septic system and complements our septic tank products. It consists of a central distribution pipe, drainage cells, and geofabric.



Flatbed Leach Drain Installation



1. Level & compact site then lay out centre distribution pipe.



2. Lay out drainage cells on either side.



3. Lay Geo-Fabric on top and backfill.

Leach Drain Systems

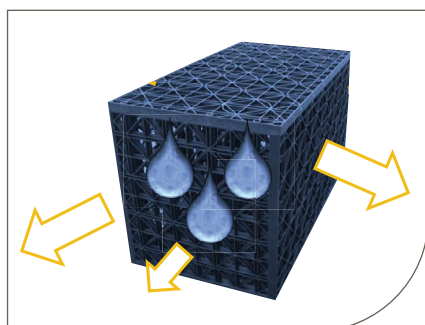
Wastewater Systems

Flatbed Leach Drain Types

Coerco offers two different versions of flatbed leach drain – the standard flatbed has three layers, and the sand/loam flatbed has two layers. The standard flatbed can be used for any soil category, while the sand/loam flatbed is suitable for soil categories 1 to 3 (sand, gravel, and loam).



Modular Leach Drain



Coerco's modular leach drain systems are design to integrate efficiently with our septic tank units although can be utilised in any waste water situation requirement that requires a leaching system.

Manufactured from strong light weight polypropylene, they are an easy to install, cost effective solution for effluent waste issues. They are flat packed for portable and efficient logistics. The systems are very flexible with a range of configurations for every individual requirement and designed to meet strict industry regulations and standards.

Features

- Made from 100% recycled material
- Light weight
- Modular
- 95% void area
- Strong
- Service temperature from -20°C – 120°C
- Polypropylene
- Flat pack form

Benefits

- Environmentally friendly
- Simple to install
- Easy to deliver
- Cost effective
- Chemically inert
- Not affected by mould or algae
- UV stabilised
- Water saving
- 100% recyclable



*These modular leach drains consist of the Protank product.

Vertical Underground Tanks

Wastewater Systems



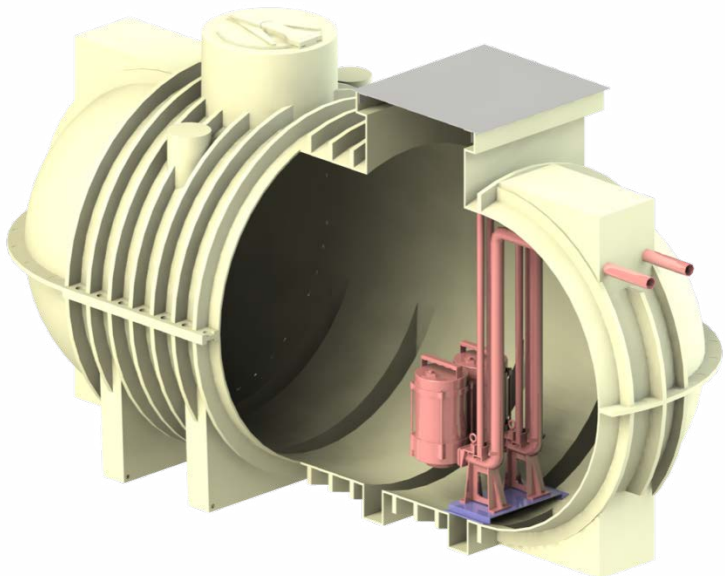
Features

- Manufactured from durable polyethylene
- Approved to requirements of Australian Standard AS/NZS1546.1
- Engineered design with ribs for hold-down by backfill
- Chemical and effluent resistant
- Impact resistant but lightweight for easy installation
- Integrated lifting lugs
- Base designed for maximum strength and pump out
- Levelling legs including tie down/anchor points for high water table applications
- Suitable for a wide range of pumps
- Range of lid options available

Vertical Underground Tanks

Code	Description (mm)
PP-600	600 Litre Vertical Underground Tank - Bare
PP-900	900 Litre Vertical Underground Tank - Bare
PP-1200	1,200 Litre Vertical Underground Tank - Bare
PP-600A	600 Litre Vertical Underground Tank with Poly Lid and Gasket - Class A Loads Only
PP-900A	900 Litre Vertical Underground Tank with Poly Lid and Gasket - Class A Loads Only
PP-1200A	1,200 Litre Vertical Underground Tank with Poly Lid and Gasket - Class A Loads Only

Larger Sizes Available



Grease Arrestors

Wastewater Systems





GA-1200 (Coming Soon)



GA-2000 (Available Now)



GA-4000 (Coming Soon)

Features

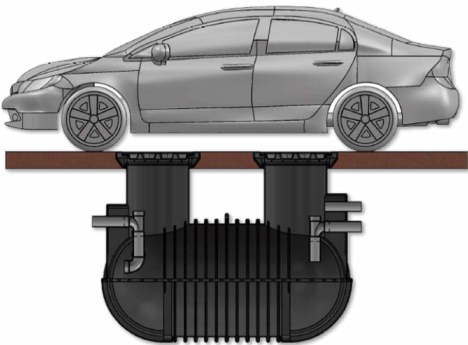
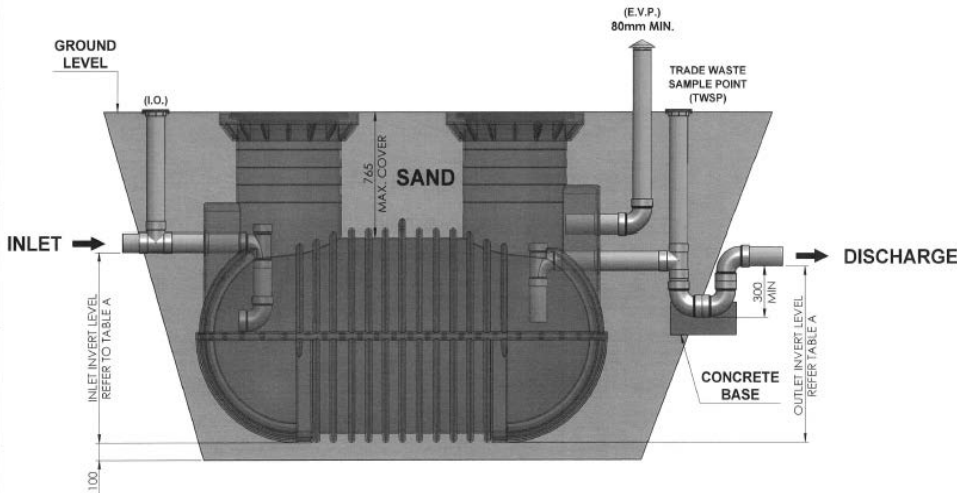
- Durable and robust
- Water Corporation approved
- Different manhole lids available
- Optional above ground installation

Grease Arrestors				
Code	Description	Lid NoTraffic	Lid Class B	Lid Class D
GA-1200	1,200Ltr Grease Arrestor (Coming Soon)	✓	✓	✓
GA-2000	2,000Ltr Grease Arrestor	✓	✓	✓
GA-4000	4,000Ltr Grease Arrestor (Coming Soon)	✓	✓	✓



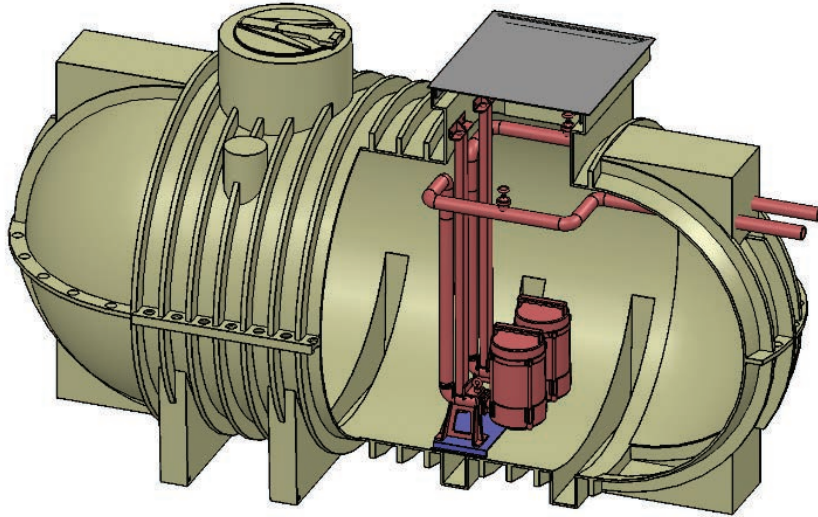
Class D Circular Solid Cast Iron Lid, C&F (600mm Diameter)

Solid Cast Iron Lid	
Code	Description
COMP-33-58	Class B Circular Solid Cast Iron Lid, C&F (600mm Diameter)
COMP-33-59	Class D Circular Solid Cast Iron Lid, C&F (600mm Diameter)



Lift Stations

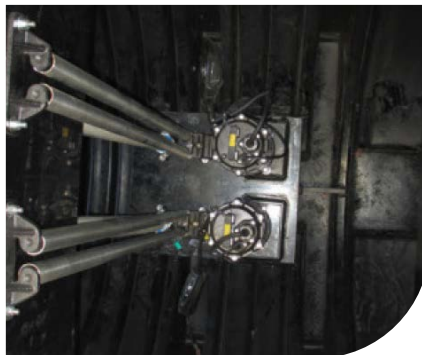
Wastewater Systems



*pumps for illustration purpose only

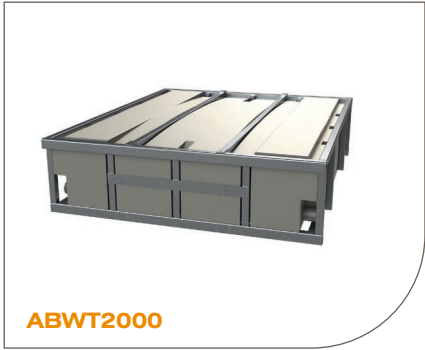
Features

- Custom built to suit any pump size or design
- Tested one piece tough poly tank
- Chemical and impact resistant
- Manufactured from durable, light weight polyethylene
- Ease of installation



Standard Profile

Ablution Waste Tanks



- Features**
- Heavy duty steel frame
 - Engineer certified
 - Certified to withstand 7,000kg
 - Six sizes to suit any application
 - Durable polyethylene tanks, which will not rust
 - Certified lifting tabs
 - Steel tow hooks on all sizes
 - Tank pump out port available

Standard Profile Ablution Waste Tanks	
Code	Description (mm)
ABWT2000SF	2,000 Litre ablution waste tank (2450mm L x 2158mm W x 660mm H)
ABWT4000SF	4,000 Litre ablution waste tank (4000mm L x 2430mm W x 660mm H)
ABWT6000SF	6,000 Litre ablution waste tank (6000mm L x 2430mm W x 660mm H)
ABWT8000SF	8,000 Litre ablution waste tank (8000mm L x 2430mm W x 660mm H)
ABWT10000SF	10,000 Litre ablution waste tank (10000mm L x 2430mm W x 660mm H)
ABWT12000SF	12,000 Litre ablution waste tank (12000mm L x 2430mm W x 660mm H)



Custom Skids/Tanks

Ablution Waste Tanks



Features

- Heavy duty steel frame
- Custom built skid to suit your requirement with engineering available
- Tanks manufactured from durable, UV resistant polyethylene
- Custom fit nozzles to suit your requirements



Fabricated Steps to Cabin

Ablution Waste Tanks



Features

All custom steps are designed and manufactured in accordance with AS1657 to fit any purpose required. Each project is carefully designed in accordance with budget restraints, purpose and always in compliance with all relevant Australian Standards.

Options are

- Hot dipped galvanised construction
- Hot dipped galvanised handrail and painted for longevity
- Forklift pockets
- Anti slip flooring
- Aluminium, stainless and FRP options are available.

Portable Tank Systems

Greywater Tank Systems



- Features**
- Available in several capacities
 - Heavy duty galvanised steel skid frame
 - Certified lifting points for crane or forklift
 - Optional full UV filtration for hassle free potable water
 - Durable polyethylene tanks, which means no rust
 - Removable pump cover
 - Commercial pressure pump plumbed to tank
 - Suitable for shower and washrooms, ablution buildings, kitchens/messes, construction sites and public events
 - Statewide delivery

Portable Greywater Tank Systems (PGTS)		
Code	Description	Includes
PGTS1000	1000L Portable Greywater Tank System	1.3SG Mist Green Tank on Skid
PGTS2500	2500L Portable Greywater Tank System	
PGTS4500	4500L Portable Greywater Tank System	
PGTS9000	9000L Portable Greywater Tank System	
PGTS10500	10500L Portable Greywater Tank System	
PGTS14000	14000L Portable Greywater Tank System	

Portable Tank Systems

Potable Water Tank Systems



Features

- Available in several capacities
- Heavy duty galvanised steel skid frame
- Certified lifting points for crane or forklift
- Optional full UV filtration for hassle free potable water
- Durable polyethylene tanks, which means no rust
- Removable pump cover
- Commercial pressure pump plumbed to tank
- Suitable for shower and washrooms, ablution buildings, kitchens/messes, construction sites and public events
- Statewide delivery

Potable Water Tank Systems - Tank on Skid

Code	Description	Includes
PPTS1000	1000L Potable Water Tank System	1SG Mountain Blue Tank on Skid - Excludes Pumps, Filters
PPTS2500	2500L Potable Water Tank System	
PPTS4500	4500L Potable Water Tank System	
PPTS9000	9000L Potable Water Tank System	
PPTS10500	10500L Potable Water Tank System	
PPTS14000	14000L Potable Water Tank System	

Potable Water Tank Systems - Tank on Skid with Pump

Code	Description	Includes
PPTS1000-P	1000L Potable Water Tank System - With Pump	1SG Mountain Blue Tank on Skid - Including 55LPM Pump, Filter, Hose
PPTS2500-P	2500L Potable Water Tank System - With Pump	
PPTS4500-P	4500L Potable Water Tank System - With Pump	
PPTS9000-P	9000L Potable Water Tank System - With Pump	
PPTS10500-P	10500L Potable Water Tank System - With Pump	
PPTS14000-P	14000L Potable Water Tank System - With Pump	

Potable Water Tank Systems - Tank on Skid with Pump and UV System

Code	Description	Includes
PPTS1000-P-UV	1000L Potable Water Tank System - With Pump & UV System	1SG Mountain Blue Tank on Skid - Including 55LPM Pump, Filter, Hose and UV System
PPTS2500-P-UV	2500L Potable Water Tank System - With Pump & UV System	
PPTS4500-P-UV	4500L Potable Water Tank System - With Pump & UV System	
PPTS9000-P-UV	9000L Potable Water Tank System - With Pump & UV System	
PPTS10500-P-UV	10500L Potable Water Tank System - With Pump & UV System	
PPTS14000-P-UV	14000L Potable Water Tank System - With Pump & UV System	

Free Standing Liquid Transport Tanks

Liquid Transportation

Features

- Easy to read calibrations†
- Durable, impact resistant, UV stabilised polyethylene for long life
- One outlet supplied with each tank, quantity and sizes optional
- Spill containment lip surrounds the lid
- Integral baffle options to reduce surge and increase stability*
- Optional ball baffle system and a galvanised skid that can be lifted with a forklift

10 Year
Warranty
LIQUID TRANSPORTATION
TANKS



Free Standing Liquid Transport Tanks

Code	Description (mm)
ST400FS	400 Litre Free Standing Liquid Transport Tank - (1250L x 850W x 650H)
ST600FS	600 Litre Free Standing Liquid Transport Tank - (1350L x 980W x 710H)
ST800FS	800 Litre Free Standing Liquid Transport Tank - (1370L x 1100W x 860H)
ST1000FS	1,000 Litre Free Standing Liquid Transport Tank - (1370L x 1210W x 960H)
ST1500FS	1,500 Litre Free Standing Liquid Transport Tank - (1780L x 1260W x 1045H)
ST2000FS	2,000 Litre Free Standing Liquid Transport Tank - (1830L x 1400W x 1130H)
ST3000FS	3,000 Litre Free Standing Liquid Transport Tank - (2365L x 1460W x 1300H) - Non Baffled
ST5000FS	5,000 Litre Free Standing Liquid Transport Tank - (2425L x 1830W x 1708H) - Non Baffled
ST7000FS	7,000 Litre Free Standing Liquid Transport Tank - (3400L x 1850W x 1670H)
ST10000FS	10,000 Litre Free Standing Liquid Transport Tank - (3600L x 2110W x 2020H)
ST12500FS	12,500 Litre Free Standing Liquid Transport Tank - (3930L x 2200W x 2085H) - Non Baffled
ST17000FS	17,000 Litre Free Standing Liquid Transport Tank - (4630L x 2330W x 2350H) - Non Baffled

Free Standing Liquid Transport Tanks Skid Frames

Code	Description (mm)
SKD-FS-400	Duralgalv Skid Frame To Suit 400L Free Standing Cartage Tank
SKD-FS-600	Duralgalv Skid Frame To Suit 600L Free Standing Cartage Tank
SKD-FS-800	Duralgalv Skid Frame To Suit 800L Free Standing Cartage Tank
SKD-FS-1000	Duralgalv Skid Frame To Suit 1000L Free Standing Cartage Tank
SKD-FS-1500	Duralgalv Skid Frame To Suit 1500L Free Standing Cartage Tank
SKD-FS-2000	Duralgalv Skid Frame To Suit 2000L Free Standing Cartage Tank - Fork Accessible
SKD-FS-3000	Duralgalv Skid Frame To Suit 3000L Free Standing Cartage Tank - Fork Accessible
SKD-FS-5000	Duralgalv Skid Frame To Suit 5000L Free Standing Cartage Tank - Fork Accessible
SKD-FS-7000	Duralgalv Skid Frame To Suit 7000L Free Standing Cartage Tank - Fork Accessible
SKD-FS-10000	Duralgalv Skid Frame To Suit 10000L Free Standing Cartage Tank - Fork Accessible
SKD-FS-12500	Duralgalv Skid Frame To Suit 12500L Free Standing Cartage Tank - Fork Accessible
SKD-FS-17000	Duralgalv Skid Frame To Suit 17000L Free Standing Cartage Tank - Fork Accessible

* Except 3000, 5000, 12500 & 17000ltr Models

† Calibrations and sight tube readings should be taken as an approximate measure of volume only.

Sump Based Liquid Transport Tanks

Liquid Transportation

10 Year
Warranty

LIQUID TRANSPORTATION
TANKS

Features

- Durable, impact resistant, UV stabilised polyethylene for long life
- Easy to read calibrations†
- Stainless steel lid and basket filter
- One outlet supplied with the tank, quantity and sizes optional
- Spill containment lip surrounds the lid
- Smooth interior and integral sump model enabling complete evacuation and decontamination of tank making chemical changes easier
- Available with robust hot dipped galvanised steel mounting frame for protection of tank and ease of installation
- Mounting pins supplied as standard. Extra mounting pins available
- Optional ball baffle system available



Sump Base



Note that the sump sits lower than the legs

Sump Based Liquid Transport Tanks

Code	Description (mm)
ST400	400 Litre Sump Based Liquid Transport Tank - (1250L x 850W x 650H)
ST600	600 Litre Sump Based Liquid Transport Tank - (1350L x 980W x 710H)
ST800	800 Litre Sump Based Liquid Transport Tank - (1370L x 1100W x 860H)
ST1000	1,000 Litre Sump Based Liquid Transport Tank - (1355L x 1210W x 960H)
ST1500	1,500 Litre Sump Based Liquid Transport Tank - (1750L x 1250W x 1045H)
ST2000	2,000 Litre Sump Based Liquid Transport Tank - (1880L x 1410W x 1130H)
ST3000	3,000 Litre Sump Based Liquid Transport Tank - (2365L x 1460W x 1300H)
ST5000	5,000 Litre Sump Based Liquid Transport Tank - (2425L x 1830W x 1708H)
ST7000	7,000 Litre Sump Based Liquid Transport Tank - (3400L x 1850W x 1670H)
ST10000	10,000 Litre Sump Based Liquid Transport Tank - (3660L x 2110W x 2020H)
ST12500	12,500 Litre Sump Based Liquid Transport Tank - (3930L x 2200W x 2105H)

Sump Based Liquid Transport Tank Skid Frames

Code	Description (mm)
SKD-SU-400	Duragalv Skid Frame To Suit 400L Sump Based Cartage Tank
SKD-SU-600	Duragalv Skid Frame To Suit 600L Sump Based Cartage Tank
SKD-SU-800	Duragalv Skid Frame To Suit 800L Sump Based Cartage Tank
SKD-SU-1000	Duragalv Skid Frame To Suit 1000L Sump Based Cartage Tank
SKD-SU-1500	Duragalv Skid Frame To Suit 1500L Sump Based Cartage Tank
SKD-SU-2000	Duragalv Skid Frame To Suit 2000L Sump Based Cartage Tank - Fork Accessible
SKD-SU-3000	Duragalv Skid Frame To Suit 3000L Sump Based Cartage Tank - Fork Accessible
SKD-SU-5000	Duragalv Skid Frame To Suit 5000L Sump Based Cartage Tank - Fork Accessible
SKD-SU-7000	Duragalv Skid Frame To Suit 7000L Sump Based Cartage Tank - Fork Accessible
SKD-SU-10000	Duragalv Skid Frame To Suit 10000L Sump Based Cartage Tank - Fork Accessible
SKD-SU-12500	Duragalv Skid Frame To Suit 12500L Sump Based Cartage Tank - Fork Accessible

† Calibrations and sight tube readings should be taken as an approximate measure of volume only.

Skid Mounted Dust Suppression Units

Liquid Transportation and Dust Suppression



Product images are a close guide only and may not represent actual product

Dust Suppression Equipment Features:

- Features a portable dust suppression spray tank on a galvanised skid mounted frame with forklift access for manoeuvrability on and off trucks and trailers during dust control operations
- Sturdy lash down points on the frame for secure transport
- High-grade finish on all safety rail kits
- Hose reel for spot dust control or rinsing/wash down applications
- Unique stow-away, ground access ladder for hose reel/pump operation
- Lid access ladder and handrails for safe filling operations
- Left and right or centre deflector sprays with individual ball valve on/off control with remote control cab actuator control
- Available in a range of capacities up to 17,000 litres



Other Features:

- Range of pump options including hydraulic driven or diesel engine driven for high pressure supply to batter sprays, dribble bars or water cannons
- Transfer pumps with camlock fittings for easy use
- A variety of options for spray fittings, valves, hoses, and setup

Waste Transfer Systems

Liquid Transportation and Dust Suppression



Product images are a close guide only and may not represent actual product

Feature Options

- Range of trash pumps available
 - Diesel or Petrol
- Designed and manufactured for easy operation
- Durable UV stabilised polyethylene tank with a Baffle
- Galvanised chassis frame
- Heavy duty pivot jockey wheel
- Landcruiser stud pattern rims
- Suction hose for waste tank pump outs
- Mine site ready options available



Accessories

Liquid Transportation Product Accessories



Transport Tank Lids and Basket Filters

Code	Description (mm)
COMP-33-01	255mm Screw Lid, Rim and Seal
COMP-33-04	255mm Strainer Basket
COMP-33-05-PPE	355mm Screw Lid
COMP-33-07-PPE	355mm Strainer Basket
COMP-33-08-PPE	455mm Screw Lid
COMP-33-09-PPE	455mm Strainer Basket
SSTL-455	455mm Stainless Steel Hinged Lid and Seal

Features

- Tested and approved by Loadsafe Australia and complies with load restraint guide performance standards
- Reduces fluid movement for improved load stability during transit
- Independent testing shows 46 percent improvement in braking
- Slalom testing shows a remarkable increase in vehicle stability with a two thirds full water tank fitted with a Baffle Ball System®
- Suitable for use with all tanks - steel, poly or fibreglass, etc
- Food grade quality material, which is suitable for potable water
- Can be used with water, diesel and other liquids
- Will not rust and is lightweight and durable
- Low liquid displacement
- Simple to install
- Recommended quantities include: 355mm is one ball baffle per 40 litres of tank capacity
- Ball baffles are supplied in two halves and must be clipped together and inserted through the lid into the tank



Baffle Ball

Code	Description (mm)
SBB355	Large Baffle Ball - 355mm

Mounting Pins

Code	Description (mm)
STA-20-2	Set of (4x PART-05-02) Mounting Pins to suit 400 and 600 Litre Cartage Tanks
STA-25	Set of (4x PART-05-03) Mounting Pins to suit 800-5,000 Litre Cartage Tanks
STA-38	Set of (4x PART-05-04) Mounting Pins to suit 7,000 Litre Cartage Tank
STA-47	Set of (4x PART-05-05) Mounting Pins to suit 10,000 Litre Cartage Tank
STA-38-2	Set of (8x PART-05-04) Mounting Pins to suit 12,500-17,000 Litre Cartage Tank



Accessories

Liquid Transportation Product Accessories



Platform Safety Rails

Code	Description (mm)
MT-PSR	Platform Safety Rail Kit To Suit Heavy Duty Skids

Hatch Access Ladders

Code	Description (mm)
MT-HAL	Hatch Access Ladder To Suit Heavy Duty Skids

Ground Access Ladders

Code	Description (mm)
MT-GAL	Ground Access Ladder To Suit Heavy Duty Skids



Poly Tank Fittings

- Available in six sizes
- Manufactured from UV stabilised glass fibre reinforced nylon provides resistance to the weather, termites, fungi and bacteria



Brass Tank Fittings

- Brass tank fittings have internal and external threads (25-50mm)
- Locking nut is left hand thread for a secure fit. Doesn't come loose when fitting valves



Brass Lever Ball Valve



Poly Ball Valve

Tank Flange Fittings

Code	Description (mm)
COMP-19-02	25mm (1") Poly Fitting
COMP-19-03	32mm (1 1/4") Poly Fitting
COMP-19-04	40mm (1 1/2") Poly Fitting
COMP-19-05	50mm (2") Poly Fitting
COMP-19-06	80mm (3") Poly Fitting
COMP-19-07	100mm (4") Poly Fitting
COMP-01-01	25mm (1") Brass Fitting
COMP-01-02	32mm (1 1/4") Brass Fitting
COMP-01-03	40mm (1 1/2") Brass Fitting
COMP-01-04	50mm (2") Brass Fitting
COMP-01-05	80mm (3") Brass Fitting
COMP-01-06	100mm (4") Brass Fitting

Ball Valves and Taps

Code	Description
COMP-37-01	Brass Lever Ball Valve – 25mm BSP Thread
COMP-37-02	Brass Lever Ball Valve – 32mm BSP Thread
COMP-37-03	Brass Lever Ball Valve – 40mm BSP Thread
COMP-37-04	Brass Lever Ball Valve – 50mm BSP Thread
COMP-37-07	Brass Lever Ball Valve – 80mm BSP Thread
COMP-37-08	Brass Lever Ball Valve – 100mm BSP Thread
COMP-36-01	Poly Ball Valve – 25mm BSP Thread
COMP-36-02	Poly Ball Valve – 32mm BSP Thread
COMP-36-03	Poly Ball Valve – 40mm BSP Thread
COMP-36-04	Poly Ball Valve – 50mm BSP Thread
COMP-36-05	Poly Ball Valve – 80mm BSP Thread
COMP-36-06	Poly Ball Valve – 100mm BSP Thread

Skid Mounted Water Delivery Units

Water Delivery Equipment



FF1000C

Product images are a close guide only and may not represent actual product

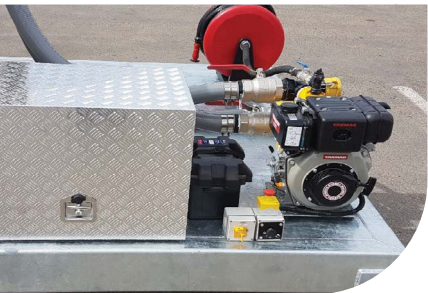
Features

- Durable UV stabilised white polyethylene tank with a baffle
- Secure screw lid
- Strong hot dipped galvanised steel frame with easy lifting and tie down points
- Hot dipped galvanised steel hose reel with 30m of 25mm hose - complete with adjustable nozzle and hose reel lock
- 50mm camlock quick connection fittings
- A six metre suction hose with a non-return foot valve
- Diesel engine pump options available for mine specifications

Skid Mount Water Delivery Units	
Code	Description (mm)
FF400C	400 Ltr Skid Mounted Firefighter - (1950L x 1250W x 700H)
FF600C	600 Ltr Skid Mounted Firefighter - (2040L x 1300W x 800H)
FF800C	800 Ltr Skid Mounted Firefighter - (2210L x 1400W x 850H)
FF1000C	1,000 Ltr Skid Mounted Firefighter - (2275L x 1400W x 1050H)
FF1500C	1,500 Ltr Skid Mounted Firefighter - (2600L x 1250W x 1050H)
FF2000C	2,000 Ltr Skid Mounted Firefighter - (2850L x 1350W x 1150H)

*Larger models available

- Options
- Diesel-powered pump
 - High pressure twin impeller pump
 - Ball Baffle System® (refer to page 46)



Compact Skid Mounted Water Delivery Units

Water Delivery Equipment



FFCH600



FFCH800



FFCH1000

Features

- All sizes with sump drain for complete evacuation of tank contents
- All sizes with forklift access
- Durable UV stabilised polyethylene tank for long life
- Secure screw lid
- Strong hot dip galvanised steel frame with easy lifting and tie down points
- Hot dipped galvanised steel hose reel with 30m of 25mm hose - complete with adjustable nozzle and hose reel lock
- 6mtr suction hose with foot valve
- Aussie Fire Chief Pump with a 5-year pump end warranty and powered by a HONDA engine
- Compact design - Ideal for tray back utes
- 50mm camlock quick connection fittings

Compact Skid Mounted Water Delivery Units

Code	Description (mm)
FFCH600	600 Ltr Compact Firefighter - (1675L x 1185W x 1025H)
FFCH800	800 Ltr Compact Firefighter - (1675L x 1185W x 1045H)
FFCH1000	1,000 Ltr Compact Firefighter - (1675L x 1185W x 1240H)

Options

- Diesel powered pump
- Ball Baffle System®



Trailed Water Delivery Units

Water Delivery Equipment



FF800T

Product images are a close guide only and may not represent actual product

Features

- Designed and manufactured for easy operation.
- Durable UV stabilised white polyethylene tank with a Baffle
- Secure screw lid
- Galvanised chassis frame
- Heavy duty pivot jockey wheel.
- Landcruiser stud pattern rims.
- Reliable Honda engine powered pump (different models available)
- 50mm camlock quick connection fittings.
- Hot dipped galvanised steel hose reel with 30m of 25mm hose - complete with adjustable nozzle and hose reel lock
- Suction hose with a non return foot valve.

Options

- Diesel powered pump
- Tool/storage box
- Twin hose reels
- Spare tyre carrier
- Fire extinguisher
- Ball Baffle System® (refer to page 46)

Trailed Water Delivery Units

Code	Description (mm)
FF600T	600 Ltr Single Axle Firefighter Trailer Unit
FF800T	800 Ltr Single Axle Firefighter Trailer Unit
FF1000T	1,000 Ltr Single Axle Firefighter Trailer Unit
FF1000TT	1,000 Ltr Tandem Axle Firefighter Trailer Unit
FF1500TT	1,500 Ltr Tandem Axle Firefighter Trailer Unit
FF2000TT	2,000 Ltr Tandem Axle Firefighter Trailer Unit
FF3000TT	3,000 Ltr Tandem Axle Firefighter Trailer Unit

Brake Systems

Code	Description (mm)
MT-SAMB	Single Axle Mechanical Override Brakes
MT-TAMB	Tandem Axle Mechanical Override Brakes
MT-TAEB	Tandem Axle Electric Brakes

i 3,000L trailer is only available either unbraked or with electric brakes (mechanical brakes are not an option)

Licensing Requirements

Code	Description (mm)
MT-LICP	License Inspection Compliance Plate
MT-LI	License Inspection (Includes Paperwork Ready For Registration)
MT-ILK	Indicator Lamp Kit

Water Delivery Accessories

Water Delivery Equipment



Motor & Pump Options



**Petrol Recoil Start
Honda Engine with 2"
Aussie FireChief Pump**



**Petrol Electric Start
Honda Engine with 2"
Aussie FireChief Pump**



**Diesel Electric Start
Yanmar Engine with 2"
Aussie FireChief Pump**



**Hydraulic Driven
Pump**

Reel Options



**Manual
Rewind Reel**



**Auto
Rewind Reel**

Pressure Washer Options



**Diesel Electric Start
Yanmar Engine with
Australian Pumps
Pressure Washer Pump**



**Pressure Washer
Reel and Lance**



**Hot and Cold Pressure
Washer Pump and
Reel Setup**

Dust Suppression Options



**Left and Right Batter
Spray Heads**



Dribble Bar



Water Canon



**Remote In-Cab
Controls**

Skid Mount Pressure Washer Units

Pressure Washer Equipment



Skid Mount Pressure Washer Unit Features

Tank	Frame	Pump & Hose Reel
<ul style="list-style-type: none">• High-grade, UV stabilised polyethylene tank• Secure screw lid• Sight tube for easy viewing of content volume• Ball baffle system	<ul style="list-style-type: none">• Strong hot dipped galvanised steel frame with tie down points• Forklift access points	<ul style="list-style-type: none">• Different pump models available including Bertolini and Pumps Australia with pressure performances of up to 400 bar (5,800 PSI)• Regulator with bypass• Anti-vibration mounts• A range of quality engines available including Diesel Yanmar, Kohler, and Petrol Honda engines• Heavy duty hose reel with roller feed and a 90-degree swivel• Standard duty hose reel with a 90-degree swivel• Non-marking high pressure hose complete with crimped fittings and rated to 5,000psi• Dual lance gun assembly rated to 5,000psi, stainless steel lances• High pressure nozzle and brass low pressure washdown nozzle• Turbo nozzle including stainless steel lance and easy change over connection

Trailed Pressure Washer Units

Pressure Washer Equipment



Product images are a close guide only and may not represent actual product

Features

- Durable UV stabilised white polyethylene tank with baffle
- Sight tube for easy viewing of content volume
- Heavy Duty Hot Dipped Galvanised Chassis
- Heavy Duty Pivot Jockey Wheel
- Land cruiser pattern wheels
- A range of quality engines available including 4.8HP Yanmar Diesel Motor and 6HP Honda Petrol engines
- PX10 Pump 3000 PSI 10LPM
- Hose Reel with 20m x 3/8 hose
- Lance with Bullet Turbo Nozzle
- License Inspection Compliance Plate
- Document Holder

Optional Upgrades

- Poly Bund Tray Mounted Under Engine
- Wheel Chocks
- Reflection Tape
- Fire Extinguisher & Bracket 9kg
- Yellow Wheel Nut Indicators
- Heavy Duty Poly Tool Box
- Spare Wheel & Bracket
- Baffle Balls (1 required per 40L)
- Heavy Duty Hose Reel - 30 x 3/8" Hose
- Wash Down Kit - Pump and Hose Reel with 4.8HP Diesel Engine or 6HP Petrol Engine

Trailed Pressure Washer Units - Petrol Powered

Code	Description (mm)
PWT1000T	1,000 Ltr Single Axle Pressure Washer - with GX200 6HP Honda Petrol Engine
PWT1000TT	1,000 Ltr Tandem Axle Pressure Washer - with GX200 6HP Honda Petrol Engine
PWT1500TT	1,500 Ltr Tandem Axle Pressure Washer - with GX200 6HP Honda Petrol Engine

Petrol Powered Pump Upgrade

Code	Description (mm)
MT-PWU-P09	9HP Honda Petrol Motor with PX13 3200PSI 13LPM Pump

Trailed Pressure Washer Units - Diesel Powered

Code	Description (mm)
PWT1000T-D	1,000 Ltr Single Axle Pressure Washer - with 4.8HP Yanmar Diesel Engine
PWT1000TT-D	1,000 Ltr Tandem Axle Pressure Washer - with 4.8HP Yanmar Diesel Engine
PWT1500TT-D	1,500 Ltr Tandem Axle Pressure Washer - with 4.8HP Yanmar Diesel Engine

Brake Systems

Code	Description (mm)
MT-SAMB	Single Axle Mechanical Override Brakes
MT-TAMB	Tandem Axle Mechanical Override Brakes
MT-TAEB	Tandem Axle Electric Brakes

Licensing Requirements

Code	Description (mm)
MT-LI	License Inspection (Includes Paperwork Ready For Registration)
MT-ILK	Indicator Lamp Kit

Hot/Cold Trailed Pressure Washer Units

Pressure Washer Equipment



Product images are a close guide only and may not represent actual product

Features

- Durable UV stabilised white polyethylene tank with baffle
- Sight tube for easy viewing of content volume
- Heavy-duty galvanised chassis
- Heavy-duty pivot jockey wheel
- Land cruiser pattern wheels
- Secure screw lid
- Xtreme 3000 with Lockable Battery Isolator
- Hose Reel with 20m x 3/8" hose
- Lance with Bullet Turbo Nozzle
- License Inspection Compliance Plate
- Document Holder

Optional Upgrades

- Poly Bund Tray Mounted Under Engine
- Wheel Chocks
- Reflection Tape
- Fire Extinguisher & Bracket 9kg
- Yellow Wheel Nut Indicators
- Heavy Duty Poly Tool Box
- Spare Wheel & Bracket
- Baffle Balls (1 required per 40L)
- Heavy Duty Hose Reel - 30 x 3/8" Hose
- Wash Down Kit - Pump and Hose Reel with 4.8HP Diesel Engine or 6HP Petrol Engine

Hot/Cold Trailed Pressure Washer Units

Code	Description (mm)
PWT1000TT-HC	1,000 Ltr Hot/Cold Tandem Axle Pressure Washer - with 3000 PSI 10HP Yanmar Diesel Engine
PWT1500TT-HC	1,500 Ltr Hot/Cold Tandem Axle Pressure Washer - with 3000 PSI 10HP Yanmar Diesel Engine

Brake Systems

Code	Description (mm)
MT-TAMB	Tandem Axle Mechanical Override Brakes
MT-TAEB	Tandem Axle Electric Brakes

Licensing Requirements

Code	Description (mm)
MT-LI	License Inspection (Includes Paperwork Ready For Registration)
MT-ILK	Indicator Lamp Kit

Diesel Storage Tanks

Diesel Storage and Transport



Features

- Complies to Australian Standards AS1940:2017 with an approved bund
- High quality diesel grade material
- UV resistant for Australian conditions
- Easy to install and relocate if required
- 50mm anti-splash and anti-static fill line with non-return valve
- 50mm low level outlet with lockable ball valve tap and camlock
- Level gauge for easy viewing of content volume
- Earth strap and rod

Diesel Storage Tanks

Code	Description (mm)
DDS5000	5,000Ltr Diesel Storage Tank (1800D x 2275H) - Excludes Pump
DDS10000	10,000Ltr Diesel Storage Tank (2450D x 2450H) - Excludes Pump

Diesel Dispensing Pumps

Diesel Storage and Transport



Features

- Quality Italian made pumps (12 and 240 volt options)
- Lockable pump cabinet to secure pump and nozzle
- 25mm auto shut-off nozzle
- Four digit flow meter
- Filter with 10 micron nominal rating and pressure gauge

Diesel Dispensing Pumps

Code	Description (mm)
DDS12V60PK	12V 60LPM Diesel Pump, 6m hose & 25mm auto shut off nozzle
DDS240V60PK	240V 60LPM Diesel Pump, 6m hose & 25mm auto shut off nozzle
DDS240V80PK	240V 80LPM Diesel Pump, 6m hose & 25mm auto shut off nozzle
DDS240V100PK	240V 100LPM Diesel Pump, 6m hose & 25mm auto shut off nozzle

 Please note that 240 volt pumps must be hard wired by a qualified electrician.

Trailed Diesel Transport Equipment

Diesel Storage and Transport



Features

- Purpose built for easy operation and smooth towing
- Landcruiser stud pattern hubs with spring suspension
- Durable tank manufactured with a specialised grade polyethylene formulated for use in diesel tanks
- 40mm diesel transfer pump coupled to Honda GX200 petrol recoil start engine (different models available)
- 25mm auto rewind hose reel
- 25mm auto shut-off nozzle
- Sight tube for easy view of content volume
- Galvanised chassis frame
- Custom mudflaps
- Heavy duty pivot jockey wheel
- UV stabilised for long life

Options

- Fully Bunded Chassis
- Tool/storage box
- Delivery hose reel
- Diesel transfer pump kits (refer to page 38)
- Spare Tyre Carrier
- Fire extinguisher
- Ball Baffle System® (refer to page 46)

Trailed Diesel Transport Equipment

Code	Description (mm)
DT600T	600 Ltr Single Axle Diesel Trailer Unit
DT800T	800 Ltr Single Axle Diesel Trailer Unit
DT1000T	1,000 Ltr Single Axle Diesel Trailer Unit
DT1000TT	1,000 Ltr Tandem Axle Diesel Trailer Unit
DT1500TT	1,500 Ltr Tandem Axle Diesel Trailer Unit
DT2000TT	2,000 Ltr Tandem Axle Diesel Trailer Unit
DT3000TT	3,000 Ltr Tandem Axle Diesel Trailer Unit

Brake Systems

Code	Description (mm)
MT-SAMB	Single Axle Mechanical Override Brakes
MT-TAMB	Tandem Axle Mechanical Override Brakes
MT-TAEB	Tandem Axle Electric Brakes

i 3,000L trailer is only available either unbraked or with electric brakes (mechanical brakes are not an option)

Licensing Requirements

Code	Description (mm)
MT-LICP	License Inspection Compliance Plate
MT-LI	License Inspection (Includes Paperwork Ready For Registration)
MT-ILK	Indicator Lamp Kit

Free Standing Diesel Transport Tanks

Diesel Storage and Transport

Features

- Integral foam filled baffle to reduce surge and increase stability**
- Flat based to allow transport flexibility
- Special grade polyethylene for diesel and coloured to denote "Diesel Only"
- UV stabilised for long outdoor life
- Mounting pins available
- Optional Ball Baffle System® available
- All models available with a galvanised mounting skid that can be moved with a forklift.
- Two inch filler hole with a cap, Two inch drum pump access fitting and splash resistant vent
- Calibrated for easy checking of content volume with a sight tube†



DT600FS

Free Standing Diesel Transport Tanks

Code	Description (mm)
DT400FS	400 Litre Free Standing Diesel Transport Tank - (1250L x 850W x 650H)
DT600FS	600 Litre Free Standing Diesel Transport Tank - (1300L x 980W x 710H)
DT800FS	800 Litre Free Standing Diesel Transport Tank - (1370L x 1100W x 860H)
DT1000FS	1,000 Litre Free Standing Diesel Transport Tank - (1355L x 1210W x 960H)
DT1500FS	1,500 Litre Free Standing Diesel Transport Tank - (1750L x 1250W x 1045H)
DT2000FS	2,000 Litre Free Standing Diesel Transport Tank - (1830L x 1400W x 1130H)
DT3000FS	3,000 Litre Free Standing Diesel Transport Tank - (2365L x 1460W x 1300H) - With Baffle Balls
DT5000FS	5,000 Litre Free Standing Diesel Transport Tank - (2425L x 1830W x 1708H) - With Baffle Balls
DT7000FS	7,000 Litre Free Standing Diesel Transport Tank - (3430L x 1850W x 1670H) - With Baffle Balls
DT10000FS	10,000 Litre Free Standing Diesel Transport Tank - (3600L x 2100W x 1890H) - With Baffle Balls
DT12500FS	12,500 Litre Free Standing Diesel Transport Tank - (4000L x 2200W x 2085H) - With Baffle Balls
DT17000FS	17,000 Litre Free Standing Diesel Transport Tank - (4450L x 2300W x 2350H) - With Baffle Balls

Free Standing Diesel Transport Tank Skid Frames

Code	Description (mm)
SKD-FS-400	Duralgalv Skid Frame To Suit 400L Free Standing Cartage Tank
SKD-FS-600	Duralgalv Skid Frame To Suit 600L Free Standing Cartage Tank
SKD-FS-800	Duralgalv Skid Frame To Suit 800L Free Standing Cartage Tank
SKD-FS-1000	Duralgalv Skid Frame To Suit 1000L Free Standing Cartage Tank
SKD-FS-1500	Duralgalv Skid Frame To Suit 1500L Free Standing Cartage Tank
SKD-FS-2000	Duralgalv Skid Frame To Suit 2000L Free Standing Cartage Tank - Fork Accessible
SKD-FS-3000	Duralgalv Skid Frame To Suit 3000L Free Standing Cartage Tank - Fork Accessible
SKD-FS-5000	Duralgalv Skid Frame To Suit 5000L Free Standing Cartage Tank - Fork Accessible
SKD-FS-7000	Duralgalv Skid Frame To Suit 7000L Free Standing Cartage Tank - Fork Accessible
SKD-FS-10000	Duralgalv Skid Frame To Suit 10000L Free Standing Cartage Tank - Fork Accessible
SKD-FS-12500	Duralgalv Skid Frame To Suit 12500L Free Standing Cartage Tank - Fork Accessible
SKD-FS-17000	Duralgalv Skid Frame To Suit 17000L Free Standing Cartage Tank - Fork Accessible

** Except 3000 & 5000 Litres Models

† Calibrations and sight tube readings should be taken as an approximate measure of volume only.

Diesel Transport Units

Diesel Storage and Transport



Features

- Durable UV stabilised polyethylene tank with specialised grade polyethylene suitable for diesel
- Baffle ball system for improved load stability
- Galvanised steel frame with fork access and platform for pumping equipment and plumbing
- 40mm cast iron diesel transfer pump coupled to Honda GX200 petrol recoil start engine
- 32mm filter with pressure gauge
- 25mm auto rewind hose reel (with 15m of hose)
- 25mm auto shut-off nozzle and nozzle holder
- 50mm fill line (independent of pump) including non-return valve
- Sight tube for easy view of content volume
- Ability to fill tank through pump
- Steel bunding optional

Diesel Transport Units

Code	Description (mm)
DTU2000	2,000L Diesel Transport Unit (2795L x 1400W x 1230H)
DTU3000	3,000L Diesel Transport Unit (3220H x 1538W x 1450H)
DTU5000	5,000L Diesel Transport Unit (3180L x 1836W x 1858H)
DTU7000	7,000L Diesel Transport Unit (4240L x 1850W x 1820H)
DTU10000	10,000L Diesel Transport Unit (4420L x 2110W x 2150H)
DTU12500	12,500L Diesel Transport Unit (4555L x 2200W x 2235H)
DTU17000	17,000L Diesel Transport Unit (5485L x 2345W x 2500H)

Diesel Transport Unit Accessories

Code	Description (mm)
MT-DHA40-U	40mm Auto Rewind Hose Reel - Upgrade from 25mm
MT-ASN40-U	40mm Auto Shut-Off Nozzle - Upgrade From 25mm
MT-FM40	40mm BSP Port Four Digit Flow Meter
MT-FM4	25mm BSP Port Four Digit Flow Meter



Diesel Transfer Products

Diesel Storage and Transport



Features

Diesel pump kits for refuelling operations from drums, tanks or mobile refuelling carts. Robust proven pump kits for diesel refuelling operations. Designed to provide effortless refuelling for agricultural operations.

Diesel Transfer Products

Code	Description
MT-12A45K	12 Volt Pump Kit With Auto Shut-Off Nozzle - 45Lpm
MT-12A60K	12 Volt Pump Kit With Auto Shut-Off Nozzle - 60Lpm
MT-12AHF	12 Volt Hi-Flo Pump Kit With Auto Shut-Off Nozzle - 85Lpm
MT-FM4	25mm BSP Port 4 Digit Flow Meter, Manual
MT-FMD	25mm BSP Electronic Inline Digital Flow Meter For Diesel
MT-FM40	40mm BSP Port 4 Digit Flow Meter, Manual
MT-DHA25	25mm Auto Rewind Diesel Hosereel
MT-ASN25	25mm Auto Shut-Off Nozzle
MT-ASN40	40mm Auto Shut-Off Nozzle



MT-12AHF

- 85 L/min open flow
- 12 volt DC/35 amp pump
- Four metres battery cable with alligator clips
- Easy to use volumetric self priming
- One inch BSP female ports
- Four metres of 25mm diesel delivery hose
- Auto shutoff nozzle with swivel



MT-12A60K

- 60L/min open flow
- Four metres of 25mm anti-static delivery hose with anti-kink spring + auto shut-off nozzle
- Four metres of power cable
- Two metres of 25mm suction hose
- Easy clean suction strainer



MT-12A45K

- 45L/min open flow
- Four metres of 20mm anti-static delivery hose with anti-kink spring + auto shut-off nozzle
- Four metres of power cable
- Two metres of 20mm suction hose
- On/off switch on pump



MT-FM4

- One inch BSP port four digit flow meter with flow range from 20 - 120 LPM.
- Four digit resettable totaliser. Eight digit non resettable cumulative total.
- For use with diesel fuel in pump or gravity applications.



MT-FMD

- One inch BSP electronic inline turbine meter with compact display ideal for fitting at fuel nozzles.
- Flow range ten to 120 LPM maximum, working pressure 300 PSI. Accuracy $\pm 1\%$.



MT-DHA25

- Hose reel with 15m x 25mm hose. One inch BSP inlet/outlet. Air/water/diesel.
- 300 PSI working pressure.



MT-ASN25

- One inch BSP port
- Auto shut-off

Chemical Resistance Chart

This Chemical Resistance chart is to be used as a guide to assist you in determining the suitability of LLDPE Rotathene® for storing the chemical indicated.

Chemical Storage is a critical application which requires the optimum processing of the part.

Many chemicals can attack, degrade and cause swelling in LLDPE. Other agents (e.g. detergents, alcohols, oils etc) may cause cracking of the LLDPE especially when the part is under stress.

The following key has been used in this table:

•	indicates satisfactory , negligible attack
-	indicates some attack or absorption (may be considered where alternative materials are unsatisfactory)
	indicates unsatisfactory , extensive attack (polyethylene should not be used for any applications where these environments are present).
o	indicates possibility of 'environmental stress cracking'

NOTE:

Information provided by Coerco Pty Ltd with respect to chemical resistance is to be used as a guide for application and is not to be taken as a guarantee of ultimate field performance.

Satisfactory chemical resistance does not necessarily imply freedom from environmental stress cracking or chemical oxidation.

The ultimate serviceability of a chemical tank is subject to factors outside of the control of Coerco Pty Ltd. These factors include processing conditions, design, installation, operating conditions and environment which may all compromise the supplied resin.

This data is supplied in good faith and is not the result of evaluations conducted by Coerco Pty Ltd.

Chemical Resistance Chart

Chemical	Concentration (% by weight in aqueous solution)	Temperature		Environmental cracking hazard
		20°C	60°C	
Acetaldehyde	100	-	I	o
Acetic acid	10 60 Glacial	• • -	• • I	• •
Acetone	100	I	I	o
Alcohol, amyl		•		o
Alcohol, butyl		•		o
Alcohol, cetyl		•		o
Alcohol, ethyl	40 100	• I		o
Alcohol, furfuryl		I		o
Alcohol, methyl	6 100	• -		
Alum		•	•	
Aluminium chloride		•	•	
Aluminium fluoride		•	•	
Aluminium hydroxide		•	•	
Aluminium sulphate		•	•	
Ammonia	0.88 SG Dry Gas	•	•	
Ammonium bicarbonate		•	•	
Ammonium carbonate		•	•	
Ammonium chloride		•	•	
Ammonium hydrosulphide		•	•	
Ammonium hydroxide		•	•	
Ammonium metaphosphate		•	•	
Ammonium nitrate		•	•	
Ammonium persulphate		•	•	
Ammonium phosphate		•	•	
Ammonium sulphate		•	•	
Ammonium sulphide		•	•	
Ammonium thiocyanate		•	•	
Amyl acetate		I		o
Aniline		I		
Aniline hydrochloride		I		
Aniline sulphate		I		
Animal oils		-	I	o
Antimony pentachloride		•	•	
Antimony trichloride		•	•	
"Arcton" 6		-		o
Barium carbonate		•	•	
Barium chloride		•	•	
Barium hydroxide		•	•	
Barium sulphate		•	•	

Chemical	Concentration (% by weight in aqueous solution)	Temperature		Environmental cracking hazard
		20°C	60°C	
Barium sulphide		•	•	
Beer		•	•	
Benzaldehyde	100	I		o
Benzene		I		o
Benzene sulphonic acid		I		
Benzyl alcohol		I		
Bismuth carbonate		•	•	
Borax		•	•	
Boric acid		•	•	
Boron trifluoride		•		
Brine		•	•	
Bromine	Dry Gas	I		
Calcium bisulphite		•	•	
Calcium carbonate		•	•	
Calcium chlorate		•	•	
Calcium chloride		•	•	
Calcium hydroxide		•	•	
Calcium hypochlorite		•		
Calcium nitrate		•		
Calcium phosphate		•		
Calcium sulphate		•		
Camphor oil		I		o
Carbon dioxide		•		
Carbon disulphide		I		
Carbon monoxide		•		
Carbon tetrachloride		I		
Castor oil		I		o
Chloral hydrate		I		
Chlorine	Dry Gas Liquid	- I	I	
Chlorine water	2 Sat. Solution	• •	• -	
Chloroform		I		o
Chlorosulphonic acid		I	I	
Chrome alum		•	•	
Chromic acid	Planting solution	•	•	
Cider		•		
Citric acid		•	•	
Copper cyanide		•	•	
Copper fluoride		•	•	
Copper nitrate		•	•	
Copper sulphate		•	•	
Creosote		I		o

Chemical Resistance Chart

Chemical	Concentration (% by weight in aqueous solution)	Temperature		Environmental cracking hazard
		20°C	60°C	
Cresols		I		o
Cresylic acid (crude)		I		
Cupric chloride		•	•	
Cupric nitrate		•	•	
Cupric sulphate		•	•	
Cyclohexanol		I		
Cyclohexanone		I		
Detergents, synthetic (normal user conditions)		•	•	o
Developers, photographic		•	•	
Dextrose		•	•	
Dibutyl phthalate		-	I	o
Diethyl ether		I	I	o
Diethyl phthalate		-	I	o
Disodium phosphate		•		
Emulsifiers	All conc.	•	•	
Emulsions, photographic		•		
Ether		I		o
Ethyl acetate		-	I	
Ethylene dichloride		I		o
Ethylene glycol		•		
Ferric chloride		•		
Ferric sulphate		•		
Ferrous ammonium citrate		•	•	
Ferrous sulphate		•	•	
Fixing solution, photographic		•	•	
Fluorine		-	I	
Fluorsilicic acid		•		
Formaldehyde	40	•	•	
Formic acid	3	•	•	
	10	•	•	
	25	•	•	
	50	•	•	
	100	•	•	
Fruit pulp		•		
Furfuryl alcohol		I		o
Glucose		•		
Glycerine		•	•	
Grape sugar		•	•	
Hydrobromic acid	50 100	•	•	
Hydrochloric acid	10	•	•	
Hydrochloric acid	22 Conc.	•	•	
		•	•	

Chemical	Concentration (% by weight in aqueous solution)			Environmental cracking hazard
		20°C	60°C	
Hydrofluoric acid	4 40 50 Conc.	•	•	
		•	•	
		•	•	
		•	-	
Hydrogen		•	•	
Hydrogen peroxide	3 (10 vol.) 12 (40 vol.) 30 (100 vol.) 90 and above	•		
		•		
		•		
		•		
Hydrogen sulphide		•		
Hydroquinone		•		
Hypochlorous acid		-	I	
Lactic acid	10 100	•	•	
		•	•	
Lead acetate		•		
Lead arsenate		•		
Lead tetra-ethyl		•		
Linseed oil		-	I	o
Magnesium carbonate		•	•	
Magnesium chloride		•	•	
Magnesium hydroxide		•	•	
Magnesium nitrate		•	•	
Magnesium sulphate		•	•	
Maleic acid	25 50 Conc.	•	•	
Magnesium sulphate		•	•	
Mercuric chloride		•	•	
Mercuric cyanide		•	•	
Mercury		•		
Metallic soaps		•		o
Methyl acetate		I	I	
Methyl bromide		-	I	
Methyl chloride		I	I	
Methyl ethyl ketone		-	I	o
Milk		•		
Mineral oils		-	I	o
Monochlorobenzene		I	I	
Nickel chloride		•	•	
Nickel nitrate		•	•	
Nickel sulphate		•	•	
Nitric acid	5 10 25	•	•	Oxidising agent
		•	•	
		•	•	
		•	•	

Chemical Resistance Chart

Chemical	Concentration (% by weight in aqueous solution)	Temperature		Environmental cracking hazard
		20°C	60°C	
Nitric Acid	50 70 95	- - I	I I I	Oxidising agent
Nitrobenzene		-	I	o
Oxalic acid		•	•	
Oxygen		•		
Paraffin		-	I	
Petrol		I	I	
Petroleum ether		I	I	
Phenol		I		o
Phosphoric acid	25 30 50	• • •	• • •	
Phosphorus oxychloride		I	I	
Phosphorus pentoxide		•	•	
Phosphorus trichloride		•		
Photographic developers		•	•	
Photographic emulsions		•		
Photographic fixing solutions		•	•	
Picric acid	1 10% x./ alcohol	• •		
Potassium bicarbonate		•	•	
Potassium bichromate		•	•	
Potassium bisulphate		•	•	
Potassium bisulphite		•	•	
Potassium borate		•	•	
Potassium bromate		•	•	
Potassium bromide		•	•	
Potassium carbonate		•	•	
Potassium chlorate		•	•	
Potassium chloride		•	•	
Potassium chromate		•	•	
Potassium cuprocyanide		•	•	
Potassium cyanide		•	•	
Potassium dichromate		•	•	
Potassium ferricyanide		•	•	
Potassium ferrocyanide		•	•	
Potassium fluoride		•	•	
Potassium hydroxide	1 10 Conc.	• • •	• • •	o
Potassium nitrate		•	•	
Potassium perborate		•	•	

Chemical	Concentration (% by weight in aqueous solution)	Temperature		Environmental cracking hazard
		20°C	60°C	
Potassium permanganate		•	•	
Potassium persulphate		•	•	
Potassium phosphate		•	•	
Potassium sulphate		•	•	
Potassium sulphide		•	•	
Potassium thiosulphate		•	•	
Salicylic acid		•	•	
Sea water		•	•	
Silicone fluids		-		o
Silver cyanide		•	•	
Silver nitrate		•	•	
Soap solution		•	•	o
Sodium acetate		•	•	
Sodium aluminate		•	•	
Sodium benzoate		•	•	
Sodium bicarbonate		•	•	
Sodium bisulphate		•	•	
Sodium bisulphite		•	•	
Sodium borate		•	•	
Sodium bromide		•	•	
Sodium carbonate		•	•	
Sodium chlorate		•	•	
Sodium chloride		•	•	
Sodium cyanide		•	•	
Sodium ferricyanide		•	•	
Sodium ferrocyanide		•	•	
Sodium fluoride		•	•	
Sodium hydroxide	1 10 40	• • •	• • •	o
Sodium hyposulphates	Conc.	•	•	
Sodium hypochlorite	15% chlorine	•	•	
Sodium metaphosphate		•	•	
Sodium nitrate		•	•	
Sodium nitrite		•	•	
Sodium peroxide		•	•	
Sodium phosphate		•	•	
Sodium silicate		•	•	
Sodium sulphate		•	•	
Sodium sulphide	25 Conc.	•	•	
Sodium sulphite		•	•	
Sodium thiosulphate		•	•	
Soft soap		•	•	o

Chemical Resistance Chart

Chemical	Concentration (% by weight in aqueous solution)	Temperature		Environmental cracking hazard
		20°C	60°C	
Stannic chloride		•	•	
Stannous chloride		•	•	
Starch		•	•	
Stearic acid		•	•	
Sucrose		•	•	
Sulphur	Colloidal	•		
Sulphur dioxide	Dry gas	•		
	Moist	•		
Sulphuric acid	10	•	•	
	20	•	•	
	30	•	•	
	40	•	•	
	50	•	•	
	60	•	•	
	70	•	-	
	95	-		
	98	-		
	Fuming			
Surface-active agents (Emulsifiers, synthetic detergents and wetting agents)	Normal dilutions	•	•	o
Tallow		•		
Tannic acid		•	•	
Tanning extracts	10	•	•	
Tartaric acid		•	•	
Toluene				
Transformer oil		H		o
Trichloroethylene				o
Tricresyl phosphate				o
Triethanolamine		-		o
Trisodium phosphate		•	•	
Turpentine		-		o
Vegetable oils		-		o
Vinegar		•	•	
Water		•	•	
Wetting agents	Normal dilutions	•	•	o
Whey		•		
Wines and spirits		•		o
Xylene				
Yeast		•		
Zinc chloride		•	•	
Zinc oxide		•	•	
Zinc sulphate		•	•	