

600LTR SUMP BASED CARTAGE TANK

MATERIAL:
LLDPE MATERIAL DESIGNED SPECIFICALLY FOR ROTATIONAL MOULDING APPLICATIONS DELIVERING A HIGH ESCR, CHEMICAL RESISTANCE, STIFFNESS AND TOUGHNESS WHICH IS UV STABILISED TO PROVIDE PROLONGED OUTDOOR PROTECTION IN HARSH AUSTRALIAN CONDITIONS.

DIMENSIONS:
DIMENSIONS MAY VARY SLIGHTLY DUE TO THE SHRINKAGE NATURE OF POLYETHYLENE.

355mm
SCREW LID

TOP VIEW

6 O'CLOCK VIEW

3 O'CLOCK VIEW

12 O'CLOCK VIEW

ISOMETRIC VIEW

BARE TANK WEIGHT: 50kg

02	UPDATE DRAWING TEMPLATE	KD	RB	MJ	05.09.23
01	FOR CONSTRUCTION	SA			09.02.22
REV	DESCRIPTION	DWN	CHK	APP	DATE



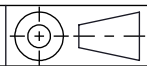
coerco
Engineered Project Solutions

MATERIAL	LOW DENSITY POLYETHYLENE
COLOUR/ FINISH	POLISHED
S.G.	

DWN	KD
CHK	RB
APP	MJ
SCALE: NTS	

STOCK CODE	ST600
PRODUCT	600LTR SUMP BASED TANK

PROPRIETARY. Neither this document nor its contents may be used or reproduced in any manner without the written authorisation of COERCO. Unless otherwise noted all dimensions are in millimetres.

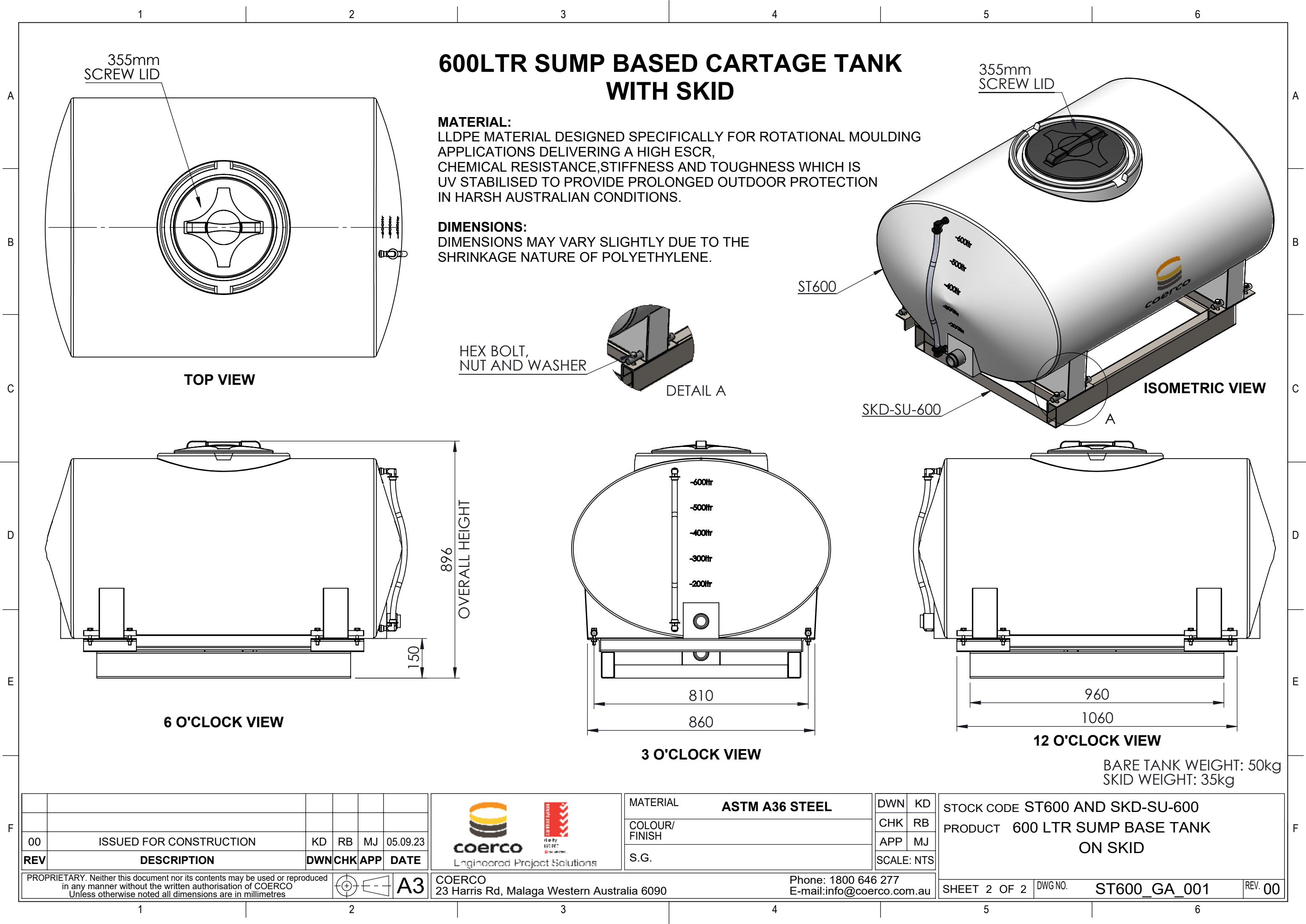


A3

COERCO
23 Harris Rd, Malaga Western Australia 6090

Phone: 1800 646 277
E-mail: info@coerco.com.au

SHEET 1 OF 2	DWG NO.	ST600_GA_001	REV. 02
--------------	---------	--------------	---------



600LTR SUMP BASED CARTAGE TANK WITH SKID

MATERIAL:
LLDPE MATERIAL DESIGNED SPECIFICALLY FOR ROTATIONAL MOULDING APPLICATIONS DELIVERING A HIGH ESCR, CHEMICAL RESISTANCE, STIFFNESS AND TOUGHNESS WHICH IS UV STABILISED TO PROVIDE PROLONGED OUTDOOR PROTECTION IN HARSH AUSTRALIAN CONDITIONS.

DIMENSIONS:
DIMENSIONS MAY VARY SLIGHTLY DUE TO THE SHRINKAGE NATURE OF POLYETHYLENE.

HEX BOLT,
NUT AND WASHER

DETAIL A

ST600

SKD-SU-600

ISOMETRIC VIEW

BARE TANK WEIGHT: 50kg
SKID WEIGHT: 35kg

00	ISSUED FOR CONSTRUCTION	KD	RB	MJ	05.09.23
REV	DESCRIPTION	DWN	CHK	APP	DATE



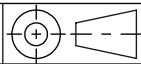
coerco
Engineered Project Solutions

MATERIAL	ASTM A36 STEEL
COLOUR/ FINISH	
S.G.	

DWN	KD
CHK	RB
APP	MJ
SCALE:	NTS

STOCK CODE	ST600 AND SKD-SU-600
PRODUCT	600 LTR SUMP BASE TANK ON SKID

PROPRIETARY. Neither this document nor its contents may be used or reproduced in any manner without the written authorisation of COERCO
Unless otherwise noted all dimensions are in millimetres



A3

COERCO
23 Harris Rd, Malaga Western Australia 6090

Phone: 1800 646 277
E-mail: info@coerco.com.au

SHEET 2 OF 2	DWG NO.	ST600_GA_001	REV. 00
--------------	---------	--------------	---------