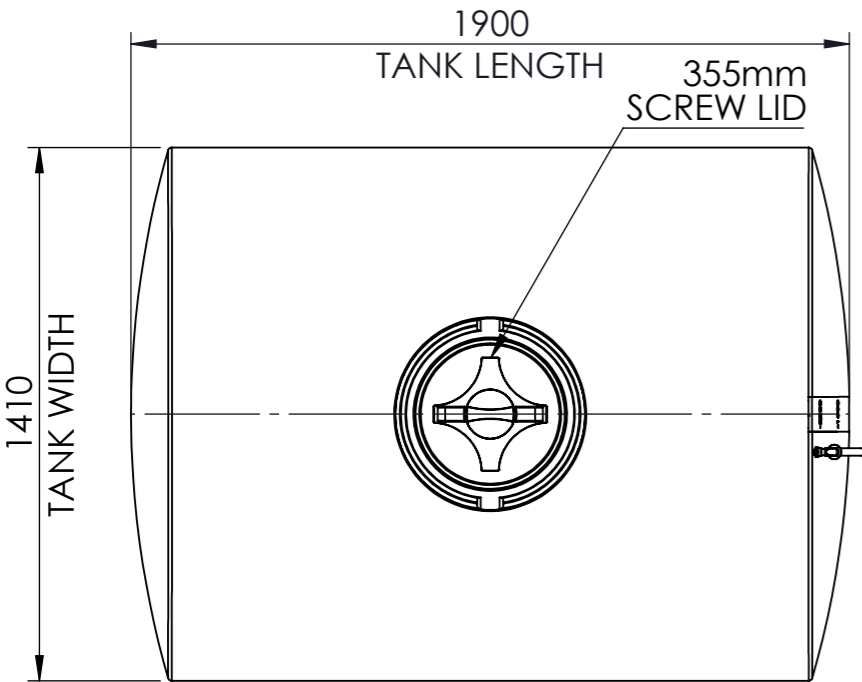


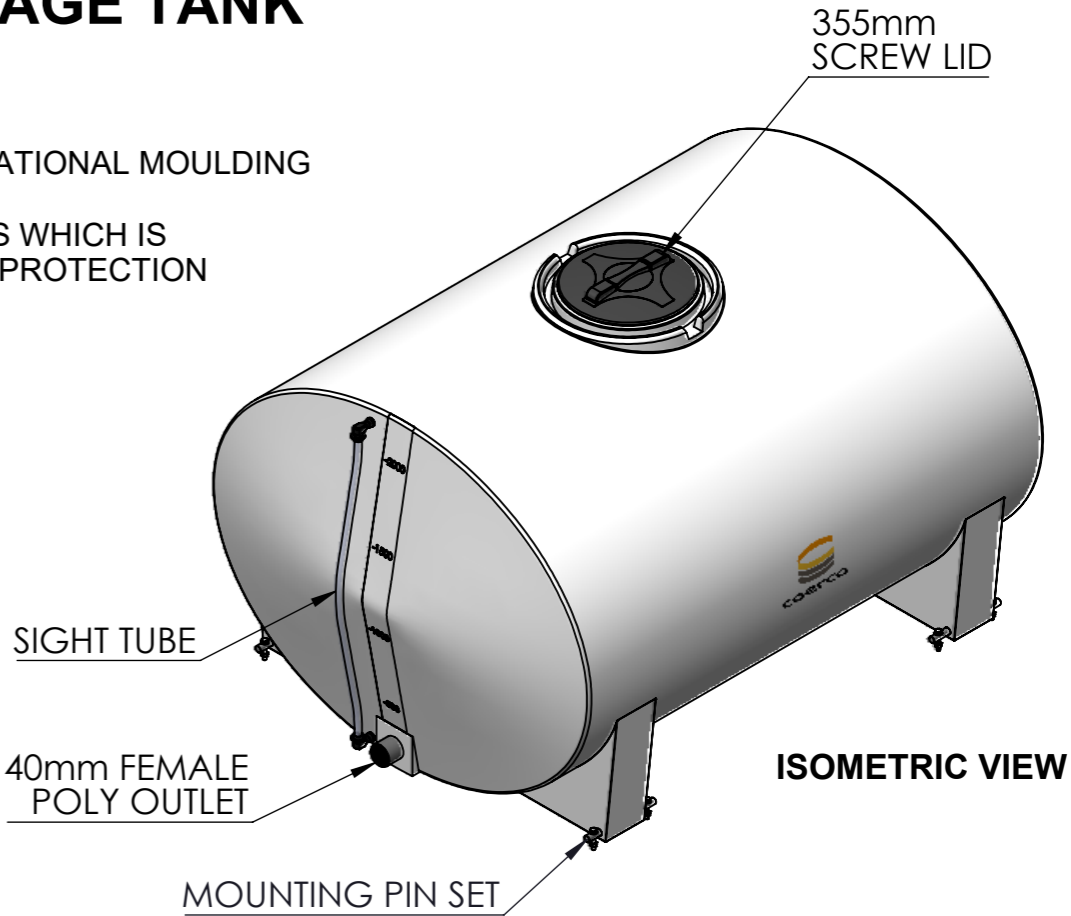
2,000LTR SUMP BASED CARTAGE TANK

MATERIAL:
LLDPE MATERIAL DESIGNED SPECIFICALLY FOR ROTATIONAL MOULDING APPLICATIONS DELIVERING A HIGH ESCR, CHEMICAL RESISTANCE, STIFFNESS AND TOUGHNESS WHICH IS UV STABILISED TO PROVIDE PROLONGED OUTDOOR PROTECTION IN HARSH AUSTRALIAN CONDITIONS.

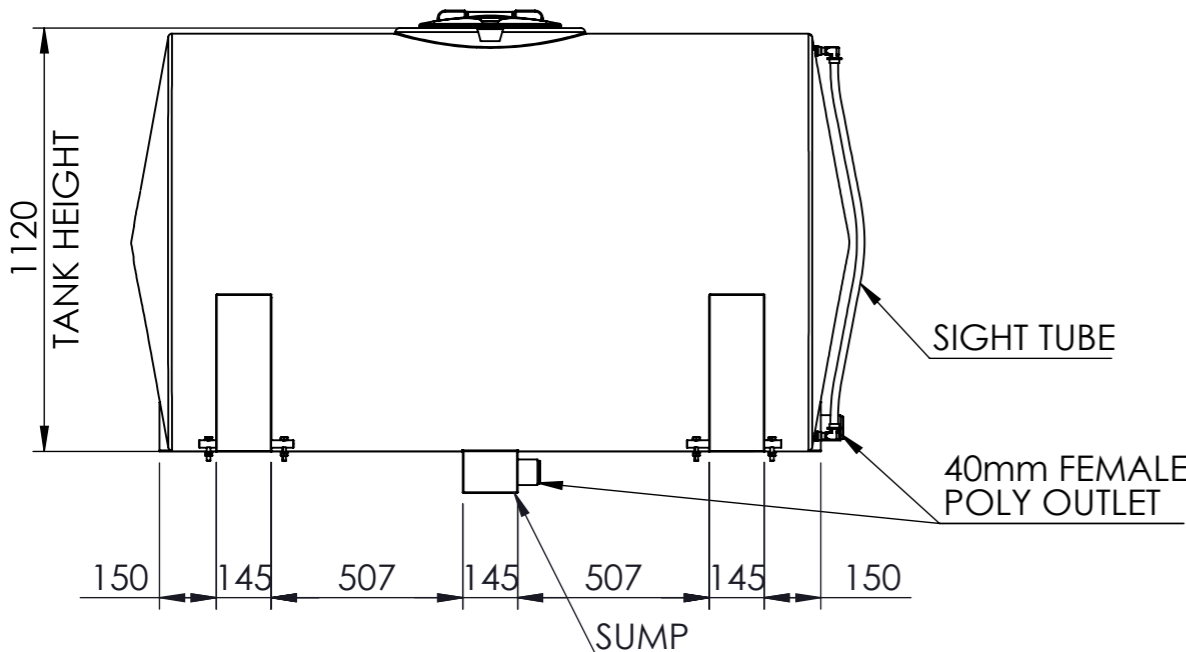
DIMENSIONS:
DIMENSIONS MAY VARY SLIGHTLY DUE TO THE SHRINKAGE NATURE OF POLYETHYLENE.



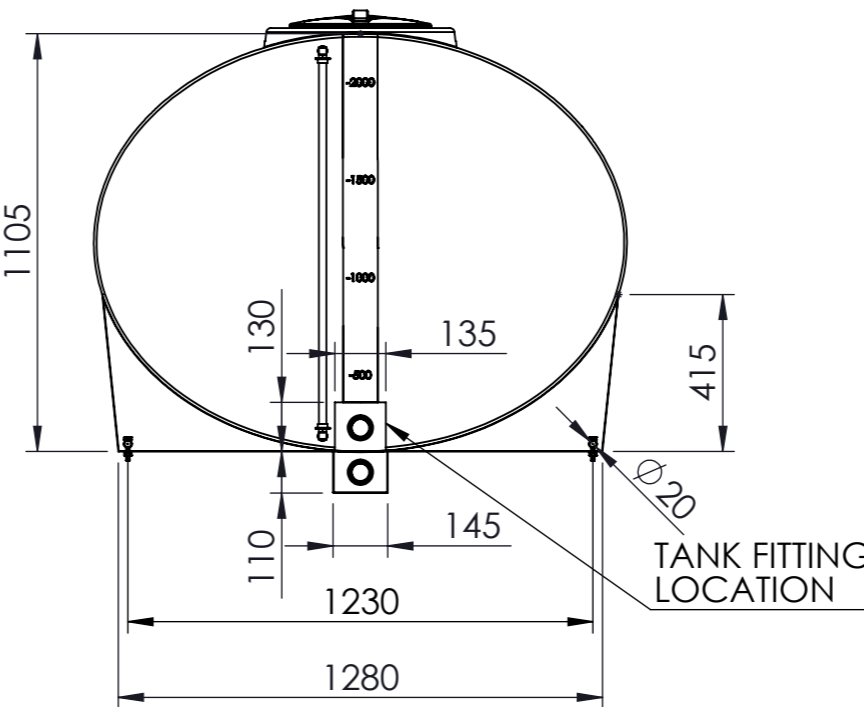
TOP VIEW



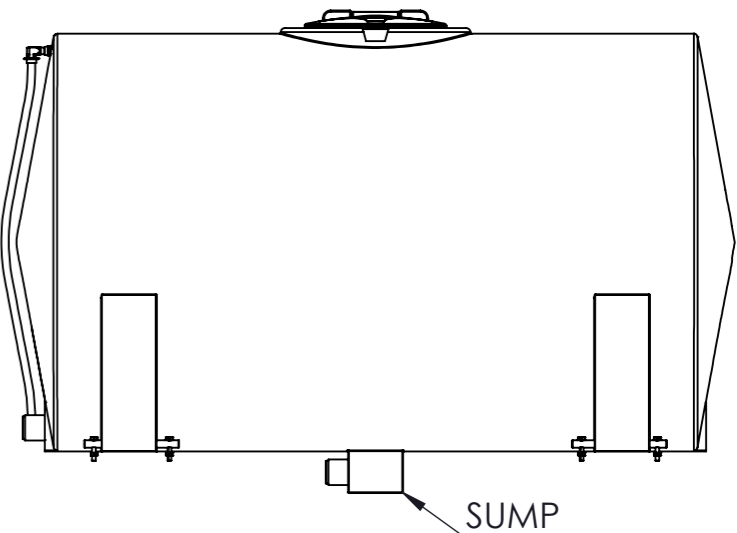
ISOMETRIC VIEW



6 O'CLOCK VIEW



3 O'CLOCK VIEW



12 O'CLOCK VIEW

BARE TANK WEIGHT: 100kg

REV	DESCRIPTION	DWN	CHK	APP	DATE
02	UPDATE DRAWING TEMPLATE	KD	RB	MJ	07.09.23
01	FOR CONSTRUCTION	SA			18.02.22

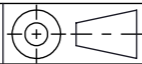


MATERIAL	LOW DENSITY POLYETHYLENE
COLOUR/ FINISH	POLISHED
S.G.	

DWN	KD
CHK	RB
APP	MJ
SCALE:	NTS

STOCK CODE	ST2000
PRODUCT	2000 LTR SUMP BASED TANK

PROPRIETARY. Neither this document nor its contents may be used or reproduced in any manner without the written authorisation of COERCO. Unless otherwise noted all dimensions are in millimetres.



A3

COERCO
23 Harris Rd, Malaga Western Australia 6090

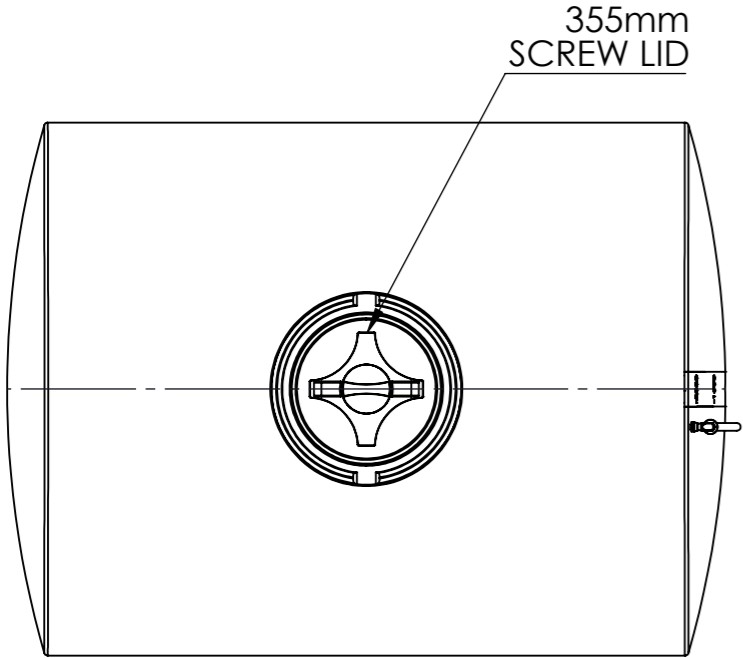
Phone: 1800 646 277
E-mail: info@coerco.com.au

SHEET 1 OF 2	DWG NO.	ST2000_GA_001	REV. 02
--------------	---------	---------------	---------

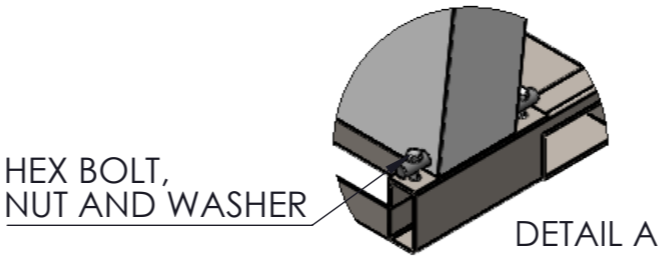
2,000LTR SUMP BASED CARTAGE TANK WITH SKID

MATERIAL:
LLDPE MATERIAL DESIGNED SPECIFICALLY FOR ROTATIONAL MOULDING APPLICATIONS DELIVERING A HIGH ESCR, CHEMICAL RESISTANCE, STIFFNESS AND TOUGHNESS WHICH IS UV STABILISED TO PROVIDE PROLONGED OUTDOOR PROTECTION IN HARSH AUSTRALIAN CONDITIONS.

DIMENSIONS:
DIMENSIONS MAY VARY SLIGHTLY DUE TO THE SHRINKAGE NATURE OF POLYETHYLENE.

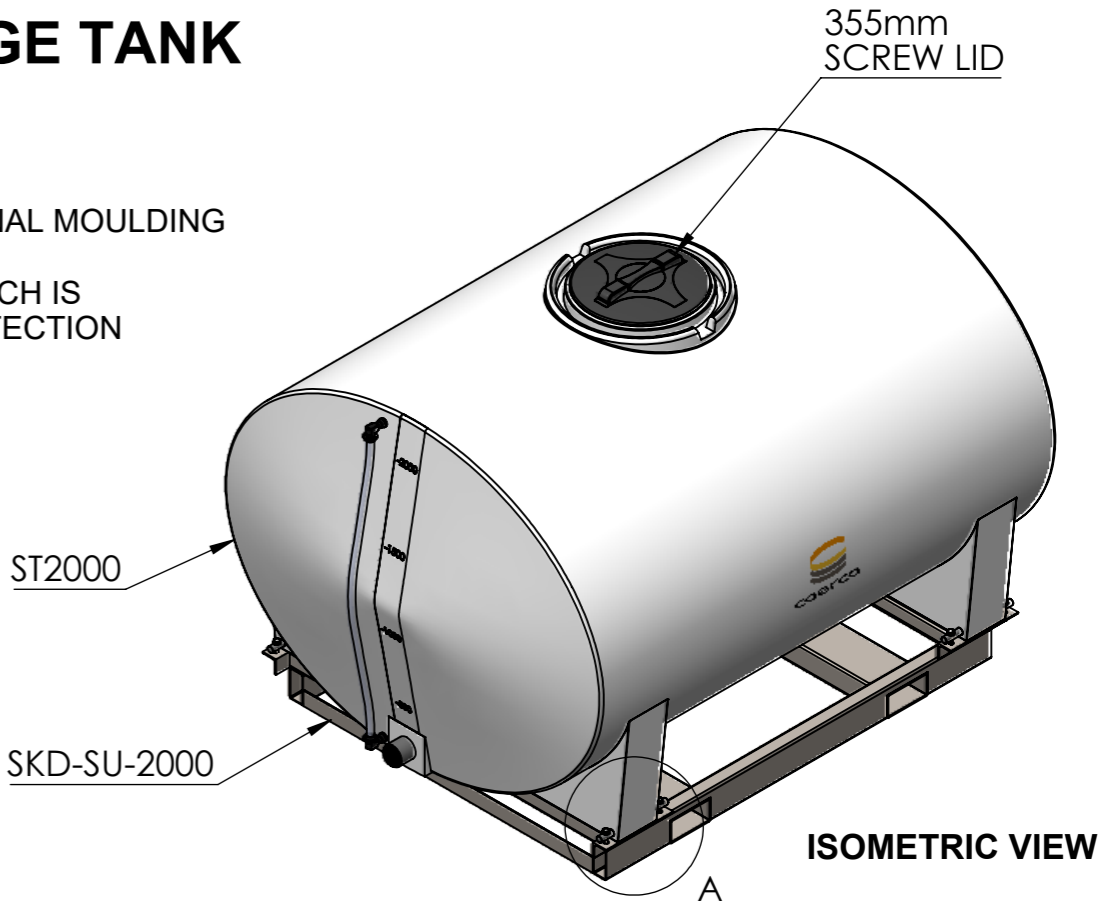


TOP VIEW

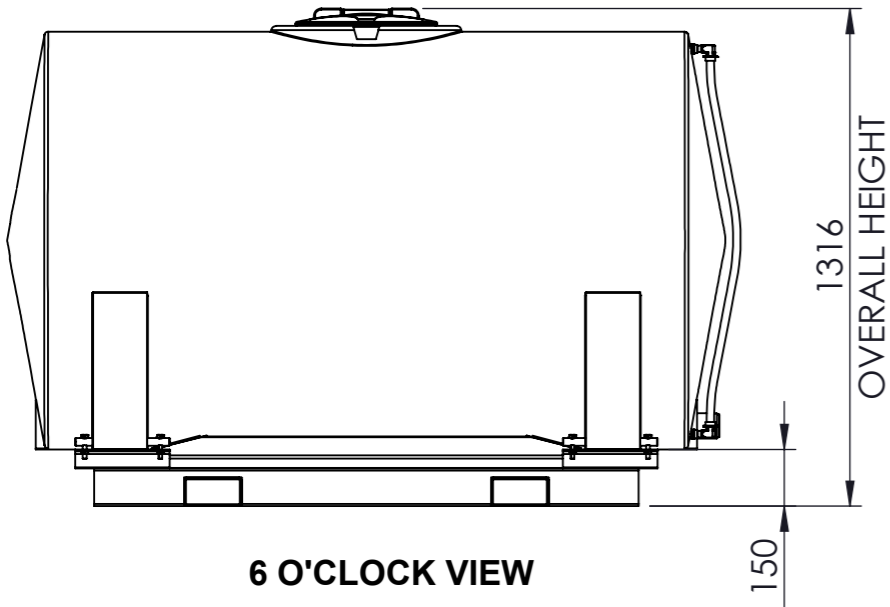


HEX BOLT, NUT AND WASHER

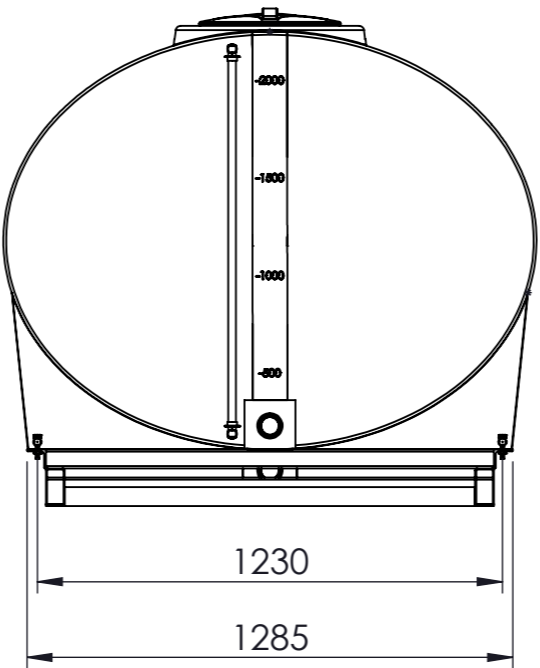
DETAIL A



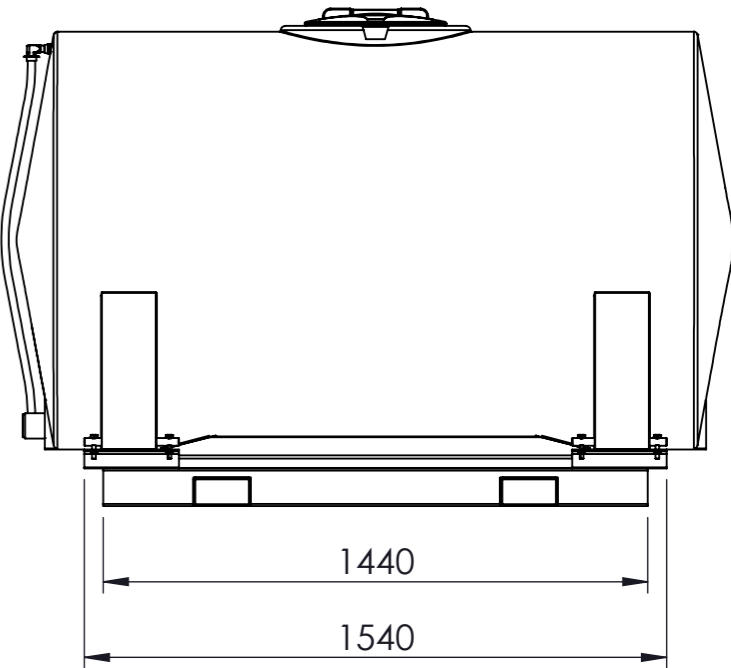
ISOMETRIC VIEW



6 O'CLOCK VIEW



3 O'CLOCK VIEW



12 O'CLOCK VIEW

BARE TANK WEIGHT: 100kg
SKID WEIGHT: 102kg

REV	DESCRIPTION	DWN	CHK	APP	DATE
00	ISSUED FOR CONSTRUCTION	KD	RB	MJ	07.09.23

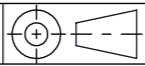


MATERIAL	ASTM A36 SEEL
COLOUR/ FINISH	GALV
S.G.	

DWN	KD
CHK	RB
APP	MJ
SCALE:	NTS

STOCK CODE	ST2000 AND SKD-FS-2000
PRODUCT	2000 LTR SUMP BASED TANK ON SKID

PROPRIETARY. Neither this document nor its contents may be used or reproduced in any manner without the written authorisation of COERCO Unless otherwise noted all dimensions are in millimetres



A3

COERCO
23 Harris Rd, Malaga Western Australia 6090

Phone: 1800 646 277
E-mail: info@coerco.com.au

SHEET 2 OF 2	DWG NO.	ST2000_GA_001	REV. 00
--------------	---------	---------------	---------