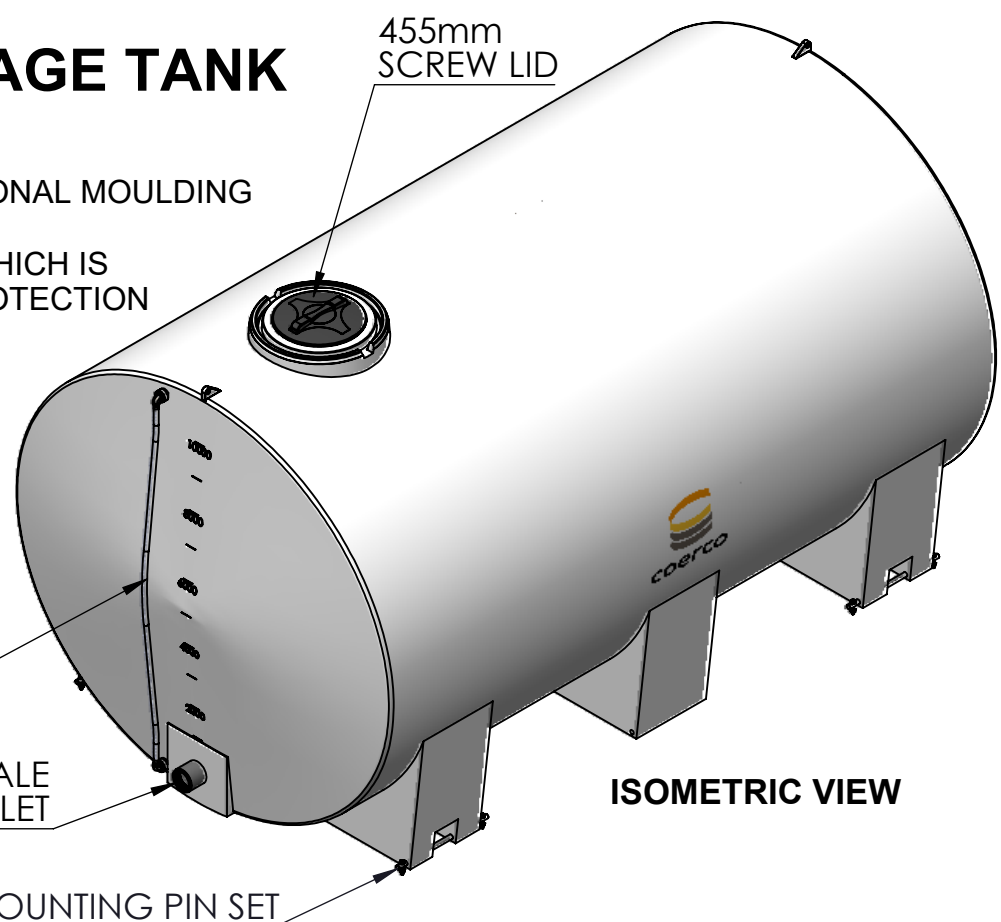


# 10,000LTR SUMP BASED CARTAGE TANK

**MATERIAL:**  
LLDPE MATERIAL DESIGNED SPECIFICALLY FOR ROTATIONAL MOULDING APPLICATIONS DELIVERING A HIGH ESCR, CHEMICAL RESISTANCE, STIFFNESS AND TOUGHNESS WHICH IS UV STABILISED TO PROVIDE PROLONGED OUTDOOR PROTECTION IN HARSH AUSTRALIAN CONDITIONS.

**DIMENSIONS:**  
DIMENSIONS MAY VARY SLIGHTLY DUE TO THE SHRINKAGE NATURE OF POLYETHYLENE.



TOP VIEW

ISOMETRIC VIEW

6 O'CLOCK VIEW

3 O'CLOCK VIEW

12 O'CLOCK VIEW

BARE TANK WEIGHT: 475kg

REV	DESCRIPTION	DWN	CHK	APP	DATE
02	UPDATE DRAWING TEMPLATE	KD	RB	MJ	08.09.23
01	FOR CONSTRUCTION	SA			18.02.22



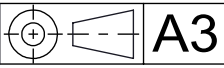
**coerco**  
Engineered Project Solutions

MATERIAL	LOW DENSITY POLYETHYLENE
COLOUR/ FINISH	POLISHED
S.G.	

DWN	KD
CHK	RB
APP	MJ
SCALE:	NTS

STOCK CODE	ST10000
PRODUCT	10000 LTR SUMP BASE TANK

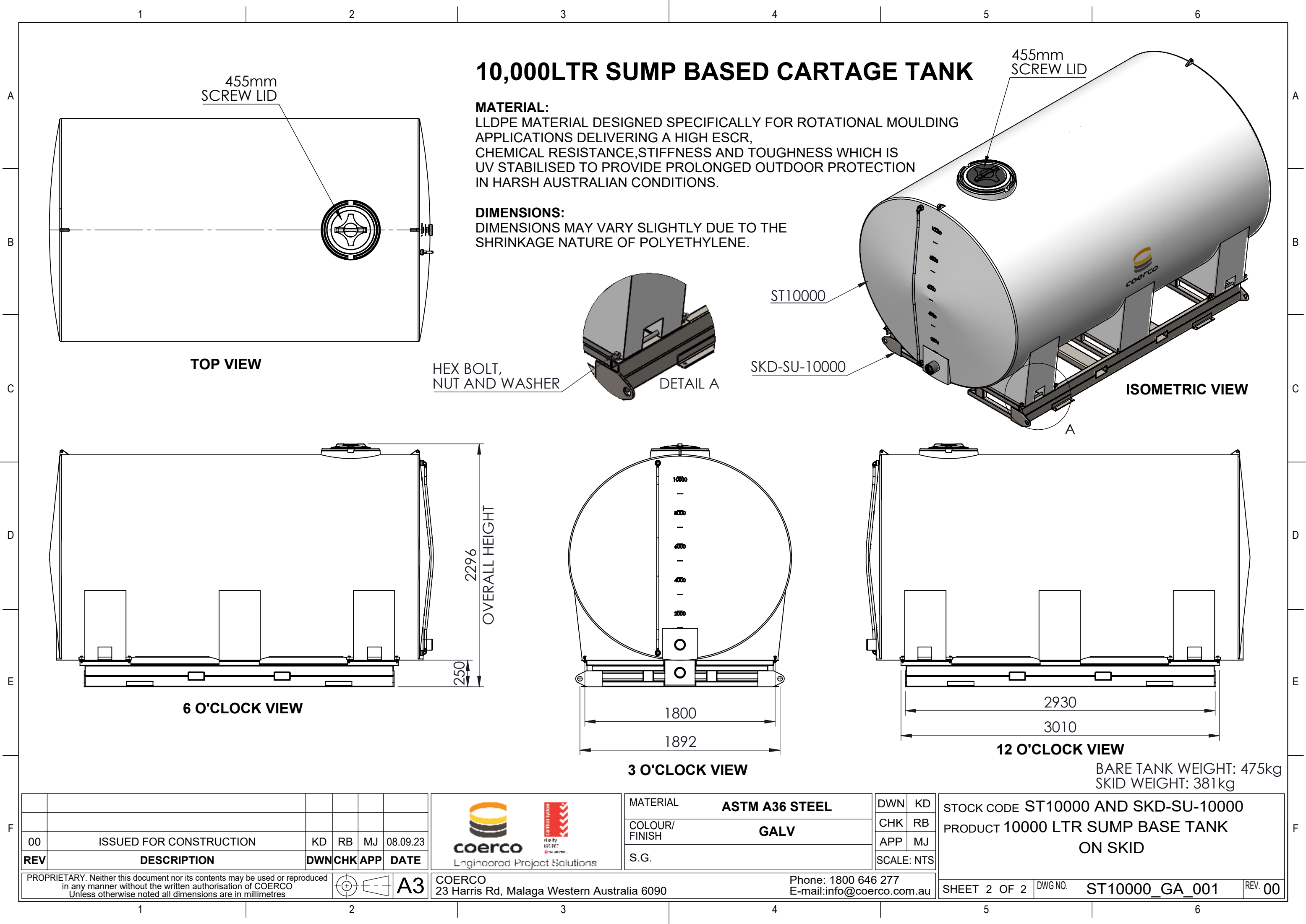
PROPRIETARY. Neither this document nor its contents may be used or reproduced in any manner without the written authorisation of COERCO Unless otherwise noted all dimensions are in millimetres



COERCO  
23 Harris Rd, Malaga Western Australia 6090

Phone: 1800 646 277  
E-mail: info@coerco.com.au

SHEET 1 OF 2	DWG NO.	ST10000_GA_001	REV.	02
--------------	---------	----------------	------	----



10,000LTR SUMP BASED CARTAGE TANK

**MATERIAL:**  
LLDPE MATERIAL DESIGNED SPECIFICALLY FOR ROTATIONAL MOULDING APPLICATIONS DELIVERING A HIGH ESCR, CHEMICAL RESISTANCE, STIFFNESS AND TOUGHNESS WHICH IS UV STABILISED TO PROVIDE PROLONGED OUTDOOR PROTECTION IN HARSH AUSTRALIAN CONDITIONS.

**DIMENSIONS:**  
DIMENSIONS MAY VARY SLIGHTLY DUE TO THE SHRINKAGE NATURE OF POLYETHYLENE.

455mm  
SCREW LID

455mm  
SCREW LID

TOP VIEW

HEX BOLT,  
NUT AND WASHER

DETAIL A

ST10000

SKD-SU-10000

ISOMETRIC VIEW

6 O'CLOCK VIEW

2296  
OVERALL HEIGHT

250

3 O'CLOCK VIEW

1800

1892

12 O'CLOCK VIEW

2930

3010

BARE TANK WEIGHT: 475kg  
SKID WEIGHT: 381kg

00	ISSUED FOR CONSTRUCTION	KD	RB	MJ	08.09.23
REV	DESCRIPTION	DWN	CHK	APP	DATE



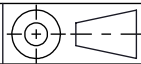
Engineered Project Solutions

MATERIAL	ASTM A36 STEEL
COLOUR/ FINISH	GALV
S.G.	

DWN	KD
CHK	RB
APP	MJ
SCALE:	NTS

STOCK CODE	ST10000 AND SKD-SU-10000
PRODUCT	10000 LTR SUMP BASE TANK ON SKID

PROPRIETARY. Neither this document nor its contents may be used or reproduced in any manner without the written authorisation of COERCO  
Unless otherwise noted all dimensions are in millimetres



A3

COERCO  
23 Harris Rd, Malaga Western Australia 6090

Phone: 1800 646 277  
E-mail: info@coerco.com.au

SHEET 2 OF 2

DWG NO.

ST10000\_GA\_001

REV. 00