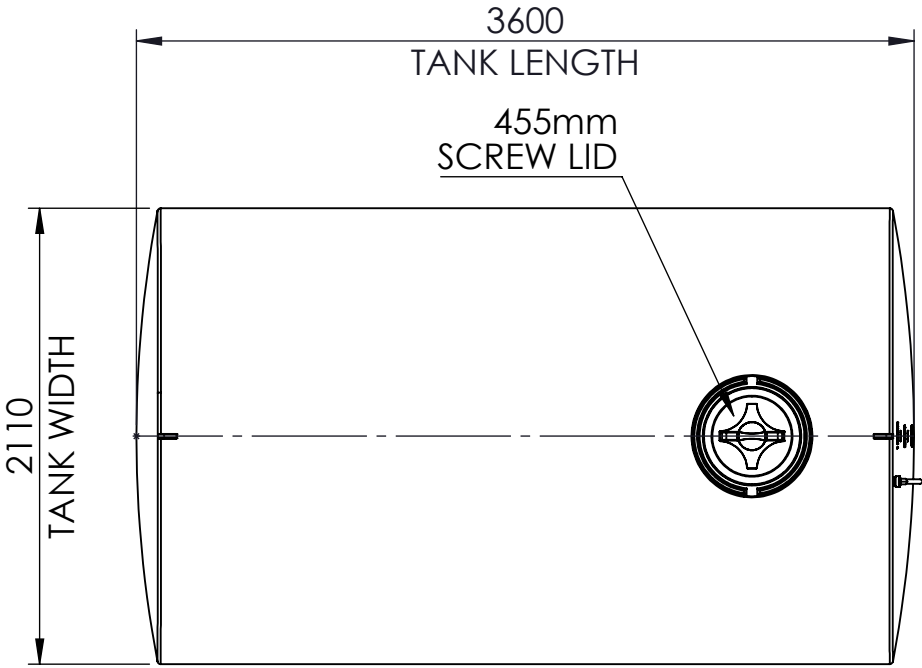


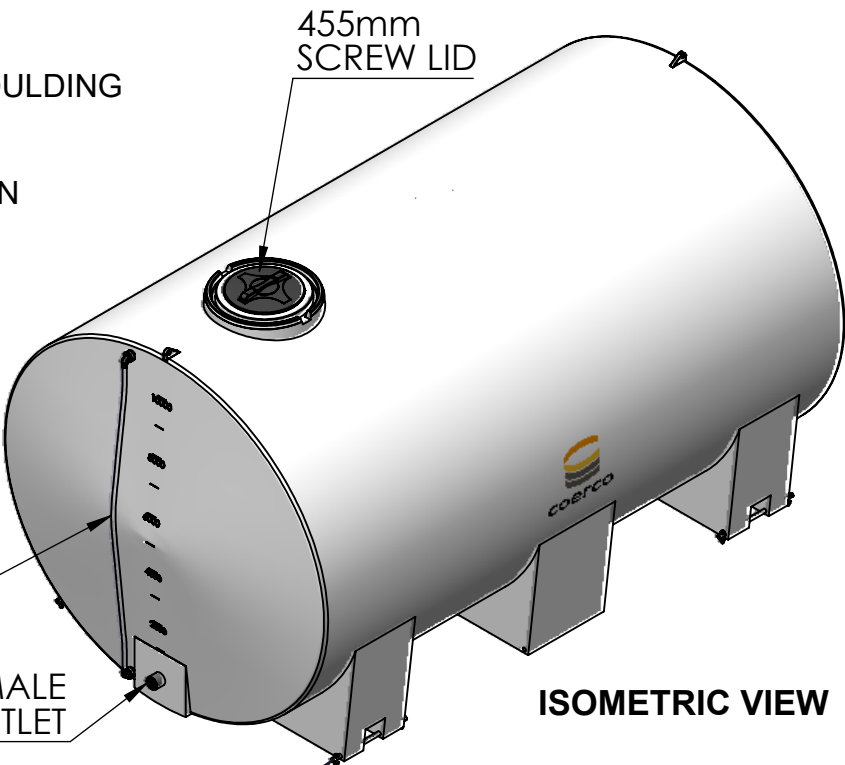
10,000LTR FREE STANDING CARTAGE TANK

**MATERIAL:**  
LLDPE MATERIAL DESIGNED SPECIFICALLY FOR ROTATIONAL MOULDING APPLICATIONS DELIVERING A HIGH ESCR, CHEMICAL RESISTANCE,STIFFNESS AND TOUGHNESS WHICH IS UV STABILISED TO PROVIDE PROLONGED OUTDOOR PROTECTION IN HARSH AUSTRALIAN CONDITIONS.

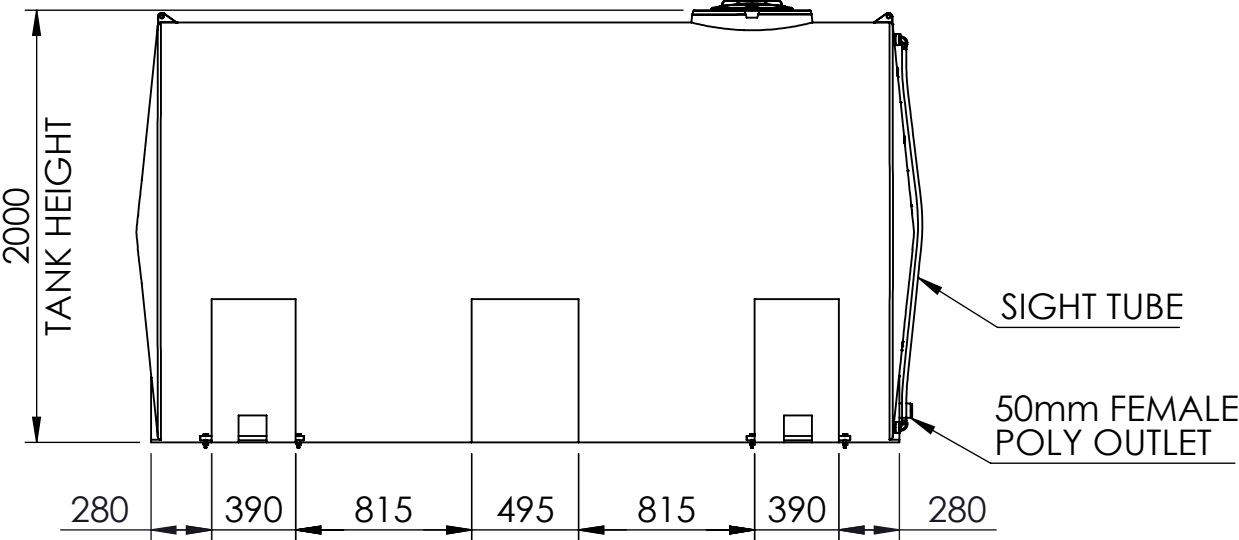
**DIMENSIONS:**  
DIMENSIONS MAY VARY SLIGHTLY DUE TO THE SHRINKAGE NATURE OF POLYETHYLENE.



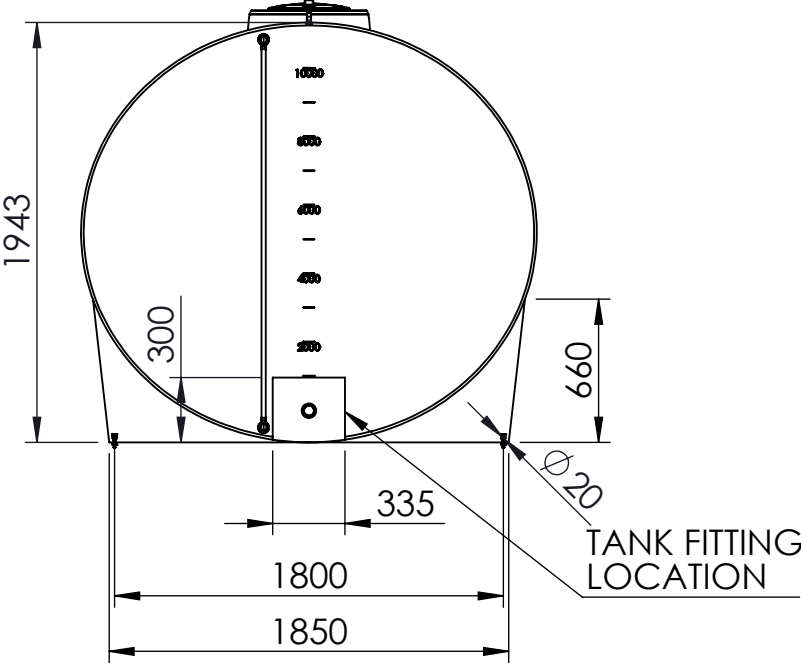
TOP VIEW



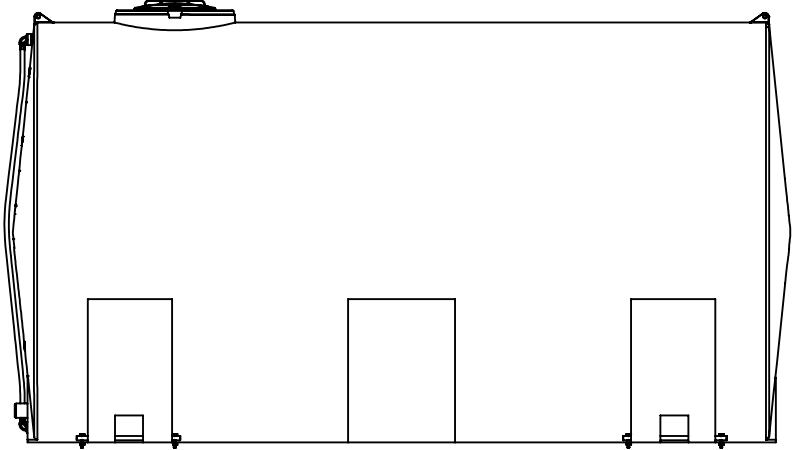
ISOMETRIC VIEW



6 O'CLOCK VIEW



3 O'CLOCK VIEW



12 O'CLOCK VIEW

BARE TANK WEIGHT: 475kg

REV	DESCRIPTION	DWN	CHK	APP	DATE
02	UPDATE DRAWING TEMPLATE	KD	RB	MJ	30.08.23
01	ISSUED FOR CONSTRUCTION	SA			11.02.22



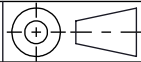
Engineered Project Solutions

MATERIAL	LOW DENSITY POLYETHYLENE
COLOUR/ FINISH	
S.G.	

DWN	KD
CHK	RB
APP	MJ
SCALE: NTS	

STOCK CODE	ST10000FS
PRODUCT	ST10000FS FREE STANDING TANK

PROPRIETARY. Neither this document nor its contents may be used or reproduced in any manner without the written authorisation of COERCO Unless otherwise noted all dimensions are in millimetres



A3

COERCO  
23 Harris Rd, Malaga Western Australia 6090

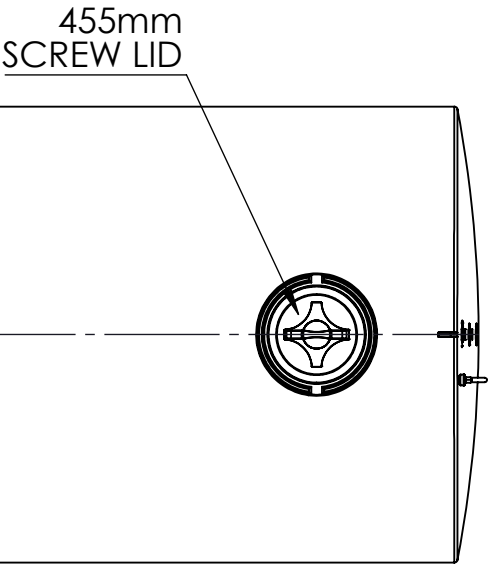
Phone: 1800 646 277  
E-mail: info@coerco.com.au

SHEET 1 OF 2	DWG NO. ST10000FS_GA_001	REV. 02
--------------	--------------------------	---------

10,000LTR FREE STANDING CARTAGE TANK  
WITH SKID FRAME

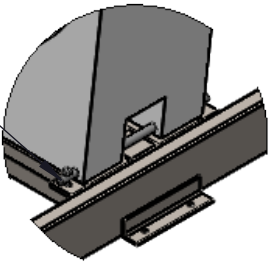
**MATERIAL:**  
LLDPE MATERIAL DESIGNED SPECIFICALLY FOR ROTATIONAL MOULDING APPLICATIONS DELIVERING A HIGH ESCR, CHEMICAL RESISTANCE, STIFFNESS AND TOUGHNESS WHICH IS UV STABILISED TO PROVIDE PROLONGED OUTDOOR PROTECTION IN HARSH AUSTRALIAN CONDITIONS.

**DIMENSIONS:**  
DIMENSIONS MAY VARY SLIGHTLY DUE TO THE SHRINKAGE NATURE OF POLYETHYLENE.

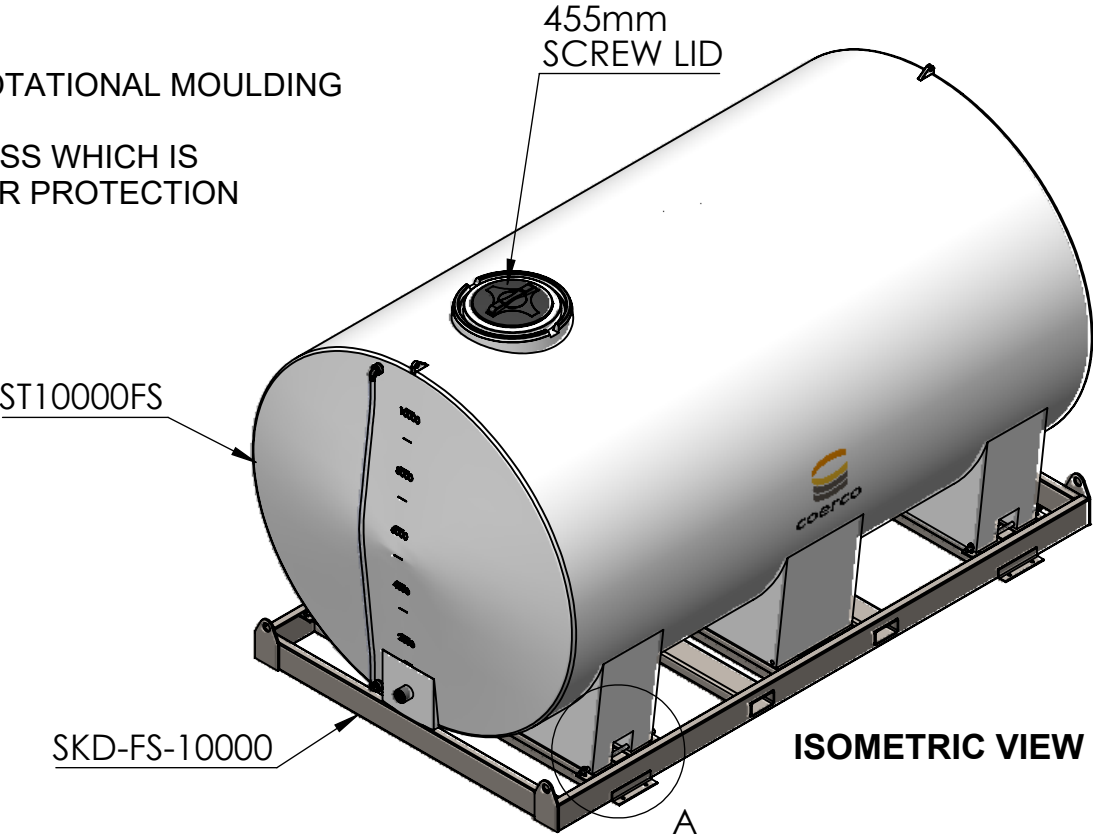


TOP VIEW

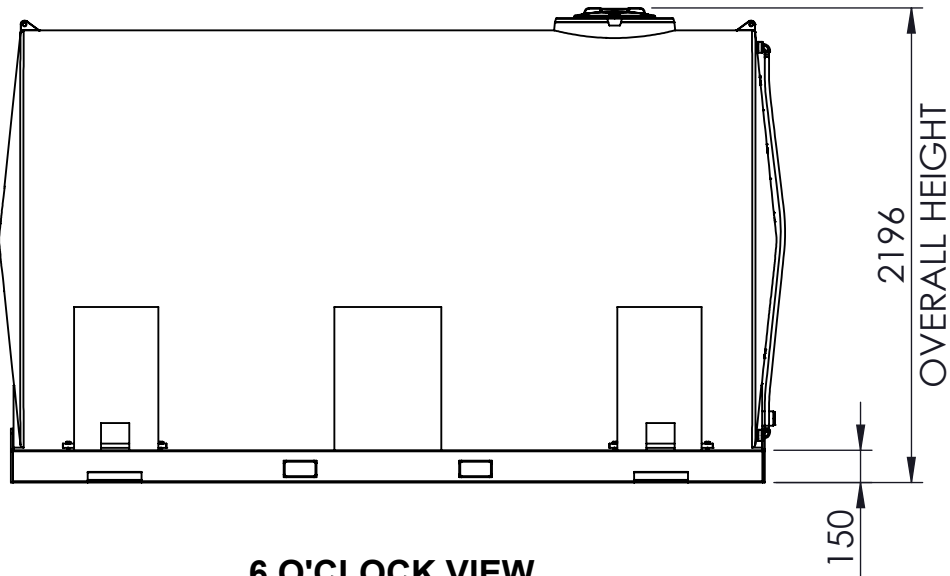
HEX BOLT,  
NUT AND WASHER



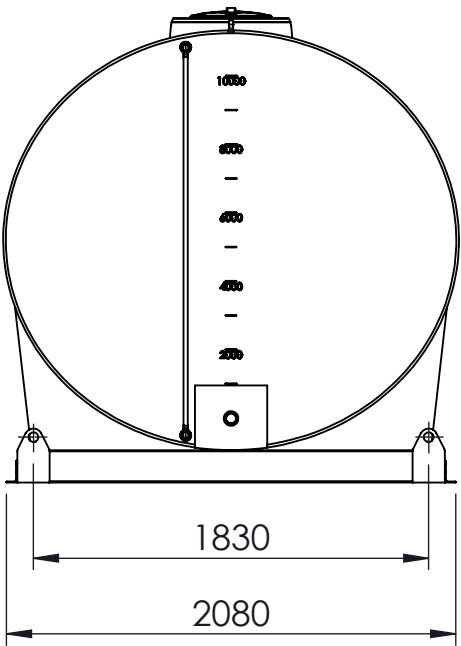
DETAIL A



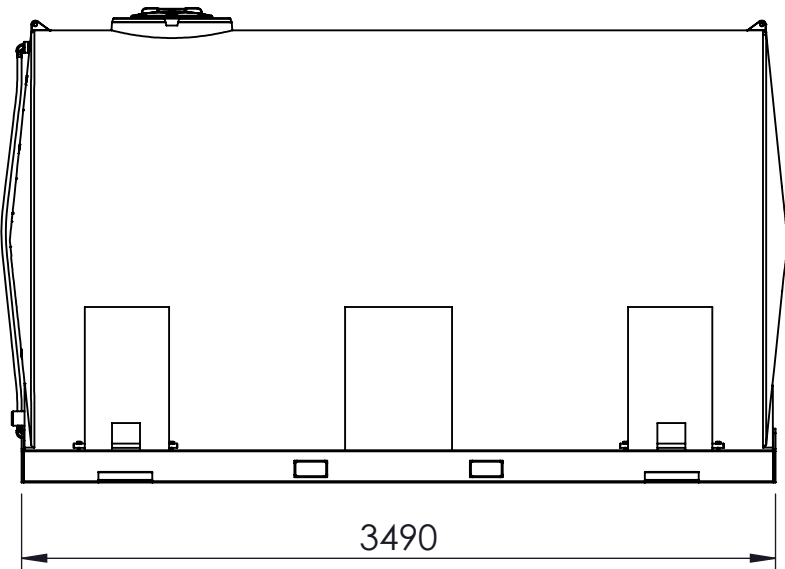
ISOMETRIC VIEW



6 O'CLOCK VIEW



3 O'CLOCK VIEW



12 O'CLOCK VIEW

BARE TANK WEIGHT: 475kg  
SKID WEIGHT: 382kg

00	ISSUED FOR CONSTRUCTION	KD	RB	MJ	30.08.23
REV	DESCRIPTION	DWN	CHK	APP	DATE

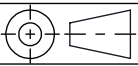


MATERIAL	ASTM A36 STEEL
COLOUR/ FINISH	GALV
S.G.	

DWN	KD
CHK	RB
APP	MJ
SCALE:	NTS

STOCK CODE	ST10000FS AND SKD-FS-10000
PRODUCT	10000 LTR FS CARTAGE TANK ON SKID

PROPRIETARY. Neither this document nor its contents may be used or reproduced in any manner without the written authorisation of COERCO Unless otherwise noted all dimensions are in millimetres



A3

COERCO  
23 Harris Rd, Malaga Western Australia 6090

Phone: 1800 646 277  
E-mail: info@coerco.com.au

SHEET 2 OF 2	DWG NO.	ST10000FS_GA_001	REV. 00
--------------	---------	------------------	---------