

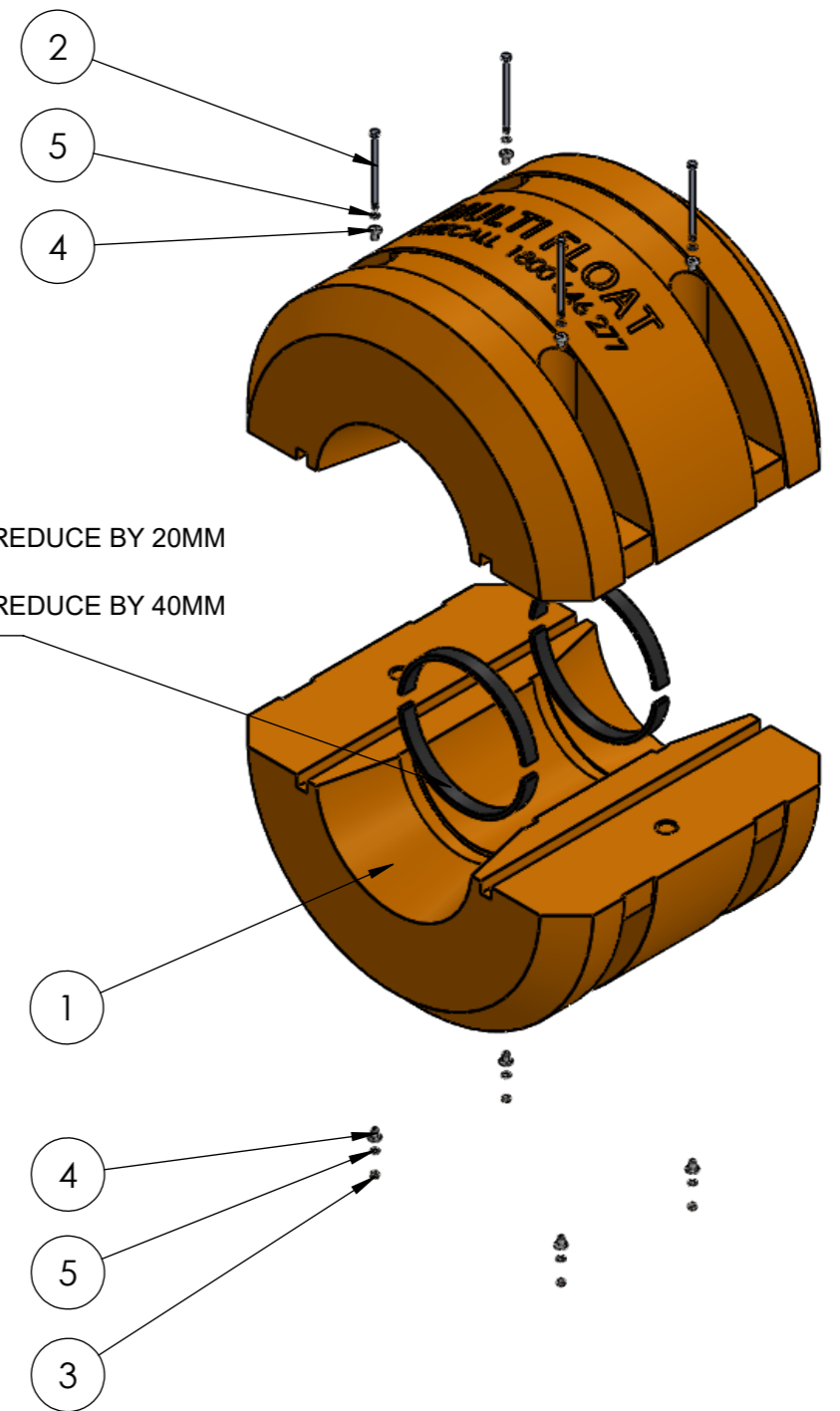
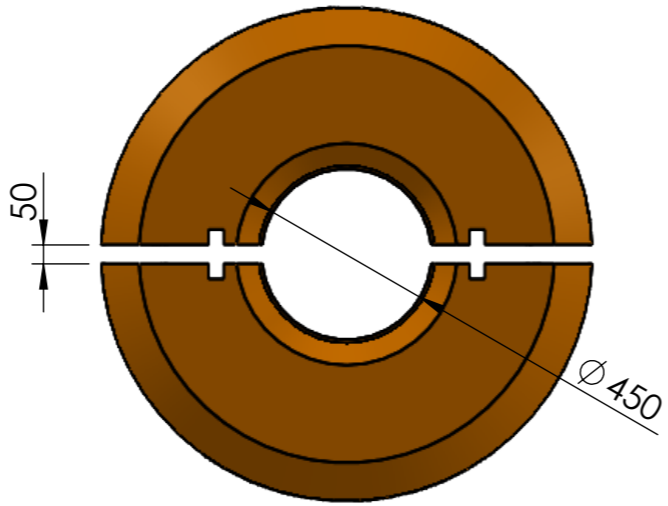
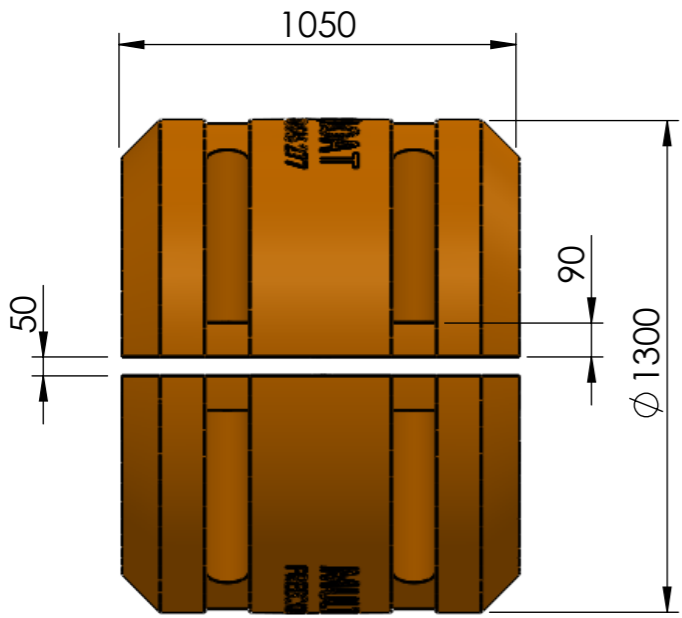
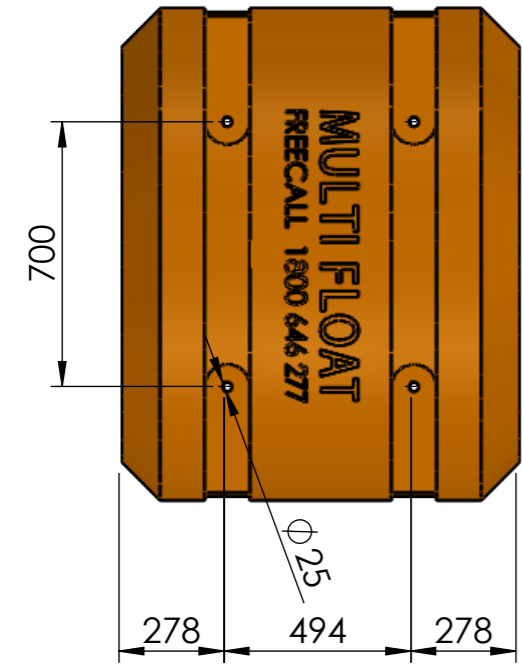
ITEM NO.	DESCRIPTION	QTY.	CODE	LENGTH (mm)
1	450MM PIPE FLOAT SET	2	MTF450	1050
KIT	STANDARD GALVANISED FASTENER KIT INCLUDES:	1	MTF-GK-04	
2	12MM BOLTS	4		280
3	12MM NUTS	4		
4	BOLT RETAINER INSERTS	8		
5	12MM WASHERS	8		
OPTIONAL	STAINLESS STEEL FASTENER KIT	1	MTF-SK-04	280
OPTIONAL	RUBBER REDUCER TO REDUCE 20MM - SET	2	MTF-B-12H	707
OPTIONAL	RUBBER REDUCER TO REDUCE 40MM - SET	4	MTF-B-12F	707

NOTES:

MATERIAL:
LLDPE MATERIAL DESIGNED SPECIFICALLY FOR ROTATIONAL MOULDING APPLICATIONS DELIVERING A HIGH ESCR, CHEMICAL RESISTANCE, STIFFNESS AND TOUGHNESS WHICH IS UV STABILISED TO PROVIDE PROLONGED OUTDOOR PROTECTION IN HARSH CONDITIONS.

DIMENSIONS:
DIMENSIONS MAY VARY SLIGHTLY DUE TO THE SHRINKAGE NATURE OF POLYETHYLENE.

REFER TO TECHNICAL DATA SHEET FOR FURTHER PRODUCT DETAILS AND INSTALLATION INFORMATION.



RUBBER REDUCERS.
- 2x RUBBER STRIPS IN SET TO REDUCE BY 20MM (FIT IN ONE FLOAT HALF)
- 4x RUBBER STRIPS IN SET TO REDUCE BY 40MM (FIT IN BOTH FLOAT HALVES)



DATE	15/07/2022	MATERIAL	LLDPE
PRODUCT	HOSE FLOATS	SURFACE FINISH	-
PRODUCT CODE	MTF 450	WALL THICKNESS	-
DRAWING No	C-MTF450-001	SCALE	NOT TO SCALE

REV	BY	DATE	DESCRIPTION
01	MI	15/07/2022	ISSUED FOR CONSTRUCTION
A	MI	01/11/2021	INITIAL RELEASE

SHEET 1 OF 1
CHKD
APVD
SHEET SIZE **A3**