



**coerco**  
agriculture

**JUNE  
2024  
EDITION**

# PRODUCT CATALOGUE



WATER TANKS • LIVESTOCK PRODUCTS  
LIQUID FERTILISER PRODUCTS  
TRANSPORT TANKS • FIRE FIGHTING EQUIPMENT  
DIESEL PRODUCTS • SEPTIC SYSTEMS





## DISCLAIMER

Be advised that some information found in our catalogue may contain typographical errors, inaccuracies, or omissions on product descriptions, specifications, pricing, and other details. Information on weight, measurement, and colours, are the best approximates possible.

Coerco cannot guarantee and assumes no legal liability or responsibility for the accuracy or completeness of the information provided. Coerco reserves the right to change, delete, or otherwise modify the information represented without any prior notice.



# ABOUT US

Coerco is an established and trusted Australian manufacturer and supplier of innovative polyethylene products essential for every type of liquid, storage and transportation. Delivering world-class products is the highest priority along with striving to improve lives by innovating in the agricultural industry and creating opportunities within the market.

With the best support network of key distributors, Coerco understands the specific issues faced by the farming community. Coerco's key distributors are in every major township across Western Australia.

As a leading liquid storage manufacturer and supplier in Australia with decades of experience and expertise to provide quality in every aspect of its products, Coerco has an outstanding range of equipment. Every aspect of the manufacturing process is closely monitored to the highest quality from water, liquid fertiliser and diesel storage to fire-fighting equipment and sewerage treatment.

## COMPANY HISTORY AND RURAL ROOTS

Coerco has been supplying Western Australia with a range of innovative polyethylene liquid storage solutions designed to meet the needs of agriculture for more than 30 years. The company was created by Coerco's Chief Executive Officer, Andrew Jackson in 1993 as Rapid Plastics and added a subsidiary in the industrial sector called Multi-Tech. In 2016 the company underwent a major rebranding and merged the two companies to form Coerco.

Coerco has always committed to supporting the rural community from its factory in Dalwallinu, which employs more than 150 staff and donates to multiple rural causes and charitable groups. By growing its company in a small country town, Coerco understands the issues facing rural WA.





# COERCO MEANS...

Coerco is renowned for providing quality products to the agricultural market in WA. Products that are easy to use, simple to install and long lasting. Coerco's simple ordering and delivery service, reliable warranties and after-sales service are second to none.

## Rural Knowledge

Coerco's experienced sales team understands each local area and is equipped with rural knowledge to assist with livestock products, liquid management, fire fighting or septic system requirements.

## Australian Made

Coerco's team has more than 150 years of combined industry experience with an expansive factory in Dalwallinu, modern offices in Malaga and fabrication centres in Bunbury and Northam, with products made to suit the harsh and changing Australian climate.

Continuous innovation ensures every poly product is designed for peak performance to meet the needs of farmers across Western Australia.

## Customer Care

Dedicated and experienced staff monitor every aspect of each product order to ensure a seamless and trouble-free experience. Complete customer satisfaction is at the center of Coerco's business philosophy with the Coerco team maintaining regular and open communication throughout the purchasing process and for after-sales feedback.





# CUSTOMER REVIEWS



**Sophie H**

We are happy with our rain tank. From easy purchase to fast delivery the team were quick to respond and always polite. The tank itself has not budged when full like our other tanks, the shallow baskets are better design and it's clearly better quality. We will definitely buy more from Coerco in the future



**Stuart McAlpine**

In my business I value relationships and businesses that predominately base themselves in regional Australia. I have seen their product range grow and quality continue to be improved over that time. I've been with Coerco for over thirty years and since they began manufacturing plastics. Their service and backup is best in class. Thanks Coerco.



**Chris Walsh**

Flawless delivery. Final location didn't have easy access. The driver spent a bit of time thinking the job through. Transfer from back of lorry to final location was flawless. Call a few days ahead of delivery was also appreciated to check best access to property.

# CUSTOMER CARE

## Supporting Rural Farms and Towns



Coerco has a long-standing reputation of supporting Western Australia's rural businesses to enable them to remain strong and continue providing valued services to the local community.

With its factory based in Dalwallinu, Coerco understands the needs of the rural community first-hand. This steadfast approach to the farming community has been honed over almost three decades of supplying high-quality products to farmers.

Convenient and reliable access to quality water storage products at a moment's notice is often crucial to a farmer's livelihood. Coerco is also committed to backing disadvantaged and charitable rural groups throughout Western Australia.



# KNOWLEDGEABLE AND FLEXIBLE LOGISTICS

## Distribution Network

A reliable supply of Coerco products available across the state

Coerco's large range of liquid storage solutions, agricultural products, septic systems and fire fighting units are readily accessible in convenient locations throughout rural regions of WA. The knowledgeable local staff provide expert guidance on the best type, size and colours to choose from as well as tips and advice on installation and maintenance. Coerco has held a strong relationship with its rural dealer network since the 1990s, which also helps to support local communities and businesses.



## Logistics

A comprehensive logistics team keeps its fleet of trucks moving

Coerco has a large, specialised transport fleet with decades of experience and connections to proven transport networks. The fleet is part of an agile operation to coordinate deliveries to remote locations, when it suits our customers. Our transport and logistics team is experienced in the planning and delivery of products to remote locations. More than 10 permanent truck drivers are complemented by on call staff to provide a 24-hour, five-day-a-week transport service.

## Warranty and After Sales Care

At Coerco, complete customer satisfaction is a critical driving force of the business philosophy, and this extends to warranty. Each product includes guaranteed manufacturer support for the period stated after purchase. This means the product is warranted against defects or faults caused by poor workmanship or inferior quality.





# A MASTERPIECE IS CREATED

Coerco creates its own virgin polymer material in-house which ensures total quality control from start to finish. All of Coerco's products are designed and developed under strict international quality controls to ensure they meet the highest standards of quality, are suitable for drinking water and are fully UV stabilised to withstand the harsh weather conditions in WA. The one-piece construction results in unbeatable structural stability and durability.



## Into the Oven

Once each tank mould has its lid clamped on, it is then placed into large ovens. Once the cooking cycle is complete, the mould is removed from the oven and is set aside to allow the product to cool. This is when the molten polymer sets to the shape of the mould and solidifies.



## A Tank is Born

During the cooling process, the poly product shrinks and pulls away from the interior surface of the mould. This allows the tanks and other products to be slid out of the moulds as one piece without seams that create cracking issues. The mould lids are removed and tanks are pulled or slid out before being placed in trimming and assembly areas for finishing off.



## Finishing Touches

The tanks are cleaned and fitted with inlets, outlets and overflows during the final parts of the process. Small standard tanks are finished standing upright, while large standard tanks are finished on large rollers that spin the tanks. Tanks that require custom fabrication and other fittings are taken to Coerco's polyethylene fabrication workshops. Lastly, the tanks are placed into stock holding bays or loading bays before being delivered on site via a comprehensive in-house logistics team.





# MEET THE TEAM



Andrew



Justin



Adam



Micah



Warren



Gareth



Bradyn



Ryan



Craig



Keval



Denise



Stacey



Jamie



Caleb





# PRODUCT DIRECTORY

## WATER TANKS

Pg. 11



Premium Corrugated Tanks	11-13
Premium Flatwalled Tanks	14-15
Slimline Tanks	16
Tank Fittings and Accessories	17-19
Colour Options	20

## LIVESTOCK PRODUCTS

Pg. 21



All Poly Stock Troughs	22
Steel Frame Longline Troughs	23
M Series Troughs	24
Ultra Tub Troughs	25
Cup and Saucer Tanks	26

## LIQUID FERTILISER PRODUCTS

Pg. 27



Liquid Fertiliser Storage	28
Free Standing Liquid Fertiliser Transport Tanks	29-30
Sump Based Liquid Fertiliser Transport Tanks	31-33
Bulk Liquid Fertiliser Transport Tanks	34



# PRODUCT DIRECTORY

## TRANSPORT TANKS

Pg. 35



Free Standing Liquid Transport Tanks	36-37
Sump Based Liquid Transport Tanks	38-39
Liquid Transport Accessories	40

## FIRE FIGHTING EQUIPMENT

Pg. 41



Skid Mount Fire Fighting Units	42
Compact Fire Fighting Units	43
Trailed Fire Fighting Units	44-45
Hose Reels	46

## DIESEL PRODUCTS

Pg. 47



Diesel Storage Tanks	48
Trailed Diesel Transport Equipment	49-50
Free Standing Diesel Transport Equipment	51-52
Diesel Transport Units	53
Diesel Transfer Accessories	54

## SEPTIC SYSTEMS

Pg. 55



Septic Tanks	56
Leach Drain Systems	57



# WATER TANKS

The Thickest, Time-Tested Poly Water Tanks To Ever Exist In Rural Western Australia.

Manufactured & Designed by Rural Aussies for Rural Aussies, reliable Coerco water tanks help put seasonal goals within your reach, just what every Australian agriculture business needs.



## Key Features

- One-piece construction
- Durable and impact resistant polyethylene for long life
- Manufactured in guidance to Australian Standards
- Available in an array of colours



Attractive Heritage Design



UV Stabilised



Made of Polyethylene

Disclaimer: The images shown are for illustration purposes only and may not be an exact representation of the product.

# WATER TANKS

Premium Corrugated Water Tanks



## CORRUGATED WATER TANKS

### Features

- One piece construction
- Attractive heritage design
- Corrugated for strength and traditional appearance
- UV stabilised to withstand our harsh climate
- Durable and impact resistant polyethylene for long life
- Manufactured in guidance with Australian Standards
- Self supporting lid design eliminates need for centre support pole
- Available in a range of colours, see colour chart on page 20

1,000 Litres



### RT1000

CODE

Capacity 1,000 Litres | Diameter 1000mm  
Inlet Height 1495mm | Total Height 1550mm

◆ **\$718.30** Inc. GST

2,500 Litres



### RT2500

CODE

Capacity 2,500 Litres | Diameter 1400mm  
Inlet Height 1900mm | Total Height 2050mm

◆ **\$1,074.70** Inc. GST

2,500 Litres



### RT2500S

CODE

Capacity 2,500 Litres | Diameter 1850mm  
Inlet Height 1070mm | Total Height 1250mm

◆ **\$1,074.70** Inc. GST

4,500 Litres



### RT4500

CODE

Capacity 4,500 Litres | Diameter 1850mm  
Inlet Height 1950mm | Total Height 2100mm

◆ **\$1,384.90** Inc. GST

4,500 Litres



### RT4500S

CODE

Capacity 4,500 Litres | Diameter 2420mm  
Inlet Height 1200mm | Total Height 1350mm

◆ **\$1,515.80** Inc. GST

9,000 Litres



### RT9000

CODE

Capacity 9000 Litres | Diameter 2420mm  
Inlet Height 2255mm | Total Height 2430mm

◆ **\$2,392.50** Inc. GST

9,000 Litres



### RT9000S

CODE

Capacity 9,000 Litres | Diameter 2950mm  
Inlet Height 1560mm | Total Height 1825mm

◆ **\$2,550.90** Inc. GST

9,500 Litres



### RT9500

CODE

Capacity 9,500 Litres | Diameter 2600mm  
Inlet Height 1915mm | Total Height 2150mm

◆ **\$2,614.70** Inc. GST

Disclaimer: The images shown are for illustration purposes only and may not be an exact representation of the product. Actual product dimensions may vary slightly due to polyethylene shrinkage.



# WATER TANKS

Premium Corrugated Water Tanks



**RT13500**  
CODE

Capacity 13,500 Litres | Diameter 2950mm  
Inlet Height 2075mm | Total Height 2325mm

**\$3,030.50** Inc. GST



**RT22500**  
CODE

Capacity 22,500 Litres | Diameter 3550mm  
Inlet Height 2550mm | Total Height 2825mm

**\$4,239.40** Inc. GST



**RT32000**  
CODE

Capacity 32,000 Litres | Diameter 3950mm  
Inlet Height 2740mm | Total Height 3000mm

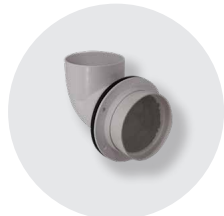
**\$5,977.40** Inc. GST



## 2 TANKS SPECIAL OFFER

Code	Description	Retail Pricing (Inc. GST)
RT22500	2 X 22,500 Litres (45,000 Litres)	<b>\$4,155.80</b> (per tank)
RT32000	2 X 32,000 Litres (64,000 Litres)	<b>\$5,859.70</b> (per tank)

## STANDARD FITTINGS



90mm PVC Mesh Overflow



Ball Valve



Screw on Lid



40mm Brass Outlet  
(for tap)



Strainer Basket

## OPTIONAL EXTRA



40mm Brass Inlet

Please note that fittings can be customised to your requirement.

Disclaimer: The images shown are for illustration purposes only and may not be an exact representation of the product. Actual product dimensions may vary slightly due to polyethylene shrinkage.

# WATER TANKS

Premium Flat Walled Water Tanks



**WaterMark**

WMK26522  
AS/NZ4766

## FLAT WALLED WATER TANKS

### Features

- One piece construction
- Sturdy, reliable and built to last
- UV stabilised to withstand our harsh climate
- Supplied with screw in lid, overflow, outlet and ball valve
- Manufactured in guidance with Australian Standards
- Self supporting lid eliminates need for centre support pole
- Available in all of our colour range, (see colour chart on page 20)

5,300 Litres



### JRR5300

CODE

Capacity 5,300 Litres | Diameter 1800mm  
Inlet Height 2275mm | Total Height 2275mm

◆ **\$1,670.90** Inc. GST

10,500 Litres



### JRR10500

CODE

Capacity 10,500 Litres | Diameter 2450mm  
Inlet Height 2445mm | Total Height 2450mm

◆ **\$3,212.00** Inc. GST

14,000 Litres



### JRR14000

CODE

Capacity 14,000 Litres | Diameter 2540mm  
Inlet Height 3180mm | Total Height 3200mm

◆ **\$3,306.60** Inc. GST

25,000 Litres



### JRR25000

CODE

Capacity 25,000 Litres | Diameter 3825mm  
Inlet Height 2535mm | Total Height 2555mm

◆ **\$4,499.00** Inc. GST

50,000 Litres



### JRR50000

CODE

Capacity 50,000 Litres | Diameter 4575mm  
Inlet Height 3285mm | Total Height 3400mm

◆ **\$10,876.80** Inc. GST



# WATER TANKS

Premium Flat Walled Water Tanks



## 2 TANKS SPECIAL OFFER

Code	Description	Retail Pricing (Inc. GST)
JRR25000	2 X 25,000 Litres (50,000 Litres)	\$4,409.90 (per tank)
JRR50000	2 X 50,000 Litres (100,000 Litres)	\$10,661.20 (per tank)

## STANDARD FITTINGS



90mm PVC Mesh Overflow



Ball Valve



Screw on Lid




40mm Brass Outlet (for tap)



Strainer Basket

## OPTIONAL EXTRA



40mm Brass Inlet

Please note that fittings can be customised to your requirement.

Disclaimer: The images shown are for illustration purposes only and may not be an exact representation of the product. Actual product dimensions may vary slightly due to polyethylene shrinkage.

# WATER TANKS

Slimline Tanks



## Features

- Attractive space saving design
- Ideal for under eave line or pathway placements
- Manufactured in guidance with Australian Standards
- Available in all of our colour range, (see colour chart on page 20)



## RTS800

CODE

Capacity 800 Litres  
Inlet Height 1450mm | Total Height 1500mm



**\$792.00** Inc. GST



## RTS1500

CODE

Capacity 1,500 Litres  
Inlet Height 1950mm | Total Height 2000mm



**\$1,041.70** Inc. GST



## RTS3000

CODE

Capacity 3,000 Litres  
Inlet Height 2050mm | Total Height 2120mm



**\$1,912.90** Inc. GST

## STANDARD FITTINGS



90mm PVC Mesh Overflow



Bibcock Tap



Screw on Lid



25mm Brass Outlet  
(for tap)



Strainer Basket



25mm Drain Bung

Disclaimer: The images shown are for illustration purposes only and may not be an exact representation of the product. Actual product dimensions may vary slightly due to polyethylene shrinkage.



# WATER TANKS

## Tank Fittings & Accessories

### LIDS & OVERFLOWS



Screw on Lid



Strainer Basket



PVC Mesh  
Overflow

Code	Description	Retail Pricing (Inc. GST)
COMP-33-05-PPE	355mm Screw Lid	<b>\$83.60</b>
COMP-33-07-PPE	355mm Strainer Basket	<b>\$67.10</b>
COMP-33-08-PPE	455mm Screw Lid	<b>\$115.50</b>
COMP-33-09-PPE	455mm Strainer Basket	<b>\$80.30</b>
TAL-5	90mm PVC Mesh Overflow	<b>\$18.70</b>

### BALL VALVES & TAPS



Brass Lever  
Ball Valve



Poly Ball Valve



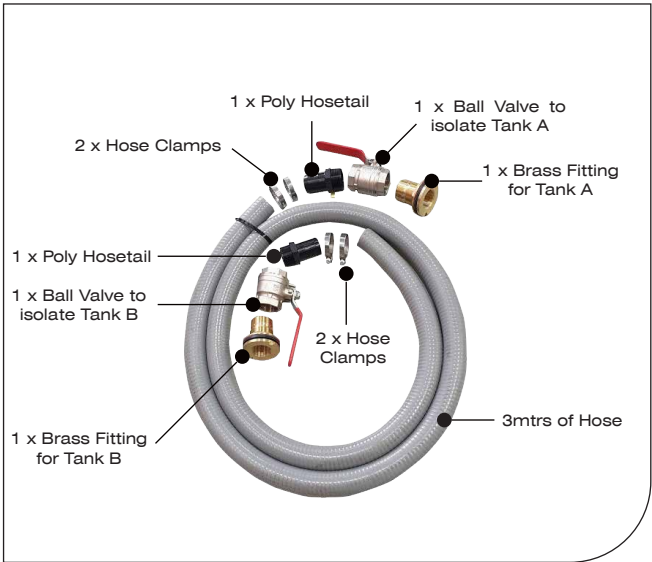
Bibcock Tap

Code	Description	Retail Pricing (Inc. GST)
COMP-38-01	20x20mm Brass Bibcock Tap	<b>\$25.30</b>
COMP-37-01	Brass Lever Ball Valve – 25mm BSP Thread	<b>\$36.30</b>
COMP-37-02	Brass Lever Ball Valve – 32mm BSP Thread	<b>\$55.00</b>
COMP-37-03	Brass Lever Ball Valve – 40mm BSP Thread	<b>\$71.50</b>
COMP-37-04	Brass Lever Ball Valve – 50mm BSP Thread	<b>\$112.20</b>
COMP-37-07	Brass Lever Ball Valve – 80mm BSP Thread	<b>\$233.20</b>
COMP-37-08	Brass Lever Ball Valve – 100mm BSP Thread	<b>\$342.10</b>
COMP-36-01	Poly Ball Valve – 25mm BSP Thread	<b>\$33.00</b>
COMP-36-02	Poly Ball Valve – 32mm BSP Thread	<b>\$48.40</b>
COMP-36-03	Poly Ball Valve – 40mm BSP Thread	<b>\$61.60</b>
COMP-36-04	Poly Ball Valve – 50mm BSP Thread	<b>\$83.60</b>
COMP-36-05	Poly Ball Valve – 80mm BSP Thread	<b>\$113.30</b>
COMP-36-06	Poly Ball Valve – 100mm BSP Thread	<b>\$206.80</b>

# WATER TANKS

## Tank Fittings & Accessories

### COMBO TANK JOINER KITS



#### Features

- Connector Kit to join two poly tanks at the base
- Complete set ready for installation
- Extend your water storage capacity with combo tanks

Code	Description	Retail Pricing (Inc. GST)
TJK-01	Combo Tank Joiner Kit - includes 3mtrs 40mm hose & fittings to connect 2x Poly tanks at base	\$183.70
TJK-02	Combo Tank Joiner Kit - includes 3mtrs 50mm hose & fittings to connect 2x Poly tanks at base	\$253.00

### TANK LEVEL GAUGES

#### Dipstick (TAL-7)

- Floating pole type water level gauge
- Out of reach of animals
- 360° all round visibility
- Great for Cup & Saucer Tanks



Code	Description	Retail Pricing (inc. GST)
TAL-7	"Dip-stick" tank level gauge	\$291.50
TAL-10	"Liquidator" tank level gauge	\$233.20

#### Liquidator (TAL-10)

- Ideal for chemical tanks, only the float is in contact with liquid
- Protected guided indicator, isn't bothered by wind or other disturbances





# WATER TANKS

## Tank Fittings & Accessories

### TANK FLANGE FITTINGS

Brass Tank Fittings

- Locking nut is left hand thread for secure fit. Doesn't come loose when fitting valves etc
- 25-50mm have internal and external threads
- 80-100mm have external thread



Poly Tank Fittings

- Available in 6 sizes.
- Manufactured from UV stabilised glass fibre reinforced nylon to protect from weather, termite, fungi and bacteria.



Code	Description	Retail Pricing (Inc. GST)
COMP-01-01	25mm (1") Brass Fitting	\$41.80
COMP-01-02	32mm (1¼") Brass Fitting	\$46.20
COMP-01-03	40mm (1½") Brass Fitting	\$47.30
COMP-01-04	50mm (2") Brass Fitting	\$59.40
COMP-01-05	80mm (3") Brass Fitting	\$170.50
COMP-01-06	100mm (4") Brass Fitting	\$293.70
COMP-19-02	25mm (1") Poly Fitting	\$15.40
COMP-19-03	32mm (1¼") Poly Fitting	\$27.50
COMP-19-04	40mm (1½") Poly Fitting	\$34.10
COMP-19-05	50mm (2") Poly Fitting	\$36.30
COMP-19-06	80mm (3") Poly Fitting	\$118.80
COMP-19-07	100mm (4") Poly Fitting	\$158.40

Disclaimer: The images shown are for illustration purposes only and may not be an exact representation of the product.

# WATER TANKS

## Colour Options

Coerco poly water tanks are designed and manufactured under strict control to ensure they are suitable for drinking quality and fully UV stabilised in all colours to survive our harsh climate.

Our tanks are manufactured using the best linear low density food grade polyethylene and in guidance with the following standards:

- AS/NZS 4766(Int.) Polyethylene storage tanks for water and chemicals
- AS/NZS 4020 Australian Standard for drinking water
- AS 2070 Part 1 and Part 8 Australian Standard for food contact

## Standard Stocked Colours



## Other Colours Available



Optional COLORBOND® colours are available but may be subject to surcharge and/or delivery delay. Due to printing differences, some colours may vary. COLORBOND® and colour names are registered trademarks of Blue Scope Steel Ltd.™Colour names are trademarks of Blue Scope Steel Ltd. Coerco colours represented match COLORBOND® steel colours.



### No leakage and loss of water!

An important feature of Coerco tanks is one piece construction of roof and walls moulded as one with no joins seams or parts lines down the walls. At no stage is the roof cut off and screwed back on.



All tanks are rotationally moulded and tested to ensure walls are the thickest at the base where water pressure is greatest

### Moulded lifting lugs





# LIVESTOCK PRODUCTS

## High-Quality Livestock Products You Can Trust

Coerco have the largest range of poly livestock products in Western Australia. Whether your priority is efficiency, value-for-money, durability, ease-of-use or all of the above, our products and excellent customer service tick all the right boxes!

### Key Features

- Made of durable poly for lasting performance
- Manufactured in guidance of Australian Standards
- UV-stabilised for harsh climate conditions
- One-piece construction



Standard Colour is Beige



UV Stabilised



Covered Float

# LIVESTOCK PRODUCTS

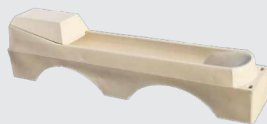
All Poly Stock Troughs

## ALL POLY STOCK TROUGHS

### Features

- Standard with 25mm (1") float valve
- Optional with 32mm (1¼"), 40mm (1½") or 50mm (2") float valve
- Unmatched strength through one piece moulding
- Exceptionally durable and versatile
- Easy to clean with round sweep out end
- Standard colour is beige
- Full float valve protection
- Designed and manufactured in WA for harsh local conditions
- Optional waterfilled base for improved stability
- Peg down points to prevent livestock pushing trough around

130 Litres



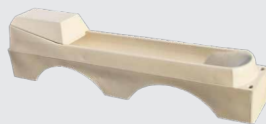
### PTR39X

CODE

Capacity 130 Litres (2400L x 450W x 420H)  
- without float valve

◆ **\$618.20** Inc. GST

130 Litres



### PTR39W

CODE

Capacity 130 Litres (2400L x 450W x 420H)  
- with 25mm float valve

◆ **\$663.30** Inc. GST

200 Litres



### PTR40X

CODE

Capacity 200 Litres (3600L x 450W x 420H)  
- without float valve

◆ **\$832.70** Inc. GST

200 Litres



### PTR40W

CODE

Capacity 200 Litres (3600L X 450W X 420H)  
- with 25mm float valve

◆ **\$877.80** Inc. GST

308 Litres



### PTR60X

CODE

Capacity 308 Litres (3600L X 580W X 460H)  
- without float valve

◆ **\$924.00** Inc. GST

308 Litres



### PTR60W

CODE

Capacity 308 Litres (3600L X 580W X 460H)  
- with 25mm float valve

◆ **\$970.20** Inc. GST

## FLOAT VALVE UPGRADES

Code	Description (mm)	Retail Pricing (Inc. GST)
+32LP	Float Valve upgrade to 32mm (1¼") Low Pressure	<b>\$102.30</b>
+32HP	Float Valve upgrade to 32mm (1¼") High Pressure	<b>\$102.30</b>
+40LP	Float Valve upgrade to 40mm (1½") Low Pressure	<b>\$143.00</b>
+40HP	Float Valve upgrade to 40mm (1½") High Pressure	<b>\$143.00</b>
+50LP	Float Valve upgrade to 50mm (2") Low Pressure	<b>\$174.90</b>
+50HP	Float Valve upgrade to 50mm (2") High Pressure	<b>\$174.90</b>

Disclaimer: The images shown are for illustration purposes only and may not be an exact representation of the product. Actual product dimensions may vary slightly due to polyethylene shrinkage.

# LIVESTOCK PRODUCTS

## Steel Frame Longline Troughs

### Features

- Water troughs standard with 25mm (1") float valve
- Optional with 32mm (1¼"), 40mm (1½") or 50mm (2") float valve
- Durable UV stabilised polyethylene for long outdoor life
- Light weight for ease of relocation
- Smooth finish and 2" drain bung facilitates cleaning
- Strong 25mm x 25mm galvanised steel frames
- Peg down points to prevent livestock pushing trough around

### STEEL FRAME WATER TROUGHS



#### PT06W

CODE

Capacity 190 Litres (2400L X 550W X 450H)  
- with 25mm float valve

**\$712.80** Inc. GST



#### PT16W

CODE

Capacity 380 Litres (4800L X 550W X 450H)  
- with 25mm float valve

**\$1,093.40** Inc. GST

### STEEL FRAME FEED TROUGHS



#### PT06F

CODE

Capacity 190 Litres (2400L X 550W X 450H)  
- no float valve

**\$484.00** Inc. GST



#### PT16F

CODE

Capacity 380 Litres (4800L X 550W X 450H)  
- no float valve

**\$950.40** Inc. GST

### FLOAT VALVE UPGRADES

Code	Description (mm)	Retail Pricing (Inc. GST)
+32LP	Float Valve upgrade to 32mm (1¼") Low Pressure	<b>\$102.30</b>
+32HP	Float Valve upgrade to 32mm (1¼") High Pressure	<b>\$102.30</b>
+40LP	Float Valve upgrade to 40mm (1½") Low Pressure	<b>\$143.00</b>
+40HP	Float Valve upgrade to 40mm (1½") High Pressure	<b>\$143.00</b>
+50LP	Float Valve upgrade to 50mm (2") Low Pressure	<b>\$174.90</b>
+50HP	Float Valve upgrade to 50mm (2") High Pressure	<b>\$174.90</b>

Disclaimer: The images shown are for illustration purposes only and may not be an exact representation of the product. Actual product dimensions may vary slightly due to polyethylene shrinkage.



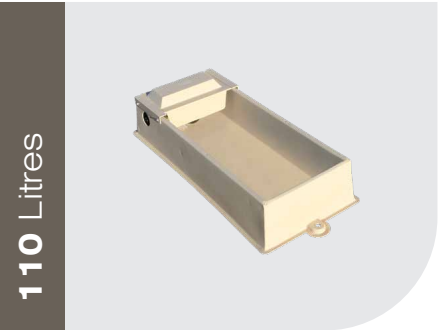
# LIVESTOCK PRODUCTS

## M Series Troughs

### Features

- Water troughs only available with 15mm float valve
- Strong all-poly construction suitable for corrosive environments
- Light and easy to handle facilitates relocation
- Smooth finish for ease of cleaning
- Peg down points to prevent livestock pushing trough around
- Covered float on water troughs prevents stock damage to float

### M SERIES WATER TROUGHS

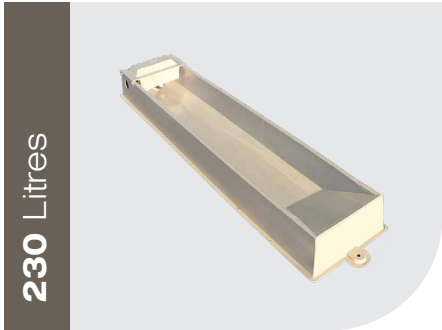


#### PTM33W

CODE

Capacity 110 Litres (1200L X 580W X 250H)  
- with 15mm float valve

 **\$289.30** Inc. GST



#### PTM31W

CODE

Capacity 230 Litres (2400L X 580W X 250H)  
- with 15mm float valve

 **\$394.90** Inc. GST

### M SERIES FEED TROUGHS



#### PTM33F

CODE

Capacity 110 Litres (1200L X 580W X 250H)  
- no float valve

 **\$176.00** Inc. GST



#### PTM31F

CODE

Capacity 230 Litres (2400L X 580W X 250H)  
- no float valve

 **\$286.00** Inc. GST

# LIVESTOCK PRODUCTS

## Ultra Tub Troughs

### Features

- Float compartment moulded as part of trough
- Raised float to allow complete filling of trough
- All pipework protected by trough surround
- 50mm drain bung
- Exceptionally strong design
- Stainless steel float valve cover fasteners

### ULTRA TUB TROUGHS



250 Litres



### PTU3\*

CODE

Capacity 250 Litres (1100D X 450H)  
- with 15mm float valve

**\$492.80** Inc. GST

600 Litres



### PTU6

CODE

Capacity 600 Litres (1400D X 550H)  
- with 25mm float valve

**\$812.90** Inc. GST

1,200 Litres



### PTU12

CODE

Capacity 1,200 Litres (1750D X 600H)  
- with 25mm float valve

**\$1,026.30** Inc. GST

2,500 Litres



### PTU25

CODE

Capacity 2,500 Litres (2400D X 650H)  
- with 25mm float valve

**\$1,606.00** Inc. GST

### FLOAT VALVE UPGRADES

Code	Description (mm)	Retail Pricing (Inc. GST)
+32LP	Float Valve upgrade to 32mm (1¼") Low Pressure	<b>\$102.30</b>
+32HP	Float Valve upgrade to 32mm (1¼") High Pressure	<b>\$102.30</b>
+40LP	Float Valve upgrade to 40mm (1½") Low Pressure	<b>\$143.00</b>
+40HP	Float Valve upgrade to 40mm (1½") High Pressure	<b>\$143.00</b>
+50LP	Float Valve upgrade to 50mm (2") Low Pressure	<b>\$174.90</b>
+50HP	Float Valve upgrade to 50mm (2") High Pressure	<b>\$174.90</b>

\*PTU3 is not available with float valve upgrades



Float valve protected by slide access cover

Disclaimer: The images shown are for illustration purposes only and may not be an exact representation of the product. Actual product dimensions may vary slightly due to polyethylene shrinkage.

# LIVESTOCK PRODUCTS

## Cup and Saucer Tanks

### Features

- 25mm (1") inlet and saucer float valves
- Extremely durable
- Tie down lugs on tank
- Easy action float cover with all stainless steel fasteners - no rust
- High / Low level inlets for filling at ground level or straight from windmill etc
- 50mm drain plug in all size saucers
- Standard in beige colour with float cover and stainless steel fasteners. Other colours available with a 10% surcharge and additional delivery time

### CUP AND SAUCER TANKS

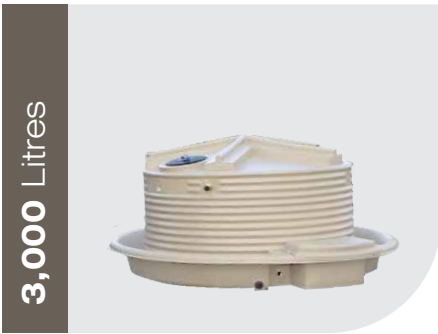


#### CS2700

CODE

Capacity 600 Gallon / 2,700 Litres  
(2000D x 2000H)

◆ **\$2,510.20** Inc. GST



#### CS3000

CODE

Capacity 660 Gallon / 3,000 Litres  
(2400D x 1240H)

◆ **\$2,567.40** Inc. GST

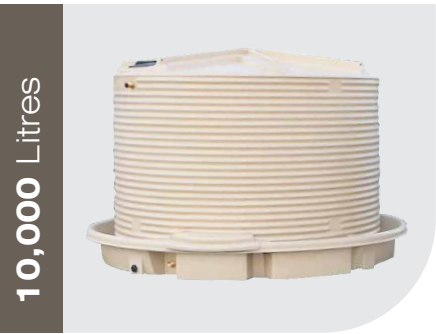


#### CS5000

CODE

Capacity 1,100 Gallon / 5,000 Litres  
(2400D x 2000H)

◆ **\$3,232.90** Inc. GST



#### CS10000

CODE

Capacity 2,200 Gallon / 10,000 Litres  
(3300D x 2000H)

◆ **\$4,364.80** Inc. GST



Protected float valve compartment and stainless steel fasteners.

Disclaimer: The images shown are for illustration purposes only and may not be an exact representation of the product. Actual product dimensions may vary slightly due to polyethylene shrinkage.



# LIQUID FERTILISER STORAGE & TRANSPORT

High-Quality Fertiliser Storage & Transport Tanks  
You Can Trust.

COERCO has forever changed the Liquid Fertiliser Storage & Transport market with its range of revolutionary polyethylene products and is now delivering more value whilst maximising efficiencies along with profits for Australian farmers!



## Key Features

- Certified design and analysis on structure
- Made of the highest quality poly, coerco's liquid storage tanks are UV stabilised to withstand the harsh Australian landscape
- Comes with the necessary fittings and accessories needed for immediate use



Standard Colour is White



UV Stabilised



Made of poly specifically resistant to the corrosive qualities of fertilisers

# LIQUID FERTILISER PRODUCTS

Liquid Fertiliser Storage

### Features

- Certified design and analysis on structure
- Durable, impact resistant, UV stabilised, chemical resistant poly material
- 80mm (3") suction port with butterfly valve, camlock and dust cap (includes elbow to draw from lowest point)
- 80mm (3") fill line including 25mm (1") drain for operator safety
- Tank level gauge for easy viewing of content volume
- Vented access hatch
- Approved for storage by all major liquid fertiliser companies

## LIQUID FERTILISER STORAGE



### LF10500

Capacity 10,500 Litres (14 Tonne)  
(2450D x 2450H)

**\$5,788.20** Inc. GST



### LF25000

Capacity 25,000 Litres (33 Tonne)  
(3825D x 2555H)

**\$7,498.70** Inc. GST



### LF50000

Capacity 50,000 Litres (65 Tonne)  
(4575D x 3400H)

**\$14,451.80** Inc. GST

## LIQUID FERTILISER STORAGE ACCESSORIES

Code	Description	Retail Pricing (Inc. GST)
LF-2R	80mm (3") to 50mm (2") Reducer Fittings	<b>\$74.80</b>

Disclaimer: The images shown are for illustration purposes only and may not be an exact representation of the product. Actual product dimensions may vary slightly due to polyethylene shrinkage.



# LIQUID FERTILISER PRODUCTS

## Free Standing Liquid Fertiliser Transport Tanks

### Features

- Special 'FNS' series range manufactured for transport of liquid fertilisers and chemicals with heavier SG ratings
- Easy to read calibrations†
- Strength through ingenuity of design
- Durable, impact resistant, UV stabilised polyethylene for long life
- Stainless steel lid
- Sight tube for easy viewing of content volume†
- One outlet supplied with tank, quantity and sizes optional
- Integral foam filled baffle to reduce surge and increase stability\*\*
- Mounting pins supplied as standard, extra mounting pins available
- Optional Ball Baffle System\* available
- All free standing tanks available with forkliftable skid
- Poly fittings for easy connection
- Standard colour is white

## FREE STANDING LIQUID FERTILISER TRANSPORT TANKS



Code	Description (mm)	Length (mm)	Width (mm)	Height (mm)	Retail Pricing (Inc. GST)
FNS2000FS	2,000 Ltr Liquid Fertiliser Free Standing Cartage Tank	1830	1400	1130	<b>\$2,902.90</b>
FNS3000FS	3,000 Ltr Liquid Fertiliser Free Standing Cartage Tank - Non Baffled	2365	1460	1300	<b>\$4,133.80</b>
FNS5000FS	5,000 Ltr Liquid Fertiliser Free Standing Cartage Tank - Non Baffled	2425	1830	1708	<b>\$5,868.50</b>
FNS7000FS	7,000 Ltr Liquid Fertiliser Free Standing Cartage Tank	3430	1850	1670	<b>\$7,977.20</b>
FNS10000FS	10,000 Ltr Liquid Fertiliser Free Standing Cartage Tank	3600	2100	1890	<b>\$11,788.70</b>
FNS12500FS	12,500 Ltr Liquid Fertiliser Free Standing Cartage Tank - Non Baffled	4000	2200	2250	<b>\$14,804.90</b>
FNS17000FS	17,000 Ltr Liquid Fertiliser Free Standing Cartage Tank - Non Baffled	4450	2300	2350	<b>\$20,838.40</b>



Mounting Pin



Cutaway showing baffle

\*\* Except 3000, 5000, 12500 & 17000ltr Models

† Calibrations and sight tube readings should be taken as an approximate measure of volume

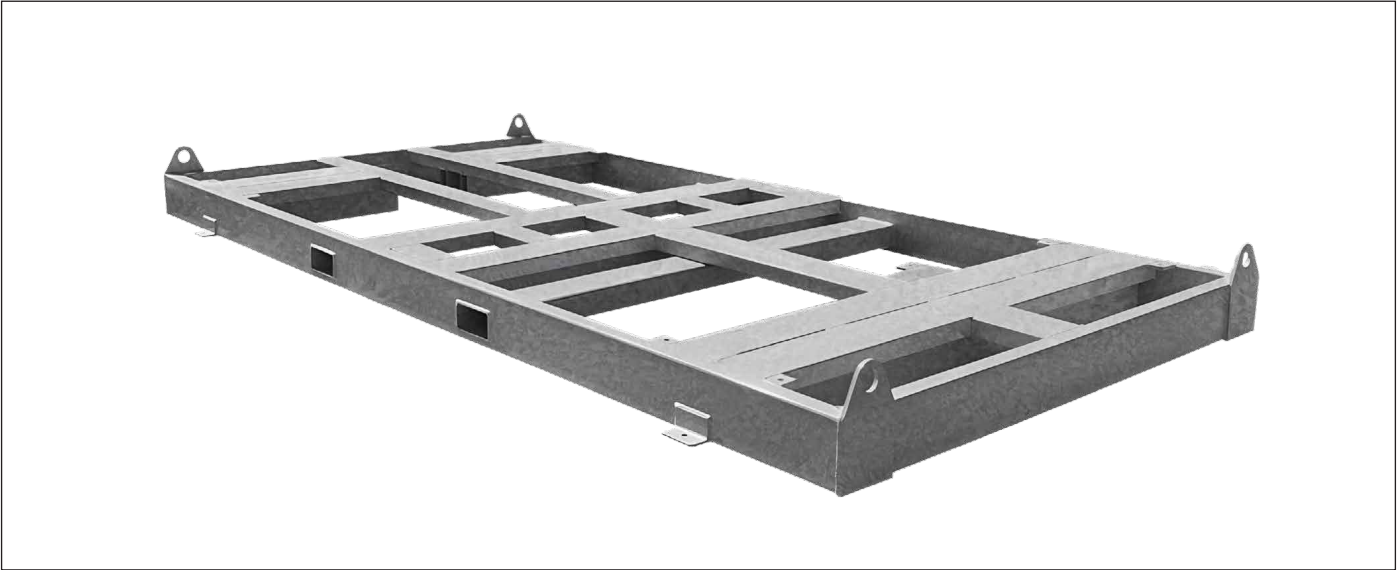
Disclaimer: The images shown are for illustration purposes only and may not be an exact representation of the product. Actual product dimensions may vary slightly due to polyethylene shrinkage.



# LIQUID FERTILISER PRODUCTS

Free Standing Liquid Fertiliser Transport Tanks

## FREE STANDING LIQUID FERTILISER TRANSPORT TANK SKID FRAMES



Code	Description (mm)	Retail Pricing (Inc. GST)
SKD-FS-2000HDG	Hot Dip Galvanised Skid Frame To Suit 2000L Free Standing Cartage Tank - Fork Accessible	\$3,262.60
SKD-FS-3000HDG	Hot Dip Galvanised Skid Frame To Suit 3000L Free Standing Cartage Tank - Fork Accessible	\$4,447.30
SKD-FS-5000HDG	Hot Dip Galvanised Skid Frame To Suit 5000L Free Standing Cartage Tank - Fork Accessible	\$5,206.30
SKD-FS-7000HDG	Hot Dip Galvanised Skid Frame To Suit 7000L Free Standing Cartage Tank - Fork Accessible	\$7,009.20
SKD-FS-10000HDG	Hot Dip Galvanised Skid Frame To Suit 10000L Free Standing Cartage Tank - Fork Accessible	\$7,169.80
SKD-FS-12500HDG	Hot Dip Galvanised Skid Frame To Suit 12500L Free Standing Cartage Tank - Fork Accessible	\$8,982.60
SKD-FS-17000HDG	Hot Dip Galvanised Skid Frame To Suit 17000L Free Standing Cartage Tank - Fork Accessible	\$10,051.80

# LIQUID FERTILISER PRODUCTS

Sump Based Liquid Fertiliser Transport Tanks

## Features

- Special 'FNS' series range manufactured for transport of liquid fertilisers and chemicals with heavier SG ratings
- Easy to read calibrations†
- Strength through ingenuity of design
- Durable, impact resistant, UV stabilised polyethylene for long life
- Stainless steel lid
- Sight tube for easy viewing of content volume†
- Two outlets supplied with tank, quantity and sizes optional
- Mounting pins supplied as standard, extra mounting pins available
- Optional Ball Baffle System® available
- Optional Skid Frame available
- Poly fittings for easy connection
- Standard colour is white

## SUMP BASED LIQUID FERTILISER TRANSPORT TANKS



### FNS2000

CODE

Capacity 2,000 Litres | Length 1830mm  
Width 1400mm | Height 1130mm

◆ **\$2,963.40\*** Inc. GST



### FNS3000

CODE

Capacity 3,000 Litres | Length 2365mm  
Width 1460mm | Height 1300mm

◆ **\$4,238.30\*** Inc. GST



### FNS5000

CODE

Capacity 5,000 Litres | Length 2425mm  
Width 1830mm | Height 1708mm

◆ **\$6,019.20\*** Inc. GST

\* These prices do not include the skid frame

† Calibrations and sight tube readings should be taken as an approximate measure of volume only.

Disclaimer: The images shown are for illustration purposes only and may not be an exact representation of the product. Actual product dimensions may vary slightly due to polyethylene shrinkage.

# LIQUID FERTILISER PRODUCTS

Sump Based Liquid Fertiliser Transport Tanks



## FNS7000

Capacity 7,000 Litres | Length 3430mm  
Width 1850mm | Height 1670mm

**\$8,181.80\*** Inc. GST



## FNS10000

Capacity 10,000 Litres | Length 3600mm  
Width 2100mm | Height 1890mm

**\$12,089.00\*** Inc. GST



## FNS12500

Capacity 12,500 Litres | Length 4000mm  
Width 2200mm | Height 2550mm

**\$15,186.60\*** Inc. GST



Mounting Pin



Note that the sump sits lower than the legs

\* These prices do not include the skid frame

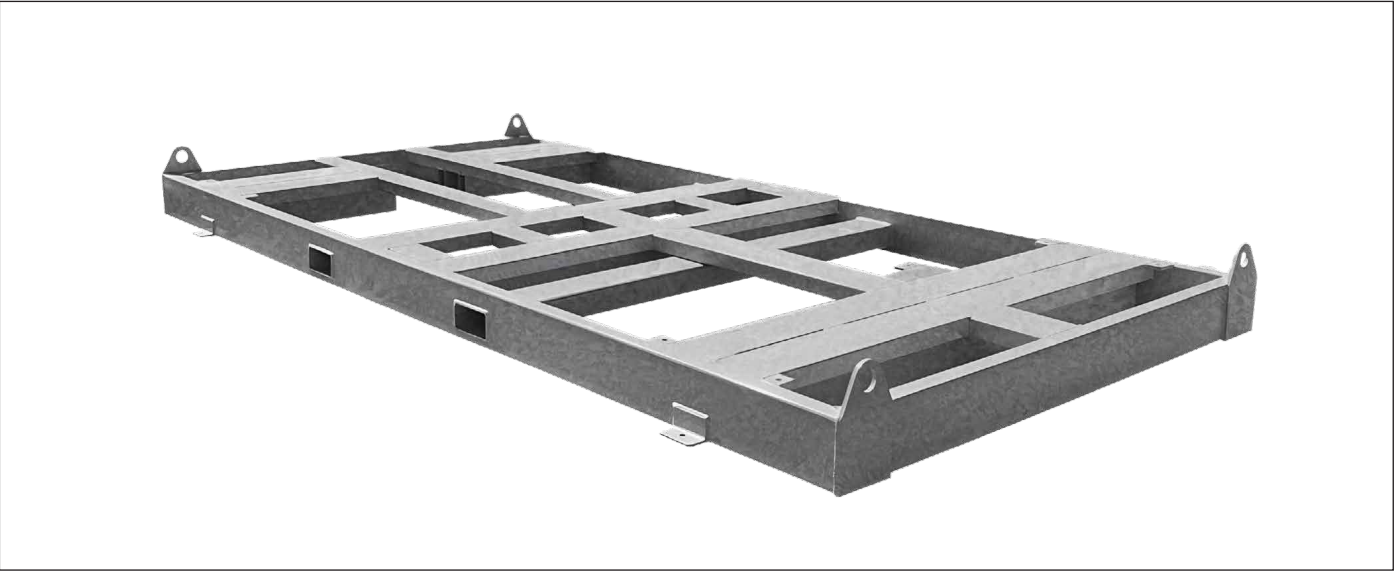
Disclaimer: The images shown are for illustration purposes only and may not be an exact representation of the product. Actual product dimensions may vary slightly due to polyethylene shrinkage.



# LIQUID FERTILISER PRODUCTS

Sump Based Liquid Fertiliser Transport Tanks

## SUMP BASED LIQUID FERTILISERTRANSPORT TANK SKID FRAMES



Code	Description (mm)	Retail Pricing (Inc. GST)
SKD-SU-2000HDG	Hot Dip Galvanised Skid Frame To Suit 2000L Sump Based Cartage Tank - Fork Accessible	\$3,528.80
SKD-SU-3000HDG	Hot Dip Galvanised Skid Frame To Suit 3000L Sump Based Cartage Tank - Fork Accessible	\$4,447.30
SKD-SU-5000HDG	Hot Dip Galvanised Skid Frame To Suit 5000L Sump Based Cartage Tank - Fork Accessible	\$5,206.30
SKD-SU-7000HDG	Hot Dip Galvanised Skid Frame To Suit 7000L Sump Based Cartage Tank - Fork Accessible	\$7,009.20
SKD-SU-10000HDG	Hot Dip Galvanised Skid Frame To Suit 10000L Sump Based Cartage Tank - Fork Accessible	\$7,824.30
SKD-SU-12500HDG	Hot Dip Galvanised Skid Frame To Suit 12500L Sump Based Cartage Tank - Fork Accessible	\$8,757.10

Disclaimer: The images shown are for illustration purposes only and may not be an exact representation of the product.

# LIQUID FERTILISER PRODUCTS

## Bulk Liquid Fertiliser Transport Tanks

### Features

- Heavy duty steel skid frame with two-pack epoxy
- Container lock mounting system to suit a 30-foot skel trailer
- Available in 25,000L or 29,500L capacities
- Fully-baffled tanks using baffle ball system
- Spill containment bunds around fill points
- Access platform and fold-down ladders
- 3-inch poly pump with Honda GX200 petrol engine
- 3-inch discharge to both sides
- 3-inch delivery hoses in PVC holders (both sides)
- 3-inch fill port (complies with liquid fertiliser supply stations)
- Stainless steel lid with breather and probe port
- Work lights for night use
- Stainless steel toolbox
- 200L freshwater tank for pump rinse and hand wash
- Air assisted flush out system

### BULK LIQUID FERTILISER TRANSPORT TANK



Code	Description
FNS25000-TS	25,000L Bulk Liquid Fertiliser Transport Unit (2 x 12,500 liquid fertiliser transport tanks)
FNS29500-TS	29,500L Bulk Liquid Fertiliser Transport Unit (1 x 17,000L and 1 x 12,500 liquid fertiliser transport tanks)



Stainless Steel Lid with breather and probe port



Stainless Steel Toolbox



3-inch Delivery Hoses in PVC Holders (both sides)



3-inch Poly Pump with Honda GX200 Petrol Engine



3-inch Discharge (both sides)



Access Platform and Fold-down Ladders

Disclaimer: The images shown are for illustration purposes only and may not be an exact representation of the product. Actual product dimensions may vary slightly due to polyethylene shrinkage.

# TRANSPORT TANKS

Coerco Liquid Transport Tanks, Built as Tough as Aussie Farmers.

Manufactured and designed by Rural Aussies for Rural Aussies, Coerco poly liquid transport tanks have the exact features you need to strengthen your operations.



## Key Features

- Easy to read calibrations
- UV-stabilised for our harsh climate conditions
- Durable and impact-resistant polyethylene
- A vast variety of capacities with baffle systems to choose from
- All our liquid transport solutions are suitable for use in any industry and are rust-free.



Sight tube for easy viewing of content volume



UV Stabilised



Standard Colour is White



# TRANSPORT TANKS

## Free Standing Liquid Transport Tanks

### Features

- Easy to read calibration†
- Strength through ingenuity of design
- Durable, impact resistant, UV stabilised polyethylene for long life
- Sight tube for easy viewing of content volume†
- One outlet supplied with tank, quantity and sizes optional
- Secure screw lid
- Integral foam filled baffle to reduce surge and increase stability\*\*
- Mounting pins supplied as standard, extra mounting pins available
- Optional Ball Baffle System® available
- All free standing tanks available with forkliftable galvanised skid
- Strainer basket supplied with all tanks
- Standard colour is white

## FREE STANDING LIQUID TRANSPORT TANKS



**ST10000FS**

Code	Description (mm)	Length (mm)	Width (mm)	Height (mm)	Retail Pricing (Inc. GST)
ST400FS	400 Ltr Free Standing Liquid Transport Tank	1250	850	650	<b>\$860.20</b>
ST600FS	600 Ltr Free Standing Liquid Transport Tank	1350	980	710	<b>\$944.90</b>
ST800FS	800 Ltr Free Standing Liquid Transport Tank	1370	1100	860	<b>\$1,162.70</b>
ST1000FS	1,000 Ltr Free Standing Liquid Transport Tank	1370	1210	960	<b>\$1,287.00</b>
ST1500FS	1,500 Ltr Free Standing Liquid Transport Tank	1780	1260	1045	<b>\$1,896.40</b>
ST2000FS	2,000 Ltr Free Standing Liquid Transport Tank	1830	1400	1130	<b>\$2,525.60</b>
ST3000FS	3,000 Ltr Free Standing Liquid Transport Tank - Non Baffled	2365	1460	1300	<b>\$3,470.50</b>
ST5000FS	5,000 Ltr Free Standing Liquid Transport Tank - Non Baffled	2425	1830	1708	<b>\$4,913.70</b>
ST7000FS	7,000 Ltr Free Standing Liquid Transport Tank	3400	1850	1670	<b>\$6,675.90</b>
ST10000FS	10,000 Ltr Free Standing Liquid Transport Tank	3600	2110	2020	<b>\$9,880.20</b>
ST12500FS	12,500 Ltr Free Standing Liquid Transport Tank - Non Baffled	3930	2200	2085	<b>\$12,410.20</b>
ST17000FS	17,000 Ltr Free Standing Liquid Transport Tank - Non Baffled	4630	2330	2350	<b>\$17,471.30</b>

\*\* Except 3000, 5000, 12500 & 17000ltr Models

† Calibrations and sight tube readings should be taken as an approximate measure of volume only.

Disclaimer: The images shown are for illustration purposes only and may not be an exact representation of the product. Actual product dimensions may vary slightly due to polyethylene shrinkage.

# TRANSPORT TANKS

Free Standing Liquid Transport Tanks

## FREE STANDING LIQUID TRANSPORT TANKS SKID FRAMES



ST17000FS SKID

Code	Description (mm)	Retail Pricing (Inc. GST)
SKD-FS-400	Duragalv Skid Frame To Suit 400L Free Standing Cartage Tank	\$1,238.60
SKD-FS-600	Duragalv Skid Frame To Suit 600L Free Standing Cartage Tank	\$1,266.10
SKD-FS-800	Duragalv Skid Frame To Suit 800L Free Standing Cartage Tank	\$1,447.60
SKD-FS-1000	Duragalv Skid Frame To Suit 1000L Free Standing Cartage Tank	\$1,452.00
SKD-FS-1500	Duragalv Skid Frame To Suit 1500L Free Standing Cartage Tank	\$1,775.40
SKD-FS-2000	Duragalv Skid Frame To Suit 2000L Free Standing Cartage Tank - Fork Accessible	\$2,228.60
SKD-FS-3000	Duragalv Skid Frame To Suit 3000L Free Standing Cartage Tank - Fork Accessible	\$3,014.00
SKD-FS-5000	Duragalv Skid Frame To Suit 5000L Free Standing Cartage Tank - Fork Accessible	\$3,781.80
SKD-FS-7000	Duragalv Skid Frame To Suit 7000L Free Standing Cartage Tank - Fork Accessible	\$5,501.10
SKD-FS-10000	Duragalv Skid Frame To Suit 10000L Free Standing Cartage Tank - Fork Accessible	\$5,724.40
SKD-FS-12500	Duragalv Skid Frame To Suit 12500L Free Standing Cartage Tank - Fork Accessible	\$6,604.40
SKD-FS-17000	Duragalv Skid Frame To Suit 17000L Free Standing Cartage Tank - Fork Accessible	\$7,070.80

Disclaimer: The images shown are for illustration purposes only and may not be an exact representation of the product. Actual product dimensions may vary slightly due to polyethylene shrinkage.

# TRANSPORT TANKS

## Sump Based Liquid Transport Tanks

### Features

- Strength through ingenuity of design
- Durable, impact resistant, UV stabilised polyethylene for long life
- Easy to read calibrations†
- Sight tube for easy view of content volume†
- Vented lid and strainer basket supplied with all tanks
- Two outlets supplied with tank, quantity and sizes optional
- Secure screw lid
- Available with robust galvanised steel mounting frame for protection of tank and ease of installation
- Mounting pins supplied as standard for secure fastening, extra mounting pins available
- Optional Ball Baffle System® available
- Optional Skid Frame available
- Poly fittings for easy connection
- Standard colour is white

## SUMP BASED LIQUID TRANSPORT TANKS

400 Litres



### ST400

CODE

Capacity 400 Litres | Length 1250mm  
Width 850mm | Height 650mm

◆ \$898.70\* Inc. GST

600 Litres



### ST600

CODE

Capacity 600 Litres | Length 1350mm  
Width 980mm | Height 710mm

◆ \$1,034.00\* Inc. GST

800 Litres



### ST800

CODE

Capacity 800 Litres | Length 1370mm  
Width 1100mm | Height 860mm

◆ \$1,284.80\* Inc. GST

1,000 Litres



### ST1000

CODE

Capacity 1,000 Litres | Length 1355mm  
Width 1210mm | Height 960mm

◆ \$1,393.70\* Inc. GST

1,500 Litres



### ST1500

CODE

Capacity 1,500 Litres | Length 1780mm  
Width 1260mm | Height 990mm

◆ \$2,049.30\* Inc. GST

\* These prices do not include the skid frame

† Calibrations and sight tube readings should be taken as an approximate measure of volume only.

Disclaimer: The images shown are for illustration purposes only and may not be an exact representation of the product. Actual product dimensions may vary slightly due to polyethylene shrinkage.



# TRANSPORT TANKS

## Sump Based Liquid Transport Tanks



### ST2000

CODE

Capacity 2,000 Litres | Length 1900mm  
Width 1410mm | Height 1120mm

◆ \$2,730.20\* Inc. GST



### ST3000

CODE

Capacity 3,000 Litres | Length 2365mm  
Width 1460mm | Height 1300mm

◆ \$3,559.60\* Inc. GST



### ST5000

CODE

Capacity 5,000 Litres | Length 2425mm  
Width 1830mm | Height 1708mm

◆ \$5,041.30\* Inc. GST



### ST7000

CODE

Capacity 7,000 Litres | Length 3400mm  
Width 1850mm | Height 1670mm

◆ \$6,845.30\* Inc. GST



### ST10000

CODE

Capacity 10,000 Litres | Length 3660mm  
Width 2110mm | Height 2020mm

◆ \$10,133.20\* Inc. GST



### ST12500

CODE

Capacity 12,500 Litres | Length 3930mm  
Width 2200mm | Height 2105mm

◆ \$12,727.00\* Inc. GST

## SUMP BASED LIQUID TRANSPORT TANK SKID FRAMES

Description (mm)		Retail Pricing (Inc. GST)
SKD-SU-400	Duragalv Skid Frame To Suit 400L Sump Based Cartage Tank	\$1,372.80
SKD-SU-600	Duragalv Skid Frame To Suit 600L Sump Based Cartage Tank	\$1,411.30
SKD-SU-800	Duragalv Skid Frame To Suit 800L Sump Based Cartage Tank	\$1,708.30
SKD-SU-1000	Duragalv Skid Frame To Suit 1000L Sump Based Cartage Tank	\$1,711.60
SKD-SU-1500	Duragalv Skid Frame To Suit 1500L Sump Based Cartage Tank	\$2,039.40
SKD-SU-2000	Duragalv Skid Frame To Suit 2000L Sump Based Cartage Tank - Fork Accessible	\$2,368.30
SKD-SU-3000	Duragalv Skid Frame To Suit 3000L Sump Based Cartage Tank - Fork Accessible	\$3,014.00
SKD-SU-5000	Duragalv Skid Frame To Suit 5000L Sump Based Cartage Tank - Fork Accessible	\$3,781.80
SKD-SU-7000	Duragalv Skid Frame To Suit 7000L Sump Based Cartage Tank - Fork Accessible	\$5,502.20
SKD-SU-10000	Duragalv Skid Frame To Suit 10000L Sump Based Cartage Tank - Fork Accessible	\$6,340.40
SKD-SU-12500	Duragalv Skid Frame To Suit 12500L Sump Based Cartage Tank - Fork Accessible	\$6,604.40

\* These prices do not include the skid frame

Disclaimer: The images shown are for illustration purposes only and may not be an exact representation of the product. Actual product dimensions may vary slightly due to polyethylene shrinkage.

# TRANSPORT TANKS

## Liquid Transport Accessories

### Features

- Tested and approved by Loadsafe Australia and complies with load restraint guide performance standards
- Reduces fluid movement for improved load stability during transit
- Independent testing shows 46% improvement in braking
- Slalom testing shows remarkable increase in vehicle stability with a two-thirds full water tank fitted with Baffle Ball System®
- Suitable for use with all tanks - steel, poly, fibre glass, etc.
- Food grade quality material - suitable for potable water
- Can be used with water, diesel and other liquids
- No rust, lightweight and durable
- Low liquid displacement - 428ml per ball or 1.07% of total volume
- Simple to install
- Recommended use quantity - 355mm is one ball baffle per 40 litres of tank capacity
- Ball Baffles are supplied in two halves and require clipping together and inserting through the lid into tank
- Made in Australia

### BALL BAFFLE SYSTEM



Code	Description (mm)	Retail Pricing (Inc. GST)
SBB355	Large Baffle Ball - 355mm	\$15.40



### TRANSPORT TANK LIDS & STRAINER BASKET



Screw on Lid



Strainer Basket



Stainless Steel Hinged Lid

Code	Description (mm)	Retail Pricing (Inc. GST)
COMP-33-05-PPE	355mm Screw Lid	\$83.60
COMP-33-07-PPE	355mm Strainer Basket	\$67.10
COMP-33-08-PPE	455mm Screw Lid	\$115.50
COMP-33-09-PPE	455mm Strainer Basket	\$80.30
SSTL-455	455mm Stainless Steel Hinged Lid and Seal	\$530.20

Disclaimer: The images shown are for illustration purposes only and may not be an exact representation of the product. Actual product dimensions may vary slightly due to polyethylene shrinkage.



# FIRE FIGHTING EQUIPMENT

Take Charge Before Fire Becomes Unstoppable on Your Farm.

Manufactured and designed by Rural Aussies for Rural Aussies, Coerco fire fighting equipment helps safeguard your investments so you can stay in business.



## Key Features

- Easy to use, baffled for stability
- Equipped with a genuine Honda GX series engine and Aussie Fire Chief pump with a 5-year pump end warranty while staying portable
- Range of sizes and models available fit for rural applications



Hot dipped galvanised steel hose reel



UV Stabilised



Designed for Easy Operation

This photo is for creative visualisation only and is not based on a real-life incident.



# FIRE FIGHTING EQUIPMENT

## Skid Mount Fire Fighting Units

### Features

- Durable UV stabilised white coloured polyethylene tank with baffle
- Sight tube for easy view of content volume
- Secure screw lid
- Strong hot dip galvanised steel frame with easy lifting & tie down points - always ready for action
- Hot dipped galvanised steel hose reel with 30m of 25mm hose - complete with adjustable nozzle and hose reel lock
- 50mm camlock quick connection fittings
- 6mtr Suction hose with non return foot valve
- Aussie Fire Chief Pump with a 5-Year pump end warranty and powered by a 3-year warranty Honda engine

### SKID MOUNT FIRE FIGHTING UNITS



### Options

- Diesel powered pump
- Ball Baffle System®

Code	Description (mm)	Retail Pricing (Inc. GST)
FF400C	400 Litre Skid Mount Fire Fighting Unit	\$6,085.20
FF600C	600 Litre Skid Mount Fire Fighting Unit	\$6,318.40
FF800C	800 Litre Skid Mount Fire Fighting Unit	\$6,581.30
FF1000C	1,000 Litre Skid Mount Fire Fighting Unit	\$6,714.40
FF1500C	1,500 Litre Skid Mount Fire Fighting Unit	\$7,483.30
FF2000C	2,000 Litre Skid Mount Fire Fighting Unit	\$8,923.20
FF3000C	3,000 Litre Skid Mount Fire Fighting Unit	\$10,342.20
FF5000C	5,000 Litre Skid Mount Fire Fighting Unit	\$12,554.30
FF7000C	7,000 Litre Skid Mount Fire Fighting Unit	\$16,034.70
FF10000C	10,000 Litre Skid Mount Fire Fighting Unit	\$19,462.30
FF12500C	12,500 Litre Skid Mount Fire Fighting Unit	\$22,872.30
FF17000C	17,000 Litre Skid Mount Fire Fighting Unit	\$28,399.80

Disclaimer: The images shown are for illustration purposes only and may not be an exact representation of the product. Actual product dimensions may vary slightly due to polyethylene shrinkage.

# FIRE FIGHTING EQUIPMENT

## Compact Fire Fighting Units

### Features

- All sizes with sump drain for complete evacuation of tank contents
- All sizes with forklift access
- Durable UV stabilised polyethylene tank for long life
- Secure screw lid
- Strong hot dip galvanised steel frame with easy lifting and tie down points
- Hot dipped galvanised steel hose reel with 30m of 25mm hose - complete with adjustable nozzle and hose reel lock
- 6mtr suction hose with foot valve
- Aussie Fire Chief Pump with a 5-Year pump end warranty and powered by a 3-year warranty Honda engine
- Compact design - Ideal for tray back utes
- 50mm camlock quick connection fittings

### Options

- Diesel powered pump
- Ball Baffle System®

## COMPACT FIRE FIGHTING UNITS



### FFCH600

CODE

Capacity 600 Litres | Length 1675mm  
Width 1185mm | Height 1025mm

◆ \$5,421.90 Inc. GST



### FFCH800

CODE

Capacity 800 Litres | Length 1675mm  
Width 1185mm | Height 1045mm

◆ \$5,659.50 Inc. GST



### FFCH1000

CODE

Capacity 1,000 Litres | Length 1675mm  
Width 1185mm | Height 1240mm

◆ \$5,888.30 Inc. GST



Disclaimer: The images shown are for illustration purposes only and may not be an exact representation of the product. Actual product dimensions may vary slightly due to polyethylene shrinkage.

# FIRE FIGHTING EQUIPMENT

## Trailed Fire Fighting Units

### Features

- Designed and manufactured for easy operation
- Durable UV stabilised white coloured polyethylene tank with baffle
- Secure screw lid
- Galvanised chassis frame
- Mudguards and mudflaps
- Heavy duty pivot jockey wheel
- Landcruiser stud pattern rims
- Aussie Fire Chief Pump with a 5-Year pump end warranty, powered by a 3-year warranty Honda engine
- 50mm camlock quick connection fittings
- Hot dipped galvanised steel hose reel with 30m of 25mm hose - complete with adjustable nozzle and hose reel lock
- Suction hose with non return foot valve

### TRAILED FIRE FIGHTING UNITS



Code	Description (mm)	Retail Pricing (Inc. GST)
FF600T	600 Ltr Single Axle Fire Fighting Trailer Unit	\$12,960.20
FF800T	800 Ltr Single Axle Fire Fighting Trailer Unit	\$13,255.00
FF1000T	1,000 Ltr Single Axle Fire Fighting Trailer Unit	\$13,392.50
FF1000TT	1,000 Ltr Tandem Axle Fire Fighting Trailer Unit	\$16,110.60
FF1500TT	1,500 Ltr Tandem Axle Fire Fighting Trailer Unit	\$16,797.00
FF2000TT	2,000 Ltr Tandem Axle Fire Fighting Trailer Unit	\$17,644.00
FF3000TT	3,000 Ltr Tandem Axle Fire Fighting Trailer Unit	\$20,233.40

Disclaimer: The images shown are for illustration purposes only and may not be an exact representation of the product. Actual product dimensions may vary slightly due to polyethylene shrinkage.



# FIRE FIGHTING EQUIPMENT


Trailed Fire Fighter Units

## TRAILED FIRE FIGHTING EQUIPMENT ACCESSORIES

Code	Description (mm)	Retail Pricing (Inc. GST)
MT-SW	Spare Wheel and Carrier	\$695.20
MT-TB	Heavy Duty Poly Tool Box	\$915.20

## BRAKE SYSTEMS

Code	Description (mm)	Retail Pricing (Inc. GST)
MT-SAMB	Single Axle Mechanical Override Brakes (Can Be Licensed To 1,500kgs)	\$821.70
MT-TAMB	Tandem Axle Mechanical Override Brakes (Can Be Licensed To 2,000kgs)	\$821.70
MT-TAEB	Tandem Axle Electric Brakes (Can Be Licensed To 3,000kgs)	\$3,203.20

 3,000L trailer is only available either unbraked or with electric brakes (mechanical brakes are not an option)

## LICENSING REQUIREMENTS

Code	Description (mm)	Retail Pricing (Inc. GST)
MT-LI	License Inspection (Includes Paperwork Ready For Registration)	\$618.20
MT-ILK	Indicator Lamp Kit	\$634.70

Disclaimer: The images shown are for illustration purposes only and may not be an exact representation of the product. Actual product dimensions may vary slightly due to polyethylene shrinkage.

# FIRE FIGHTING EQUIPMENT

## Hose Reels

### Features

- Hot dipped galvanised steel frame and base
- Compact design for smooth operation
- Simple winding mechanism
- Strong locking mechanism to prevent accidental unwinding
- High-quality nose and nozzle

## HOSE REELS



### FRX25

CODE

Fire Hose Reel | Excluding Hose  
To Suit 25mm Hose

 **\$597.30** Inc. GST



### FR25

CODE

Fire Hose Reel  
25mm Hose at 30 Meters

 **\$820.60** Inc. GST

# DIESEL PRODUCTS

Superior Diesel Storage & Transport Products Across All Industries.

Keep your operations running with safe, reliable, and efficient diesel storage and transport products.



## Key Features

- Manufactured in guidance to Australian Standards
- One-piece construction
- High-quality diesel grade material
- Storage tanks with dispensing stations
- Range of sizes and models available



UV Stabilised



Formulated for Diesel Use



Made of Specialised Grade Polyethylene



# DIESEL PRODUCTS

## Diesel Storage Tanks

### Features

- Complies to Australian Standards AS1940:2017 with an approved bund
- High quality diesel grade material
- UV resistant for Australian conditions
- Easy to install and easy to relocate if required
- 50mm anti-splash and anti-static fill line with non-return valve
- 50mm low level outlet with lockable ball valve tap and camlock
- Level gauge for easy viewing of content volume
- Earth strap and rod

## DIESEL STORAGE TANKS



### DDS5000

CODE

Capacity 5,000 Litres | Diameter 1800mm  
Height 2275mm | Excludes Pump

**\$5,273.40** Inc. GST



### DDS10000

CODE

Capacity 10,000 Litres | Diameter 2450mm  
Height 2450mm | Excludes Pump

**\$6,409.70** Inc. GST

### Features

- Quality Italian made pumps (12 and 240 volt options)
- Lockable pump cabinet to secure pump and nozzle
- 25mm auto shut-off nozzle
- 4 digit flow meter
- Filter with 10 micron nominal rating and pressure gauge

## DIESEL DISPENSING PUMPS AND ACCESSORIES



Code	Description (mm)	Retail Pricing (Inc. GST)
DDS12V60PK	12V 60LPM Diesel Pump, 6m hose & 25mm auto shut off nozzle	<b>\$4,173.40</b>
DDS240V80PK	240V 80LPM Diesel Pump, 6m hose & 25mm auto shut off nozzle	<b>\$4,351.60</b>
DDS240V100PK	240V 100LPM Diesel Pump, 6m hose & 25mm auto shut off nozzle	<b>\$4,496.80</b>

Please note that 240 Volt Pumps must be hard wired in by a qualified electrician.

Disclaimer: The images shown are for illustration purposes only and may not be an exact representation of the product. Actual product dimensions may vary slightly due to polyethylene shrinkage.

# DIESEL PRODUCTS

## Trailed Diesel Transport Equipment

### Features

- Purpose built for easy operation and smooth towing
- Landcruiser stud pattern hubs with spring suspension
- Durable tank manufactured with a specialised grade polyethylene formulated for use in diesel tanks
- 40mm diesel transfer pump coupled to Honda GX200 petrol recoil start engine
- 25mm auto rewind hose reel
- 25mm auto shut-off nozzle
- Sight tube for easy view of content volume
- Galvanised chassis frame
- Custom mudflaps
- Heavy duty pivot jockey wheel
- UV stabilised for long life

### TRAILED DIESEL TRANSPORT EQUIPMENT



Code	Description (mm)	Retail Pricing (Inc. GST)
DT600T	600 Ltr Single Axle Diesel Trailer Unit	\$17,845.30
DT800T	800 Ltr Single Axle Diesel Trailer Unit	\$18,114.80
DT1000T	1,000 Ltr Single Axle Diesel Trailer Unit	\$18,287.50
DT1000TT	1,000 Ltr Tandem Axle Diesel Trailer Unit	\$21,035.30
DT1500TT	1,500 Ltr Tandem Axle Diesel Trailer Unit	\$21,643.60
DT2000TT	2,000 Ltr Tandem Axle Diesel Trailer Unit	\$22,524.70
DT3000TT	3,000 Ltr Tandem Axle Diesel Trailer Unit	\$25,153.70

Disclaimer: The images shown are for illustration purposes only and may not be an exact representation of the product. Actual product dimensions may vary slightly due to polyethylene shrinkage.

# DIESEL PRODUCTS


Trailed Diesel Transport Equipment

## TRAILED DIESEL TRANSPORT EQUIPMENT ACCESSORIES

Code	Description (mm)	Retail Pricing (Inc. GST)
MT-SW	Spare Wheel and Carrier	\$695.20
MT-TB	Heavy Duty Poly Tool Box	\$915.20

## BRAKE SYSTEMS

Code	Description (mm)	Retail Pricing (Inc. GST)
MT-SAMB	Single Axle Mechanical Override Brakes (Can Be Licensed To 1,500kgs)	\$821.70
MT-TAMB	Tandem Axle Mechanical Override Brakes (Can Be Licensed To 2,000kgs)	\$821.70
MT-TAEB	Tandem Axle Electric Brakes (Can Be Licensed To 3,000kgs)	\$3,203.20

 3,000L trailer is only available either unbraked or with electric brakes (mechanical brakes are not an option)

## LICENSING REQUIREMENTS

Code	Description (mm)	Retail Pricing (Inc. GST)
MT-LI	License Inspection (Includes Paperwork Ready For Registration)	\$618.20
MT-ILK	Indicator Lamp Kit	\$634.70



# DIESEL PRODUCTS

Free Standing Diesel Transport Equipment

### Features

- Integral foam filled baffle to reduce surge and increase stability §
- Flat based to allow transport flexibility
- Special grade polyethylene for diesel - coloured to denote "Diesel Only"
- UV stabilised for long outdoor life
- Mounting pins supplied as standard
- Optional Ball Baffle System® available
- All models available with forkliftable galvanised mounting skid
- 2" filler hole with cap, 2" drum pump access fitting and splash resistant vent
- Calibrated for easy checking of content volume with sight tube†

## FREE STANDING DIESEL TRANSPORT TANKS



Code	Description (mm)	Length (mm)	Width (mm)	Height (mm)	Retail Pricing (Inc. GST)
DT400FS	400 Ltr Free Standing Diesel Transport Tank	1250	850	650	<b>\$1,052.70</b>
DT600FS	600 Ltr Free Standing Diesel Transport Tank	1300	980	710	<b>\$1,208.90</b>
DT800FS	800 Ltr Free Standing Diesel Transport Tank	1370	1100	860	<b>\$1,527.90</b>
DT1000FS	1,000 Ltr Free Standing Diesel Transport Tank	1355	1210	960	<b>\$1,683.00</b>
DT1500FS	1,500 Ltr Free Standing Diesel Transport Tank	1750	1250	1045	<b>\$2,247.30</b>
DT2000FS	2,000 Ltr Free Standing Diesel Transport Tank	1830	1400	1130	<b>\$2,962.30</b>
DT3000FS	3,000 Ltr Free Standing Diesel Transport Tank - Non Baffled	2365	1460	1300	<b>\$4,332.90</b>
DT5000FS	5,000 Ltr Free Standing Diesel Transport Tank - Non Baffled	2425	1830	1708	<b>\$6,152.30</b>
DT7000FS	7,000 Ltr Free Standing Diesel Transport Tank	3430	1850	1670	<b>\$8,364.40</b>
DT10000FS	10,000 Ltr Free Standing Diesel Transport Tank	3600	2100	1890	<b>\$12,360.70</b>
DT12500FS	12,500 Ltr Free Standing Diesel Transport Tank - Non Baffled	4000	2200	2085	<b>\$15,525.40</b>
DT17000FS	17,000 Ltr Free Standing Diesel Transport Tank - Non Baffled	4450	2300	2350	<b>\$21,305.90</b>

§ Except 3000 & 5000ltr Models

† Calibrations and sight tube readings should be taken as an approximate measure of volume only.

Disclaimer: The images shown are for illustration purposes only and may not be an exact representation of the product. Actual product dimensions may vary slightly due to polyethylene shrinkage.

# DIESEL PRODUCTS

## Free Standing Diesel Transport Equipment



## FREE STANDING DIESEL TRANSPORT TANK SKID FRAMES

Code	Description (mm)	Retail Pricing (Inc. GST)
SKD-FS-400	Duragalv Skid Frame To Suit 400L Free Standing Cartage Tank	\$1,238.60
SKD-FS-600	Duragalv Skid Frame To Suit 600L Free Standing Cartage Tank	\$1,266.10
SKD-FS-800	Duragalv Skid Frame To Suit 800L Free Standing Cartage Tank	\$1,447.60
SKD-FS-1000	Duragalv Skid Frame To Suit 1000L Free Standing Cartage Tank	\$1,452.00
SKD-FS-1500	Duragalv Skid Frame To Suit 1500L Free Standing Cartage Tank	\$1,775.40
SKD-FS-2000	Duragalv Skid Frame To Suit 2000L Free Standing Cartage Tank - Fork Accessible	\$2,228.60
SKD-FS-3000	Duragalv Skid Frame To Suit 3000L Free Standing Cartage Tank - Fork Accessible	\$3,014.00
SKD-FS-5000	Duragalv Skid Frame To Suit 5000L Free Standing Cartage Tank - Fork Accessible	\$3,781.80
SKD-FS-7000	Duragalv Skid Frame To Suit 7000L Free Standing Cartage Tank - Fork Accessible	\$5,501.10
SKD-FS-10000	Duragalv Skid Frame To Suit 10000L Free Standing Cartage Tank - Fork Accessible	\$5,724.40
SKD-FS-12500	Duragalv Skid Frame To Suit 12500L Free Standing Cartage Tank - Fork Accessible	\$6,604.40
SKD-FS-17000	Duragalv Skid Frame To Suit 17000L Free Standing Cartage Tank - Fork Accessible	\$7,070.80

Disclaimer: The images shown are for illustration purposes only and may not be an exact representation of the product.

# DIESEL PRODUCTS

## Diesel Transport Units

### Features

- Durable UV stabilised polyethylene tank with specialised grade polyethylene suitable for diesel
- Baffle Ball System for improved load stability
- Galvanised steel frame with fork access and platform for pumping equipment and plumbing
- 40mm cast iron diesel transfer pump coupled to Honda GX200 petrol recoil start engine
- 32mm filter with pressure gauge
- 25mm auto rewind hose reel (with 15m of hose)
- 25mm auto shut-off nozzle and nozzle holder
- 50mm fill line (independent of pump) including non-return valve
- Sight tube for easy view of content volume
- Ability to fill tank through pump

### DIESEL TRANSPORT UNITS



Code	Description (mm)	Length (mm)	Width (mm)	Height (mm)	Retail Pricing (Inc. GST)
DTU2000	2,000L Diesel Transport Unit	2795	1400	1230	\$15,373.60
DTU3000	3,000L Diesel Transport Unit	3220	1538	1450	\$17,624.20
DTU5000	5,000L Diesel Transport Unit	3180	1836	1858	\$21,287.20
DTU7000	7,000L Diesel Transport Unit	4240	1850	1820	\$25,240.60
DTU10000	10,000L Diesel Transport Unit	4420	2110	2150	\$31,114.60
DTU12500	12,500L Diesel Transport Unit	4555	2200	2235	\$35,736.80
DTU17000	17,000L Diesel Transport Unit	5485	2345	2500	\$43,522.60

### DIESEL TRANSPORT UNIT ACCESSORIES

Code	Description (mm)	Retail Pricing (Inc. GST)
MT-DHA40-U	40mm Auto Rewind Hose Reel - Upgrade from 25mm	\$2,783.00
MT-ASN40-U	40mm Auto Shut-Off Nozzle - Upgrade From 25mm	\$607.20
MT-FM40	40mm BSP Port 4 Digit Flow Meter	\$3,086.60
MT-FM4	25mm BSP Port 4 Digit Flow Meter	\$314.60

Disclaimer: The images shown are for illustration purposes only and may not be an exact representation of the product. Actual product dimensions may vary slightly due to polyethylene shrinkage.



# DIESEL PRODUCTS

## Diesel Transfer Accessories

### Features

- Diesel Pump Kits for refuelling operations from drums, tanks or mobile refuelling carts
- Robust proven pump kits for diesel refuelling operations
- Designed to give effortless refuelling for agricultural operations

## DIESEL TRANSFER ACCESSORIES

Code	Description	Retail Pricing (Inc. GST)
MT-12A45K	12 Volt Pump Kit With Auto Shut-Off Nozzle - 45Lpm	\$811.80
MT-12A60K	12 Volt Pump Kit With Auto Shut-Off Nozzle - 60Lpm	\$993.30
MT-12AHF	12 Volt Hi-Flo Pump Kit With Auto Shut-Off Nozzle - 85Lpm	\$1,414.60
MT-FM4	25mm BSP Port 4 Digit Flow Meter, Manual	\$314.60
MT-FMD	25mm BSP Electronic Inline Digital Flow Meter For Diesel	\$503.80
MT-FM40	40mm BSP Port 4 Digit Flow Meter, Manual	\$3,086.60
MT-DHA25	25mm Auto Rewind Diesel Hosereel	\$1,793.00
MT-DHA40	40mm Auto Rewind Diesel Hose Reel	\$4,796.00
MT-ASN25	25mm Auto Shut-Off Nozzle	\$390.50
MT-ASN40	40mm Auto Shut-Off Nozzle	\$883.30
MT-DF	1 ¼ Inch Diesel Filter with Gauge	\$387.20
MT-DF10	1 Inch 10 Micron Fuel Filter	\$248.60
MT-MSN40	1 ½ Manual Shut-off Nozzle	\$419.10



- 45L/min open flow
- 4 metres of 20mm anti-static delivery hose with anti-kink spring + auto shut-off nozzle
- 4 metres of power cable
- 2 metres of 20mm suction hose
- On/off switch on pump



- 60L/min open flow
- 4 metres of 25mm anti-static delivery hose with anti-kink spring + auto shut-off nozzle
- 4 metres of power cable
- 2 metres of 25mm suction hose
- Easy clean suction strainer



- 85 L/min open flow
- 12 volt DC/35 amp pump
- 4 metre battery cable with alligator clips
- Easy to use volumetric self priming
- 1" BSP female ports
- 4 metres of 25mm diesel delivery hose
- Auto shutoff nozzle with swivel



- 1" BSP electronic inline turbine meter with compact display ideal for fitting at fuel nozzles. Flow range 10-120 LPM maximum, working pressure 300 PSI. accuracy ± 1%.



- Hose reel with 15m x 25mm hose. 1" BSP inlet/outlet. air/water/diesel.
- 300 PSI working pressure.



- 1" BSP port 4 digit flow meter with flow range from 20 - 120 LPM
- 4 digit resettable totaliser. 8 digit non resettable cumulative total.
- For use with diesel fuel in pump or gravity applications.



- 1" BSP port
- Auto shut-off

Disclaimer: The images shown are for illustration purposes only and may not be an exact representation of the product.

# SEPTIC SYSTEMS

Beat the Old - Coerco's Premium Septic Systems are Conveniently the Best.

Designed by Rural Aussies with decades of experience, the Coerco septic tank systems provide convenience. From delivery, to installation and to performance, our poly septic tank & leach drain systems are no-nonsense and easy to use. You can't find a better septic system at an affordable cost without compromising on quality!



## Key Features

- Manufactured to meet Department of Health approvals: Western Australia, Northern Territory, and South Australia
- Certified to AS1546.1 for a range of septic and wastewater products
- Variety of sizes to suit your requirements



Lightweight, easy to install and use



Manufactured from durable polyethylene

Disclaimer: The images shown are for illustration purposes only and may not be an exact representation of the product.



# SEPTIC SYSTEMS

Septic Tanks



## SEPTIC TANKS

### Features

- Lightweight, easy to transport and install
- Manufactured from durable polyethylene
- Anti floatation ring and ribbing incorporated into design
- Certified to Australian Standard AS/NZS1546.1 and approved by Department of Health - WA
- Supplied as complete kit including lid, inlet and outlet 'T' pieces
- Leach drain systems also available (Refer to page 57)



### SEP-1450

CODE

Capacity 1,450 Litres | Diameter 1250mm  
Height 1500mm

**\$1,101.10** Inc. GST



### SEP-2200

CODE

Capacity 2,200 Litres | Diameter 1540mm  
Height 1500mm

**\$1,150.60** Inc. GST



### SEP-3200

CODE

Capacity 3,200 Litres | Diameter 2150mm  
Height 1745mm

**\$2,183.50** Inc. GST



### SEP-4000

CODE

Capacity 4,000 Litres | Diameter 2200mm  
Height 1770mm

**\$2,486.00** Inc. GST

## SEPTIC TANK ACCESSORIES

Code	Description (mm)	Retail Pricing (Inc. GST)
EFD-100	100mm Effluent Diverter	<b>\$210.10</b>



NOTE: Septic tank colour may vary depending on the recycled material used.  
Disclaimer: The images shown are for illustration purposes only and may not be an exact representation of the product.  
Actual product dimensions may vary slightly due to polyethylene shrinkage.



# SEPTIC SYSTEMS

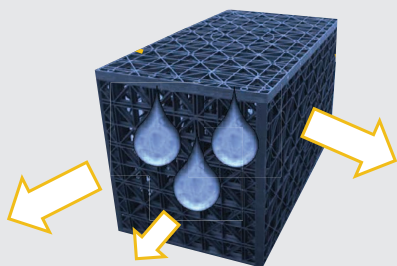
## Leach Drain System

### Features

- Made from 100% recycled material
- Light weight
- Modular
- 95% void area
- Strong
- Service temperature from -20°C – 120°C
- Polypropylene
- Flat pack form

### Benefits

- Environmentally friendly
- Simple to install
- Easy to deliver
- Cost effective
- Chemically inert
- Not affected by mould or algae
- UV stabilised
- Water saving
- 100% recyclable



## LEACH DRAIN SYSTEM

Coerco's leach drain systems are design to integrate efficiently with our septic tank units although can be utilised in any waste water situation requirement that requires a leaching system.

Manufactured from strong light weight polypropylene, they are an easy to install, cost effective solution for effluent waste issues. They are flat packed for portable and efficient logistics. The systems are very flexible with a range of configurations for every individual requirement and designed to meet strict industry regulations and standards.

Code	Description	Retail Pricing (Inc. GST)
LD-04	Leach Drain - 4 Mtr (Includes Cells & Geocloth to suit)	\$412.50
LD-05	Leach Drain - 5 Mtr (Includes Cells & Geocloth to suit)	\$473.00
LD-06	Leach Drain - 6 Mtr (Includes Cells & Geocloth to suit)	\$530.20
LD-07	Leach Drain - 7 Mtr (Includes Cells & Geocloth to suit)	\$649.00
LD-08	Leach Drain - 8 Mtr (Includes Cells & Geocloth to suit)	\$709.50
LD-09	Leach Drain - 9 Mtr (Includes Cells & Geocloth to suit)	\$822.80
LD-10	Leach Drain - 10 Mtr (Includes Cells & Geocloth to suit)	\$882.20
LD-11	Leach Drain - 11 Mtr (Includes Cells & Geocloth to suit)	\$1,001.00
LD-12	Leach Drain - 12 Mtr (Includes Cells & Geocloth to suit)	\$1,059.30
LD-13	Leach Drain - 13 Mtr (Includes Cells & Geocloth to suit)	\$1,116.50
LD-14	Leach Drain - 14 Mtr (Includes Cells & Geocloth to suit)	\$1,234.20
LD-15	Leach Drain - 15 Mtr (Includes Cells & Geocloth to suit)	\$1,294.70
LD-16	Leach Drain - 16 Mtr (Includes Cells & Geocloth to suit)	\$1,413.50
LD-17	Leach Drain - 17 Mtr (Includes Cells & Geocloth to suit)	\$1,469.60
LD-18	Leach Drain - 18 Mtr (Includes Cells & Geocloth to suit)	\$1,587.30
LD-19	Leach Drain - 19 Mtr (Includes Cells & Geocloth to suit)	\$1,645.60
LD-20	Leach Drain - 20 Mtr (Includes Cells & Geocloth to suit)	\$1,763.30



## General Conditions

### Product Benefits

Coerco's products are manufactured from the highest food grade material conforming to Australian standards. These products are strong, lightweight, UV resistant and exceptionally durable.

### Product Specifications

All specifications are subject to change in line with on-going improvements.

### Pricing Includes GST

All prices specified include GST and are subject to change without notice.

### Product Design Protection

Many of Coerco products are subject of an Australian patent and pending design registration.

### Sizes

All sizes, measurements and capacities throughout this brochure are only approximate due to the variable shrinkage nature of polyethylene during manufacture.

### Placing Your Order

We have a diverse network of distributors throughout Western Australia. Contact your local Coerco agent or call us on 1800 646 277.

### Product Returns

All products returned for credit must be in "As New" condition and are subject to a 20% restocking fee and a return freight cost.

### Warranty

Coerco's products are guaranteed against faulty workmanship and carry a warranty. To see the full warranty details go to <https://agriculture.coerco.com.au/warranty>

### Minimum Orders

Any order under \$55 including GST is subject to a postage and handling fee of \$25.00 including GST.

### Disclaimer

All recommendations within this product catalogue are intended as suggestions only. Coerco does not take any responsibility for the suitability of any product for the use it is given. Product images are a close guide only and may not represent actual product.

### Trademarks & Copyright

© Coerco 2024. This publication is copyrighted to Coerco.

## Delivery Information

When purchasing a tank from Coerco, it is very important to you provide as much information about delivery as possible. Ideally, the Google Maps latitude and longitude coordinates are the best and most accurate way to tell us where you want your tank delivered.

### Other Options

Another option is a clearly defined instruction on a recent map or, as last preference, an address with well-outlined written drop-off instructions. A site contact phone number should also be provided.

### Clearance

Please note that Coerco's truck and trailer combinations require a minimum clearance of 20 metres long, 3.5 metres wide and 5 metres high.

Please be aware that it is the owner's responsibility to provide clear access to the site. Clear access on roads, lane ways, through gateways, crossings and trees is essential to ensure the safe delivery of your tank/s or other product/s without damage.

Large tanks can be delivered directly to a property where there is a properly made road and large turning area available. If a driver cannot reach the location, the tank/s will be left at the closest practical position.

### General guide for placement of tanks on tank pads

Placement of tanks above 9,500ltr on a pad requires customer assistance. The following is a general guide to follow (please note that this is a GUIDE ONLY; safe work practices and lifting techniques are to be followed at all times and are the responsibility of the client to observe):

- Tanks between 9,500ltr and 13,500ltr need three persons (not including our driver) to handle and manoeuvre into place.
- Tanks between 22,500ltr and 32,000ltr need four persons (not including our driver) to handle and manoeuvre into place.

Tanks above 50,000ltr are too heavy to safely manoeuvre by hand and require either a machine (telehandler, forklift or bobcat) to assist. Alternatively, our logistics team will arrange for the delivery and placement to be conducted with a Hiab equipped truck. This will be discussed and determined during the delivery scheduling call with the customer. Please be reminded that it is the customer's responsibility to ensure there is adequate assistance and/or resources available to safely unload your tank.

If you have any questions regarding your delivery, please give us a call on 1800 646 277 and speak with one of our friendly team members to discuss!

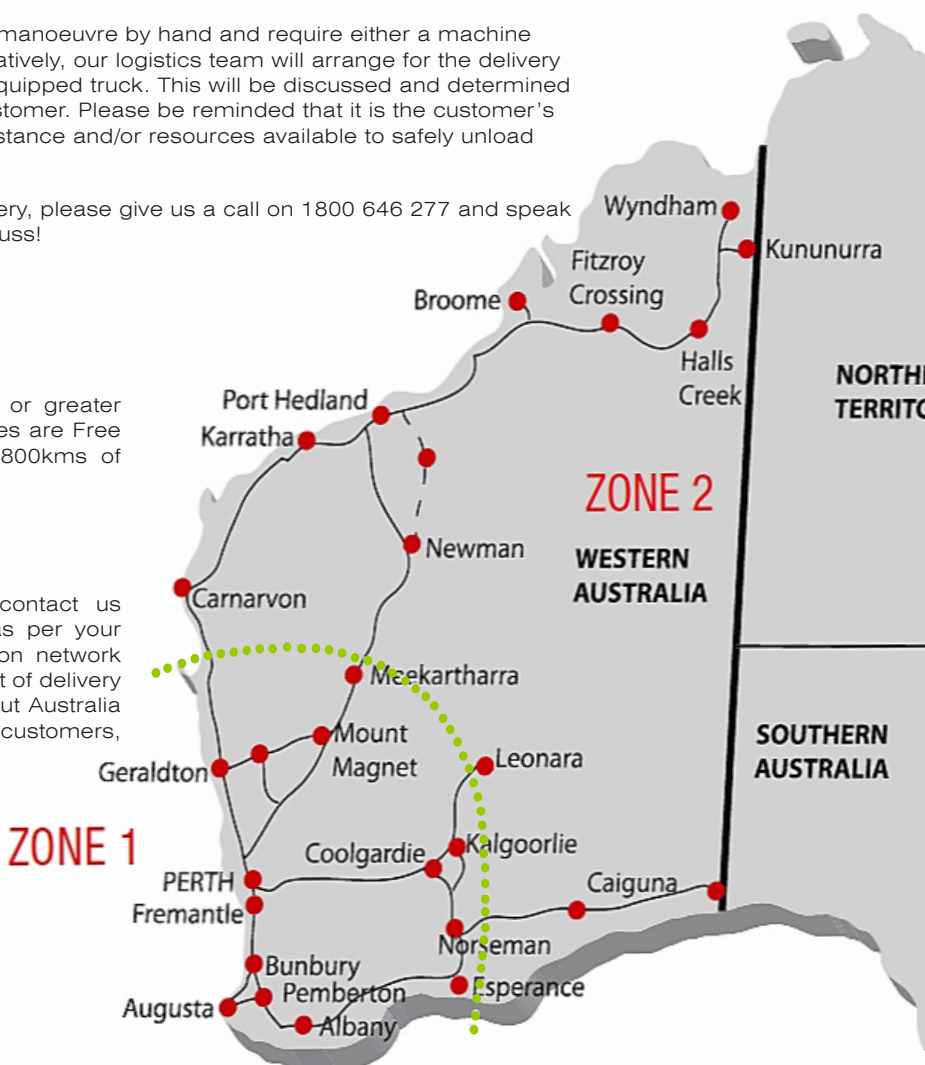
## Freight

### Zone 1:

Any product or product combination 9,000L or greater includes free delivery to site. All other deliveries are Free Into Store to your local distributor. \*Within 800kms of Perth, WA.

### Zone 2:

For locations outside of Zone 1, please contact us for a highly competitive quote for delivery as per your requirements. We have the largest distribution network throughout Western Australia and our own fleet of delivery vehicles with the capability to deliver throughout Australia and further afield. We deliver when it suits our customers, not according to anyone else's schedule.







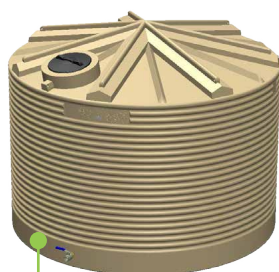
Email: [orders@coerco.com.au](mailto:orders@coerco.com.au)  
Website: [www.coerco.com.au](http://www.coerco.com.au)

Date		Tank No.	_____ of _____
Contact Name			
Product Code		Colour	
Delivery Address			
Phone			

\*Please fill out one sheet for each water tank you order.

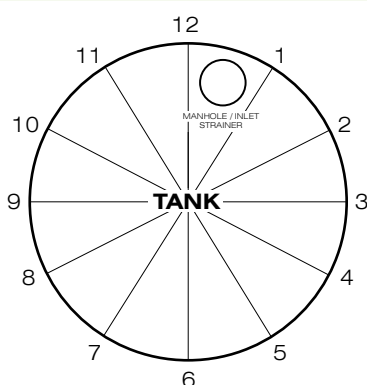
## Round Tanks

### Outlet



#### Outlet

Positioned slightly above the bottom of the tank side wall and is where you connect your tap for draining.

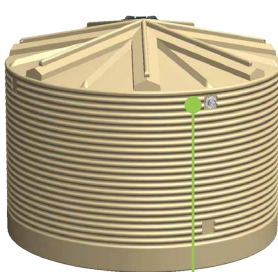


Please mark an **X** on the illustration below where you would like your outlet to be. **This can be positioned at any location from 1 to 12 o'clock.**

#### Choose outlet size:

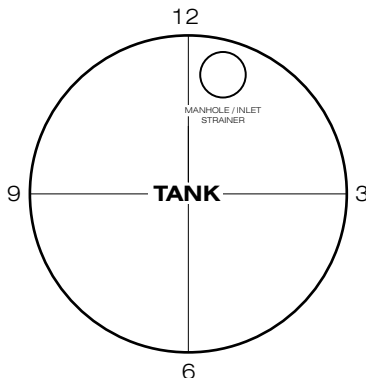
- ☐ 40mm (standard)
- ☐ 50mm
- ☐ 80mm (additional cost)
- ☐ 100mm (additional cost)

### 90mm PVC overflow



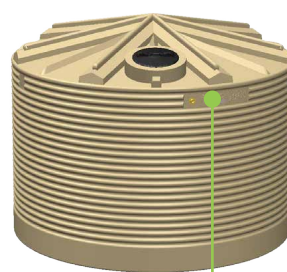
#### Overflow

Positioned at the top of the tank side wall and is designed to prevent the tank overflowing in an uncontrollable manner.



Please mark an **O** on the illustration below where you would like the overflow to be. **This can be positioned at 3, 6, 9, or 12 o'clock.**

### Threaded inlet (optional)



#### Threaded Inlet

Required only if you are pumping into the tank or filling from a bore. NOT when filling from a roof to collect rainwater.

We recommend this is fitted at 12 o'clock so it can be easily accessed through the manhole opening.

#### Choose inlet size:

- ☐ 25mm
- ☐ 32mm
- ☐ 40mm (standard)
- ☐ 50mm

### Additional Notes & General Comments:

---

---

---



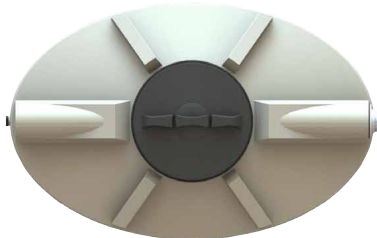
Email: [orders@coerco.com.au](mailto:orders@coerco.com.au)  
Website: [www.coerco.com.au](http://www.coerco.com.au)

Date		Tank No.	_____ of _____
Contact Name			
Product Code		Colour	
Delivery Address			
Phone			

\*Please fill out one sheet for each water tank you order.

### Lid & Leaf Strainer Position

**RTS800, RTS1500**

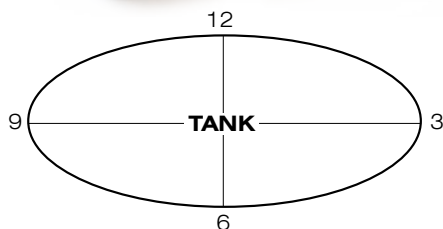
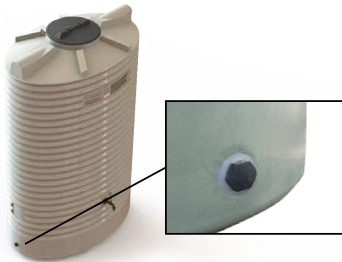


**RTS3000**



### Slimline Tanks

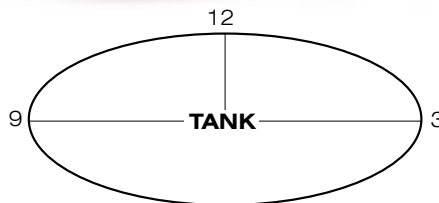
**25mm Drain Outlet**



Please mark **X** where you would like the drain outlet fitted.

This can be positioned at 3, 6, 9 or 12 o'clock

**Hi Tap**

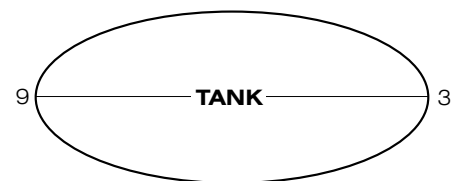


Please mark **X** where you would like the hi-tap fitted.

For the **RTS1500** & **RTS3000** this can be positioned at 3, 9 or 12 o'clock.

For the **RTS800** this can only be positioned at 12 o'clock

**90mm PVC Mesh Overflow**



Please mark **X** where you would like the overflow fitted.

This can be positioned at 3, or 9 o'clock

### Additional Notes & General Comments:

# Notes

[illegible]





coerco



# Get in touch today for a no obligation chat and free quotation.



1800 646 277



[info@coerco.com.au](mailto:info@coerco.com.au)



[coerco.com.au](http://coerco.com.au)



**coerco**

Coerco Pty Ltd  
ABN 54 145 356 565

**Dalwallinu Office**  
9 Huggett Drive  
Dalwallinu  
Western Australia, 6609

PO BOX 319 Dalwallinu  
Western Australia 6609

**Malaga Office**  
23 Harris Road  
Malaga  
Western Australia, 6090

Freecall 1800 646 277  
Phone 08 9661 0610  
Fax 08 9661 1515  
[info@coerco.com.au](mailto:info@coerco.com.au)  
[www.coerco.com.au](http://www.coerco.com.au)